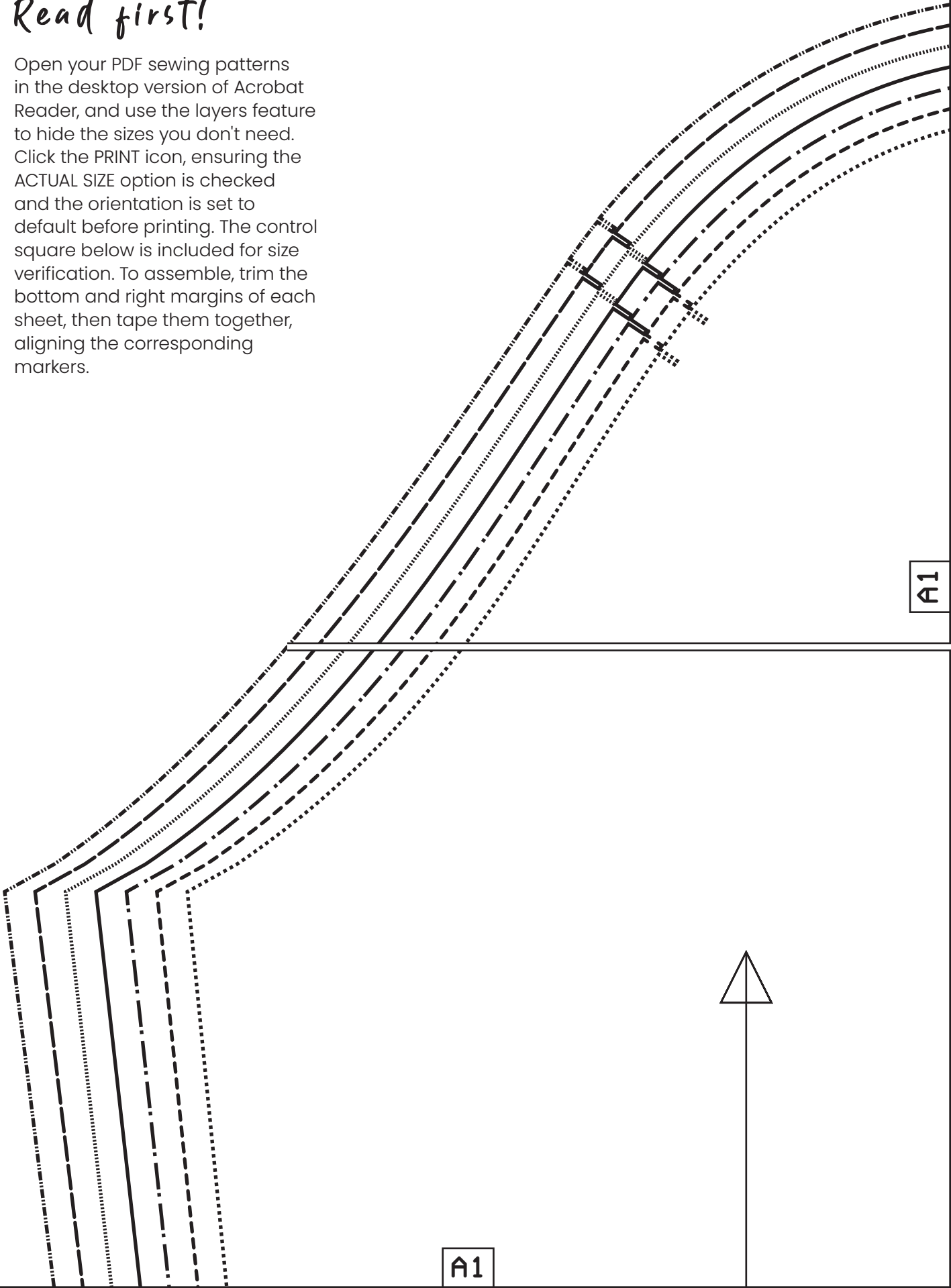


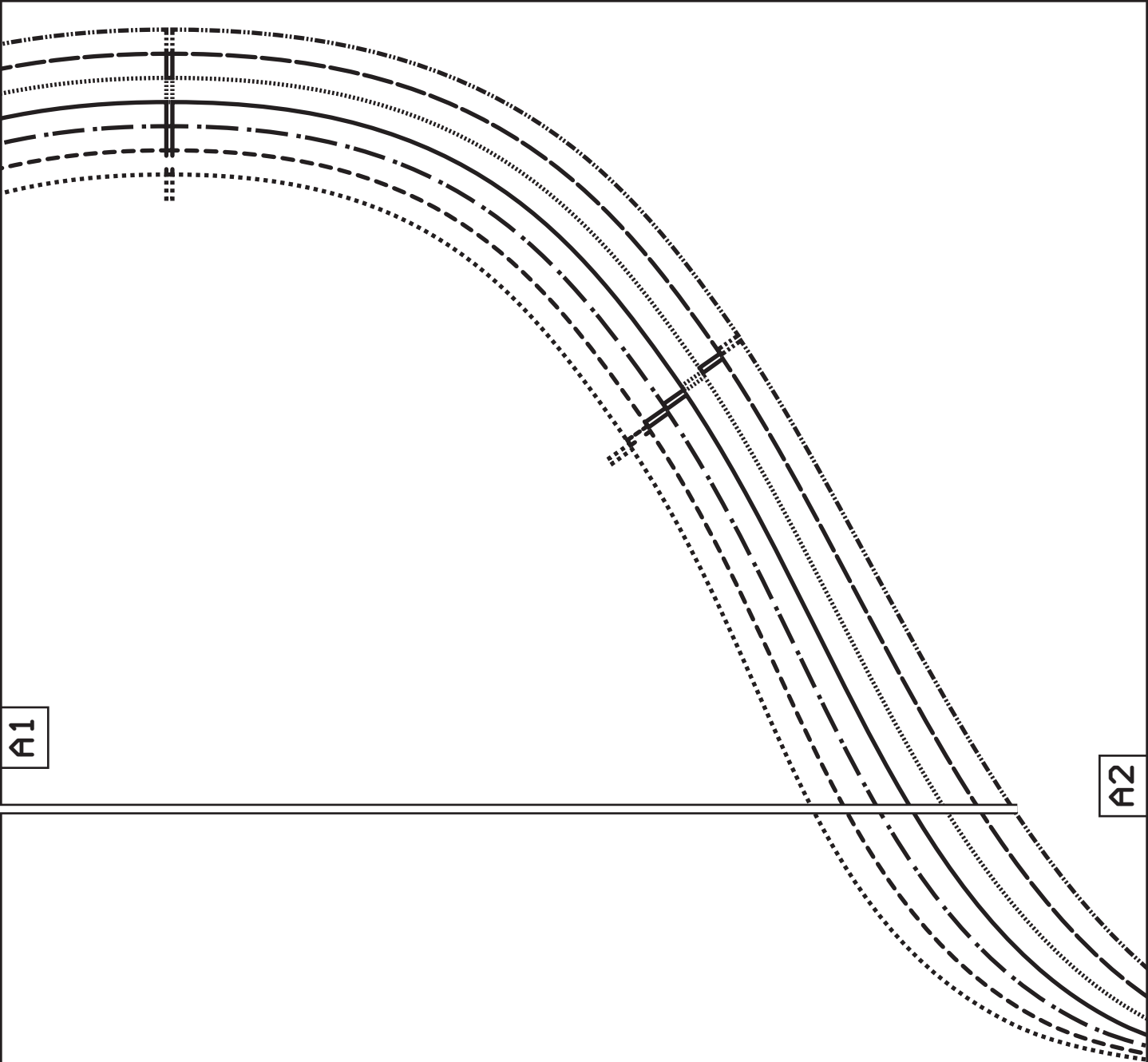
Read first!

Open your PDF sewing patterns in the desktop version of Acrobat Reader, and use the layers feature to hide the sizes you don't need. Click the PRINT icon, ensuring the ACTUAL SIZE option is checked and the orientation is set to default before printing. The control square below is included for size verification. To assemble, trim the bottom and right margins of each sheet, then tape them together, aligning the corresponding markers.



A1

A1



A1

A2

Find the **sewing instructions**, tips and sizing guide for this project by scanning the QR code with your smartphone.
OR
Go to **unfetteredpatterns.blog** and enter **UP1075** in the search bar.



SIZE KEY

A2

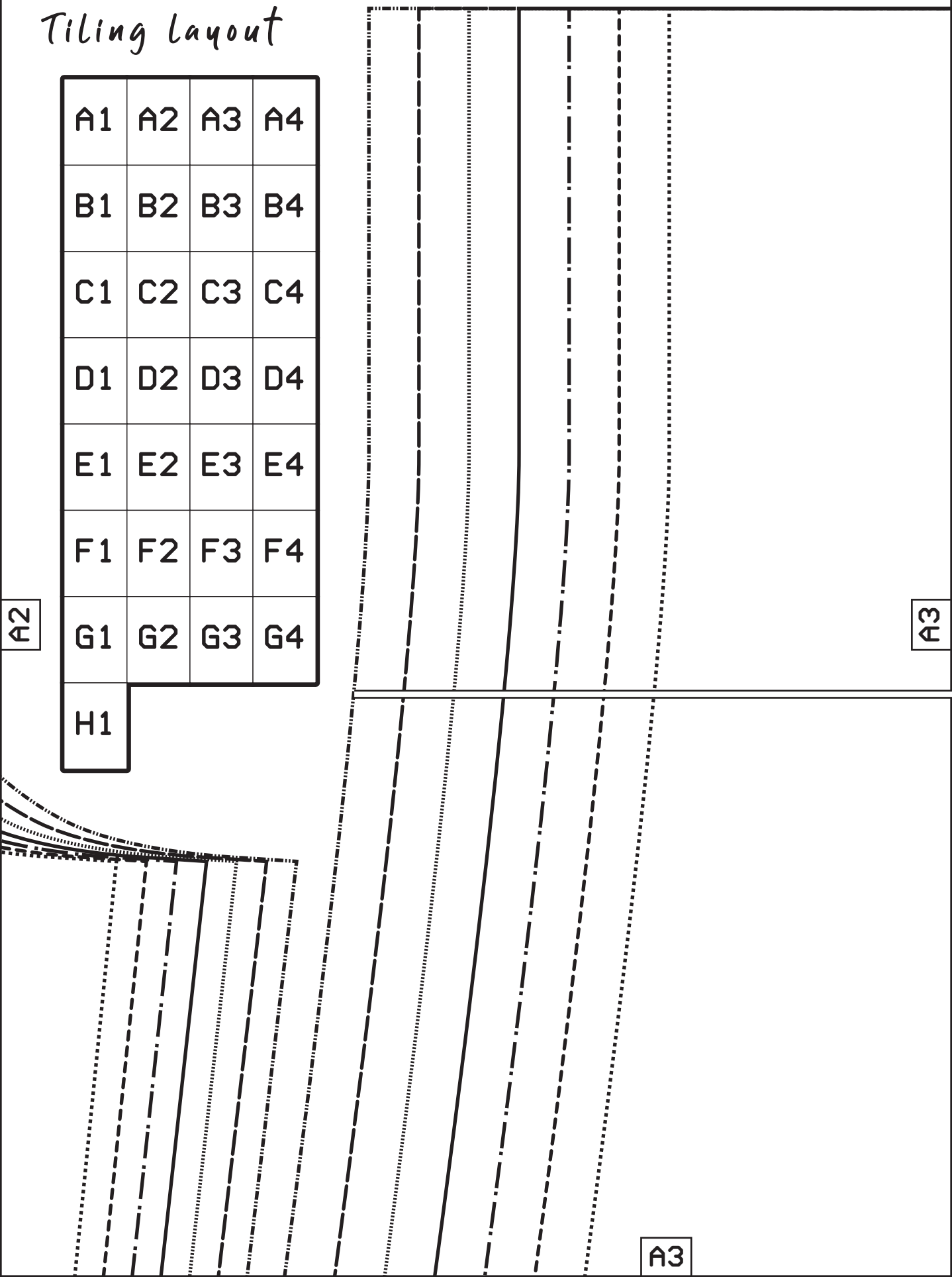
Tiling layout

A1	A2	A3	A4
B1	B2	B3	B4
C1	C2	C3	C4
D1	D2	D3	D4
E1	E2	E3	E4
F1	F2	F3	F4
G1	G2	G3	G4
H1			

A2

A3

A3



4 cm (1 1/2")

Hem allowance



A3



A4

Grainline

A2

XL

 L

 M/L

 M

 S/M

 S

 XS

B1

up

B2

infetteredpatterns.blog

Model #UP1075

Sizes XS-XL

Sleeve lining

Cut 2x lining

xxHem and seam allowances included!xx

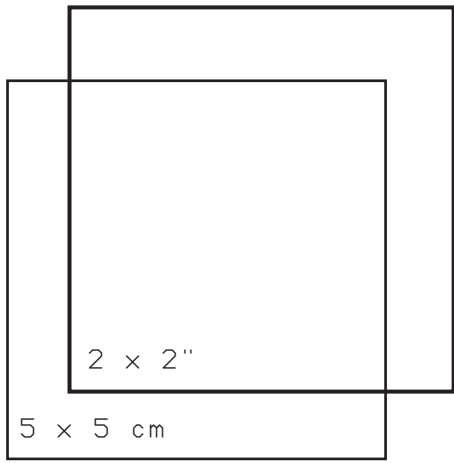
B2

A3

xx|pəp

B2

B3



© Unfettered Patterns 2025
 This is a free sewing pattern and
 resale or distribution is prohibited.

B3

B1

C1

C1

SIZE

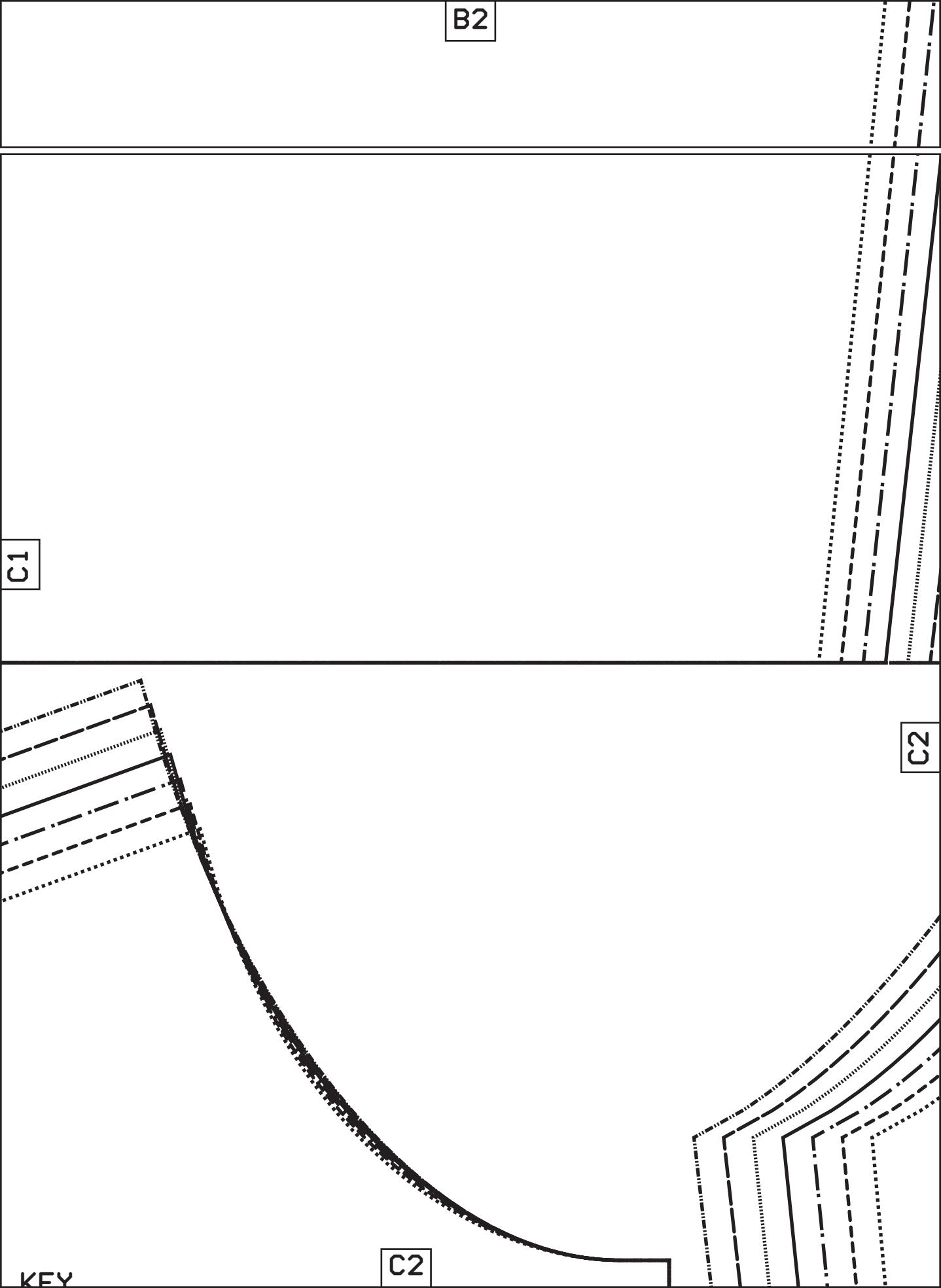
B2

C1

C2

C2

KEY

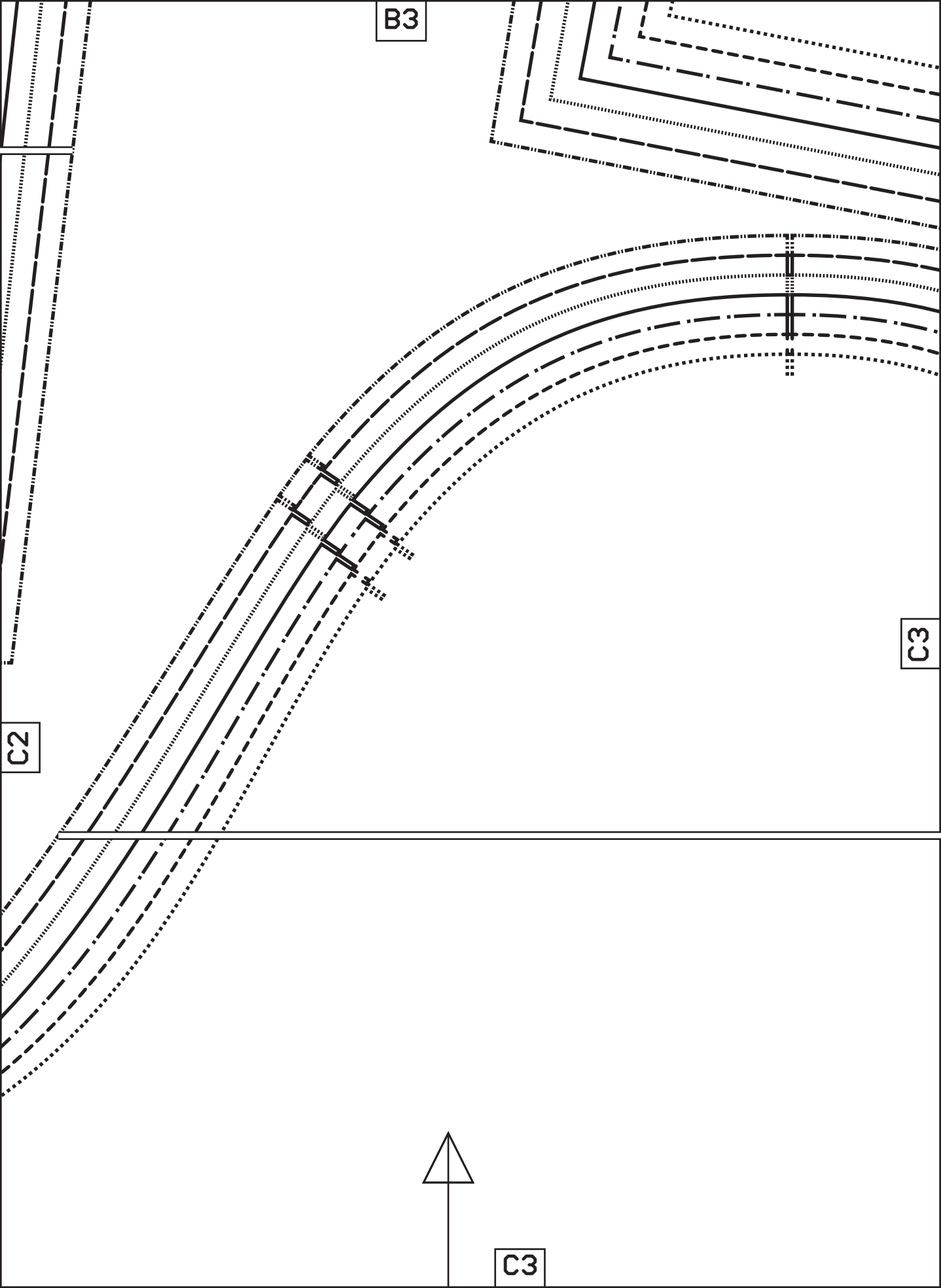


B3

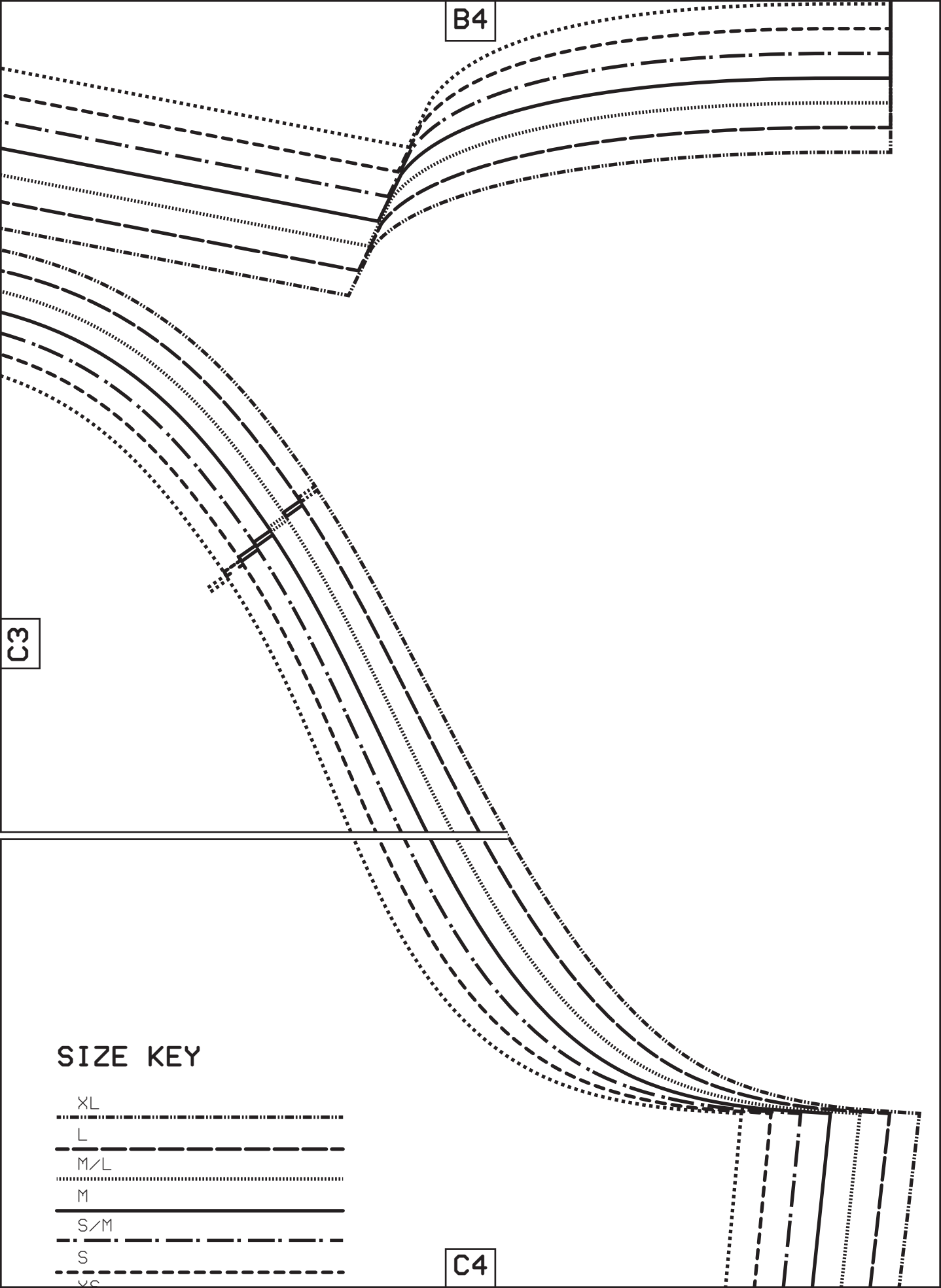
C3

C2

C3









B4



C3

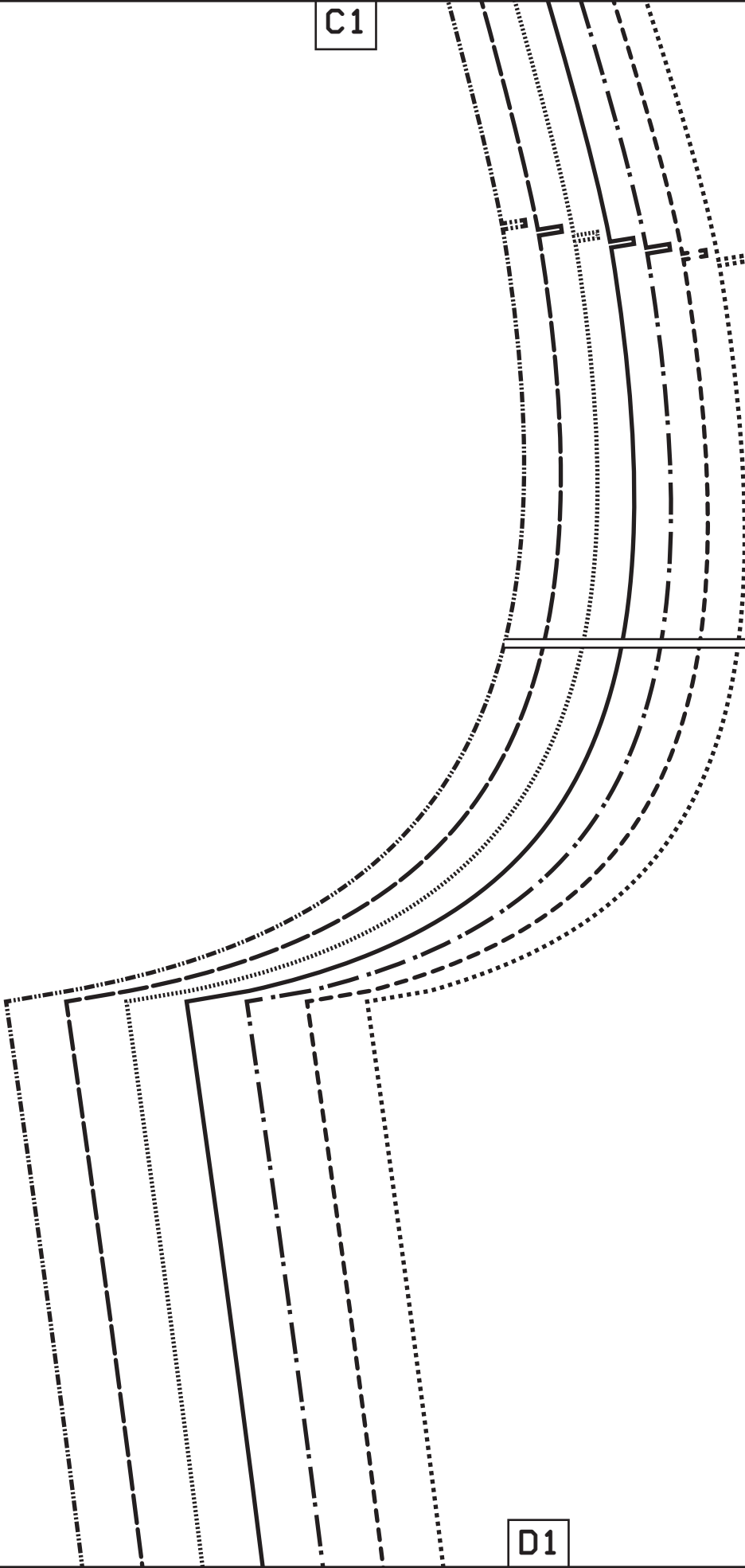
SIZE KEY

- XL 
- L 
- M/L 
- M 
- S/M 
- S 
- XS

C4

C1

- XL
- L
- M/L
- M
- S/M
- S
- XS



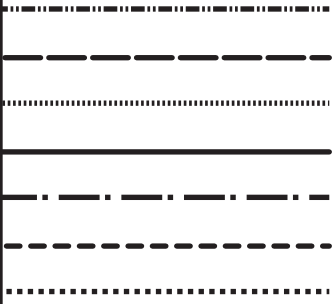
D1



D1

UP

C2



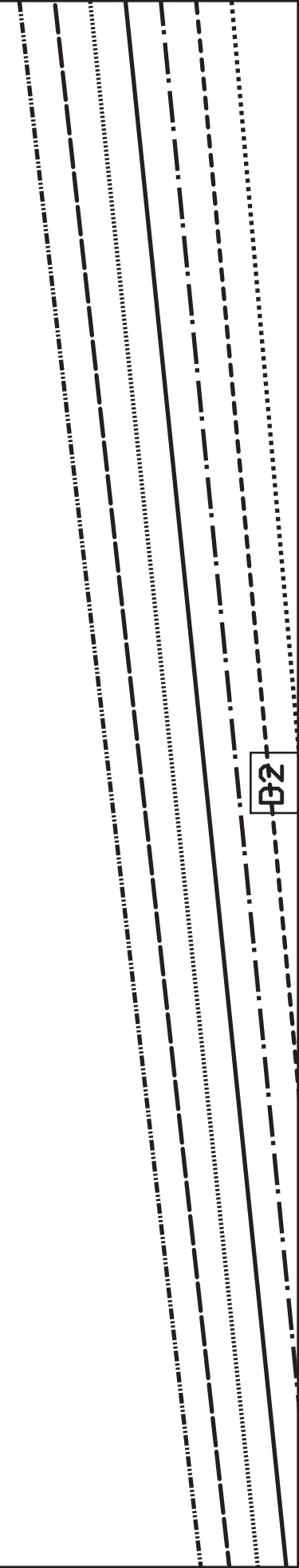
D1



nline

D2

D2



C3

D2

D3

Grainline



unfetteredpatterns.blog

Model #UP1075

Sizes XS-XL

Sleeve

Cut 2x fabric

****Hem and seam allowances**

D3

C4

PATTERN SYMBOLS

NOTCHES



ADJUSTMENT LINE



MARKING



BUTTON



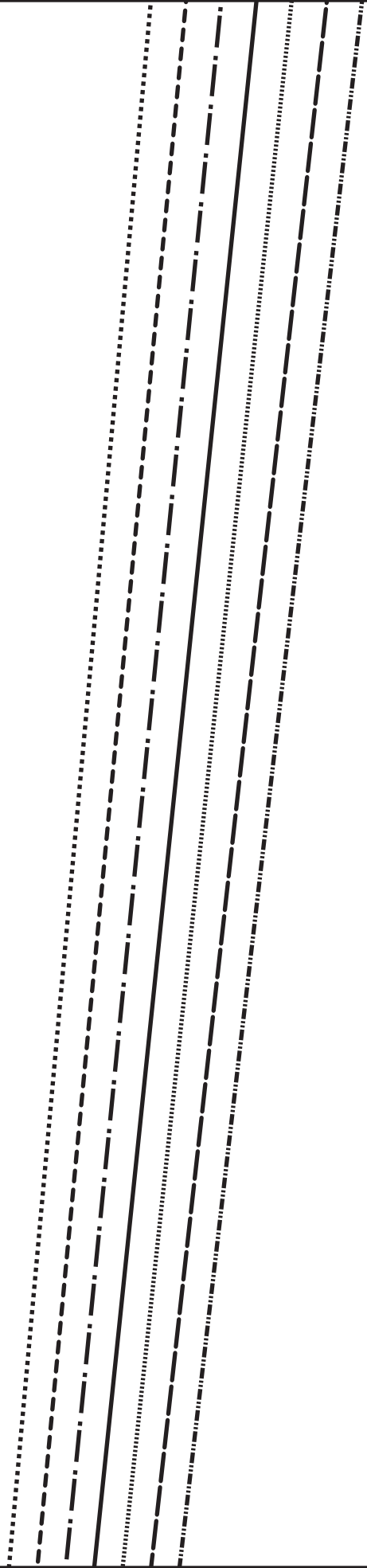
BUTTONHOLE



D3

Included!xx

D4



D1

unfetteredpa

Model #UP107

Sizes XS-XL

Front

Cut 2x fabric

**Hem and se



E1

Hem allowan

4 cm (1 1/2



E1

Patterns.blog

5

c

am allowances included!xx

Grā

D2



E1

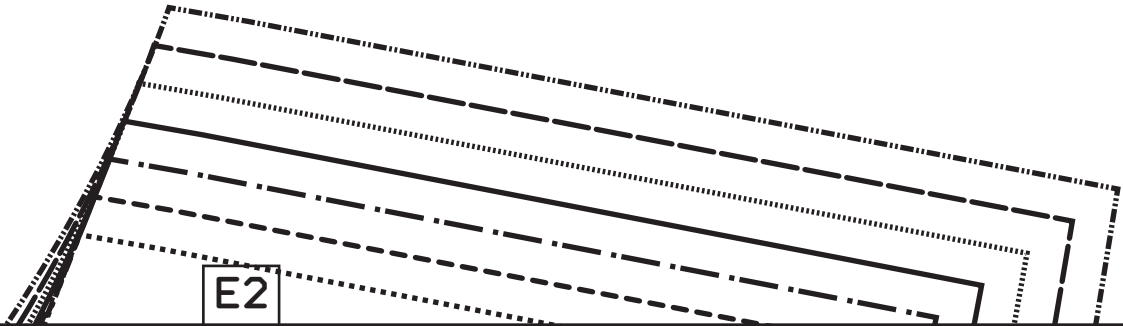
nce

2")



E2

E2



D3

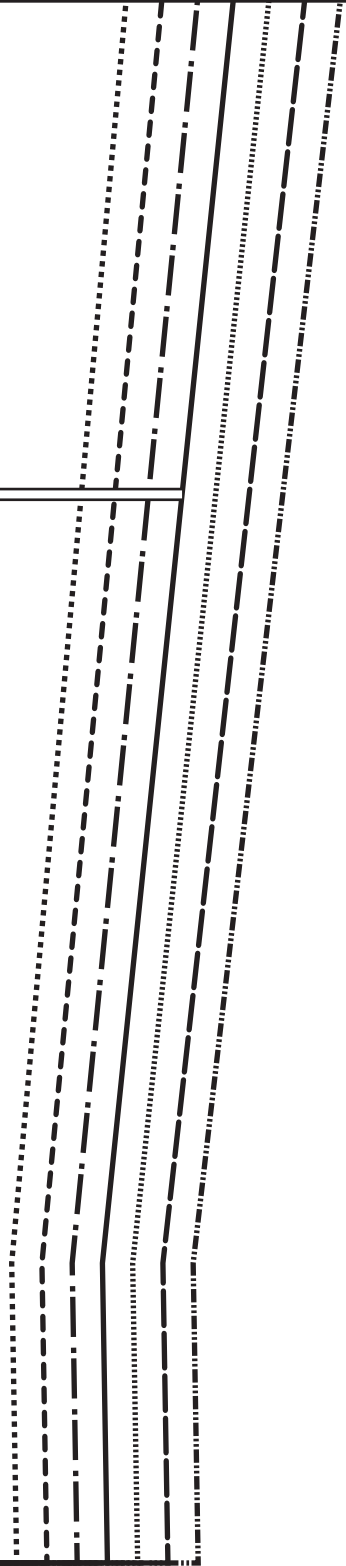
E2

E3

Hem a
4 cm

E3

D4



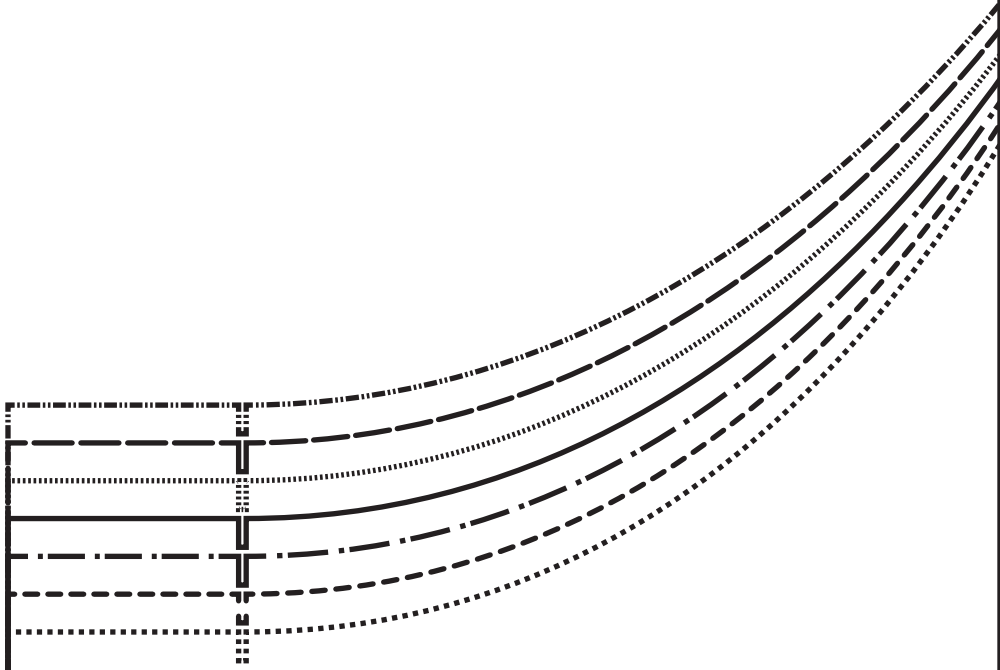
E3

Allowance
(1 1/2")

E4



E1



F1

Center back



unfettered
 Model #UP1
 Sizes XS-XL

Back lining
 Cut 2x lining

F1

E2

SIZE KEY

XL	-----
L	-----
M/L	-----
M	-----
S/M	-----
S	-----
XS	-----

F1

F2



fabric
e
ck

F2

E3

F2

F3

F3



Place this edge
on the fold of the
Center ba

unfettered

unfetteredpatterns.blog

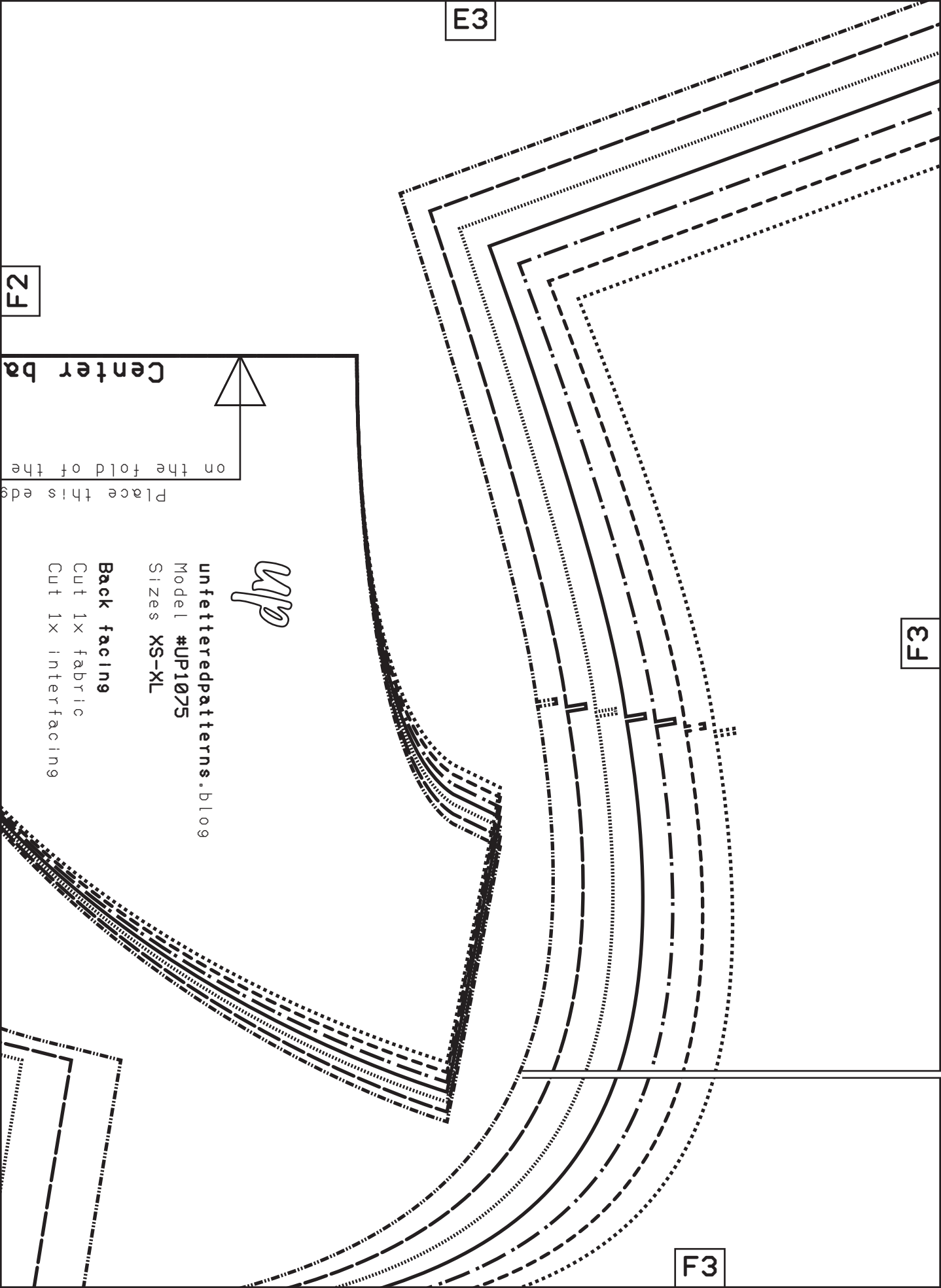
Model #UP1075

Sizes XS-XL

Back facing

Cut 1x fabric

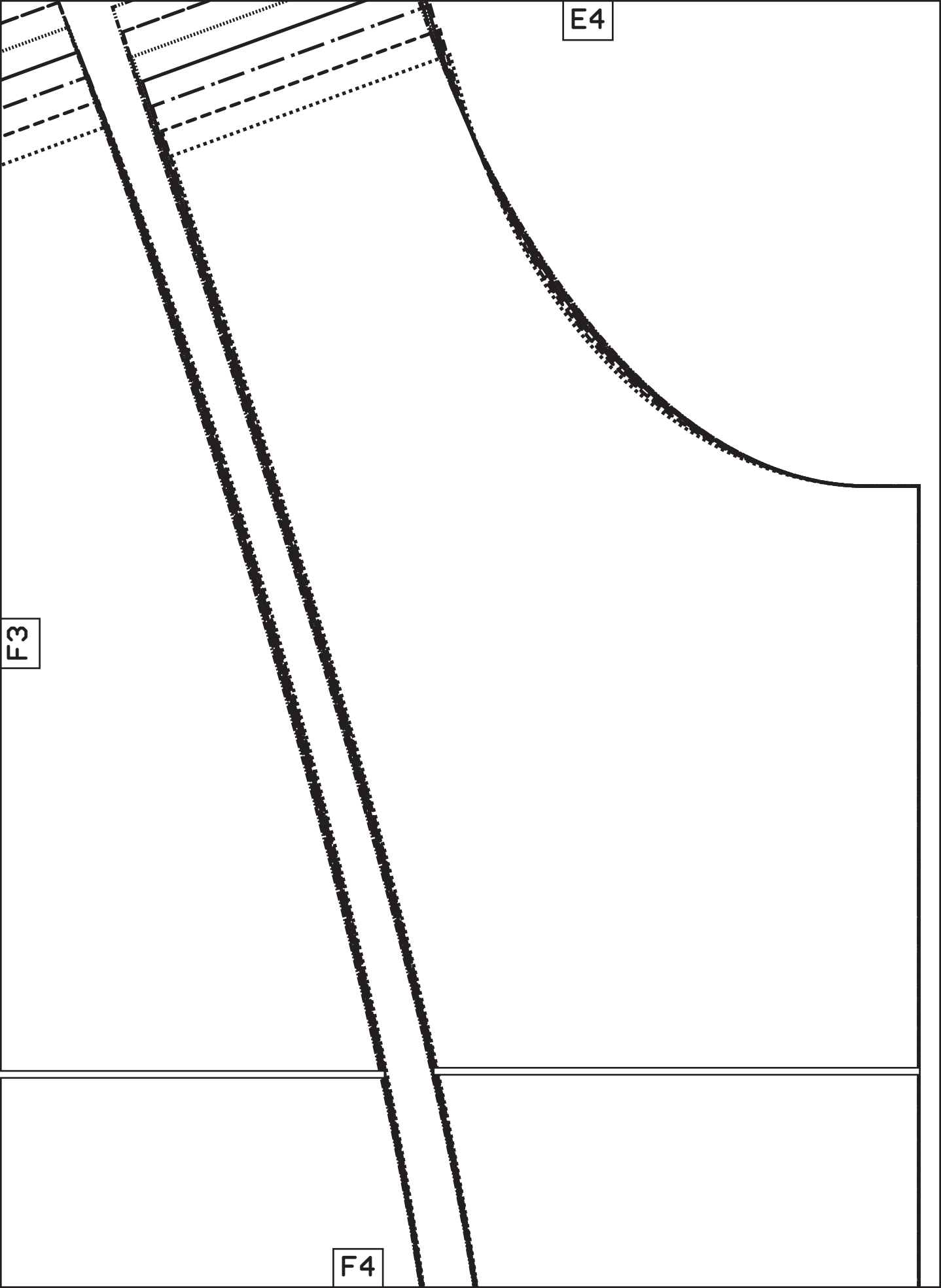
Cut 1x interfacing



E4

F3

F4



F1

Grainline

G1

up

unfetteredpatterns.blog

Model #UP1075

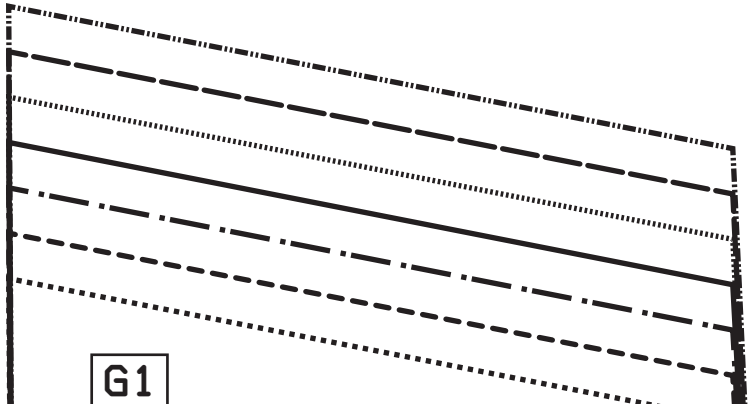
Sizes XS-XL

Zipper tab

Cut 1x fabric

Cut 1x interfacing

G1



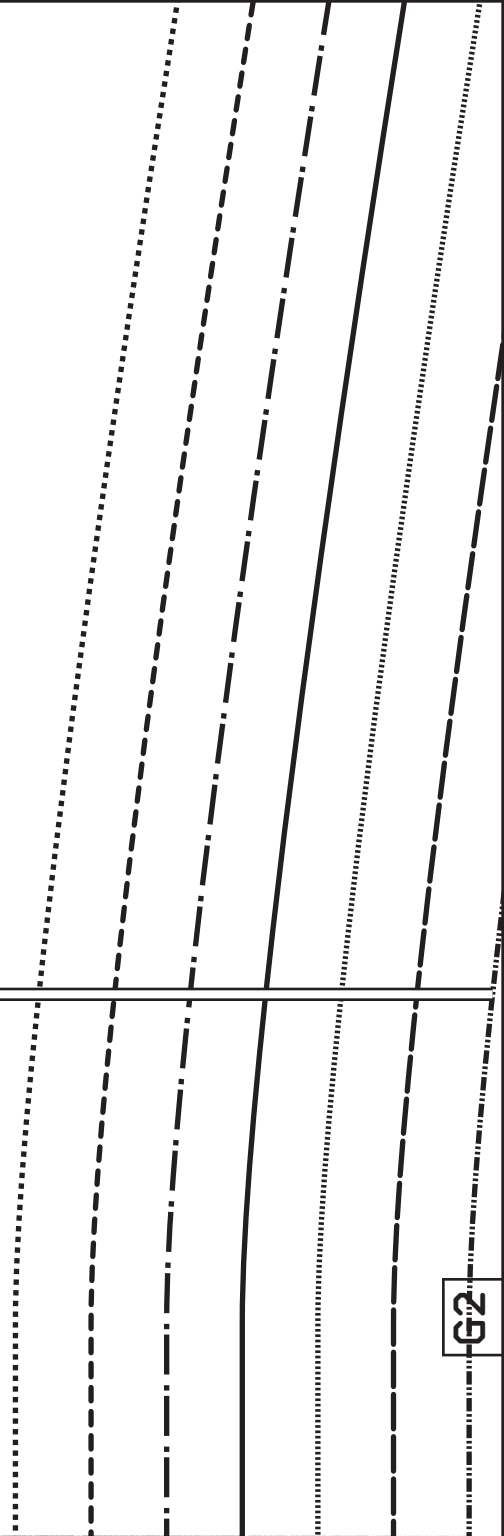
F2



G1



G2



F3

up

unfetteredpatterns.blog

Model #UP1075

Sizes XS-XL

Front lining

Cut 2x lining

**Hem and seam allowances included

G3

G2





cluded | xx

G3



Grainline



F4

up

unfetteredpatterns.blog
Model #UP1075
Sizes XS-XL

Front facing

Cut 2x fabric

Cut 2x interfacing

Grainline



Grainline



G1

up

unfetteredpatterns.blog

Model #UP1075

Sizes XS-XL

Collar

Cut 2x fabric

Cut 2x interfacing

****Hem and seam allowances included****

Place this edge
on the fold of the fabric



Center back

