



UNFETTEREDPATTERNS.BLOG

#UP1070

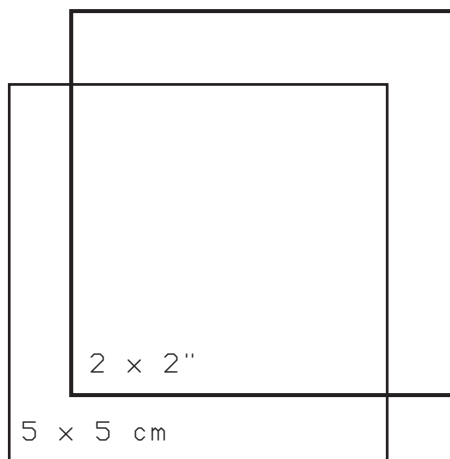
Polo dress

- Difficulty level: intermediate
- Sizes: XS-XL
- **Seam allowances included**



Read first!

Open your PDF sewing patterns in the desktop version of Acrobat Reader, and use the layers feature to hide the sizes you don't need. Click the PRINT icon, ensuring the ACTUAL SIZE option is checked and the orientation is set to default before printing. The control square below is included for size verification. To assemble, trim the bottom and right margins of each sheet, then tape them together, aligning the corresponding markers.



© Unfettered Patterns 2025
 This is a free sewing pattern and resale or distribution is prohibited.

Tiling layout

A1	A2	A3	A4
B1	B2	B3	B4
C1	C2	C3	C4
D1	D2	D3	D4
E1	E2		

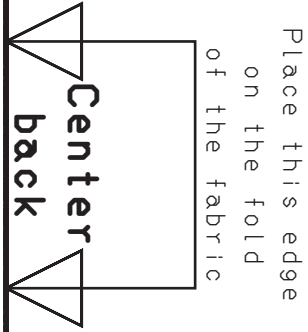
dpn

unfetteredpa
Model #UP107
Sizes XS-XL

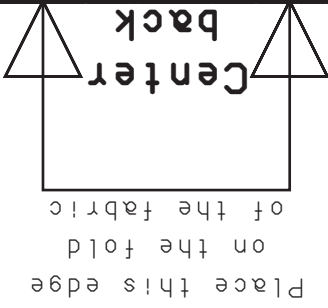
Collar

Cut 2x fabr
Cut 2x inter

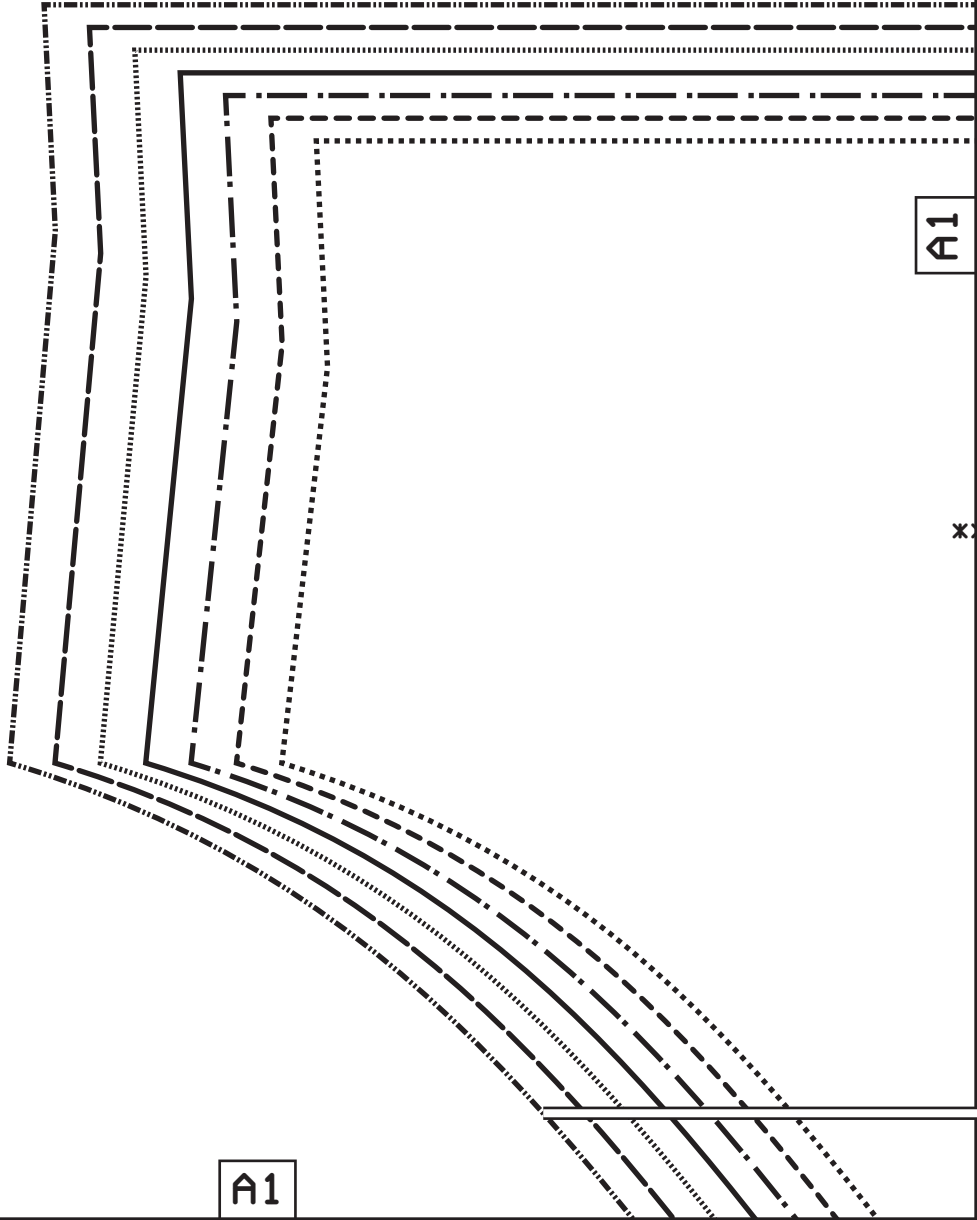
**Hem and se



Place this edge
on the fold
of the fabric



Place this edge
on the fold
of the fabric

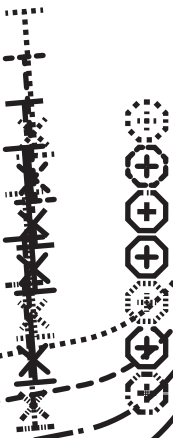


dpn

unfetteredpatterns . blog
Model #UP1070
Sizes XS-XL

Collar stand

Cut 2x fabric
Cut 2x interfacing



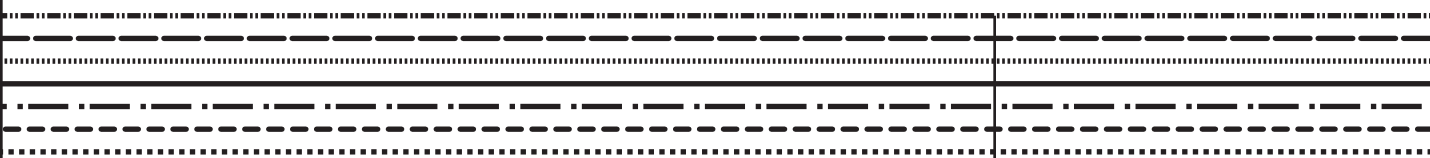
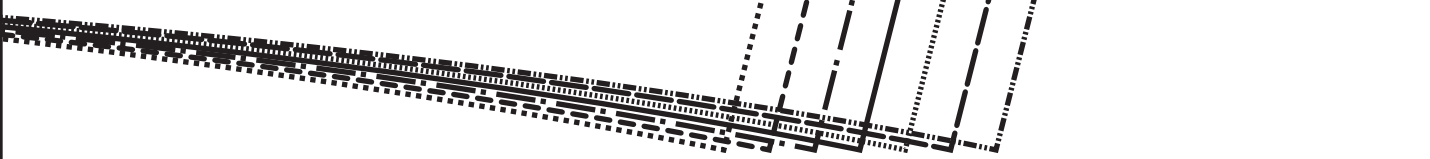
A1

patterns.blog

0

c
facing

am allowances included**



A1

Hem allowance
3 cm (1 1/4")

Hem and seam allowances included

Sleeve
Cut 2x fabric

unfetteredpatterns.blog
Model #UP1070
Sizes XS-XL

dn

Grainline

A2



A2

SIZE KEY

XL

L

M/L

M

S/M

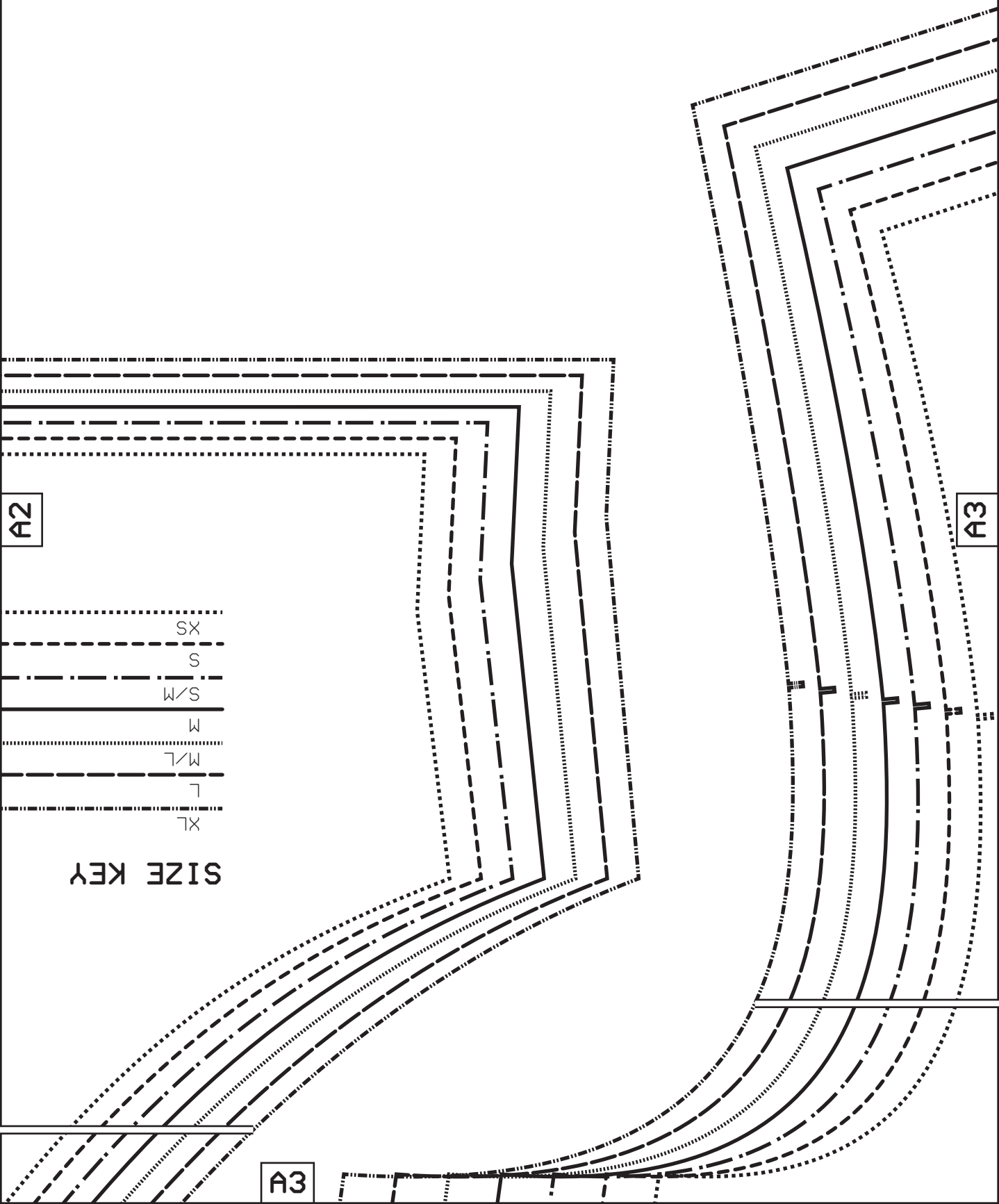
S

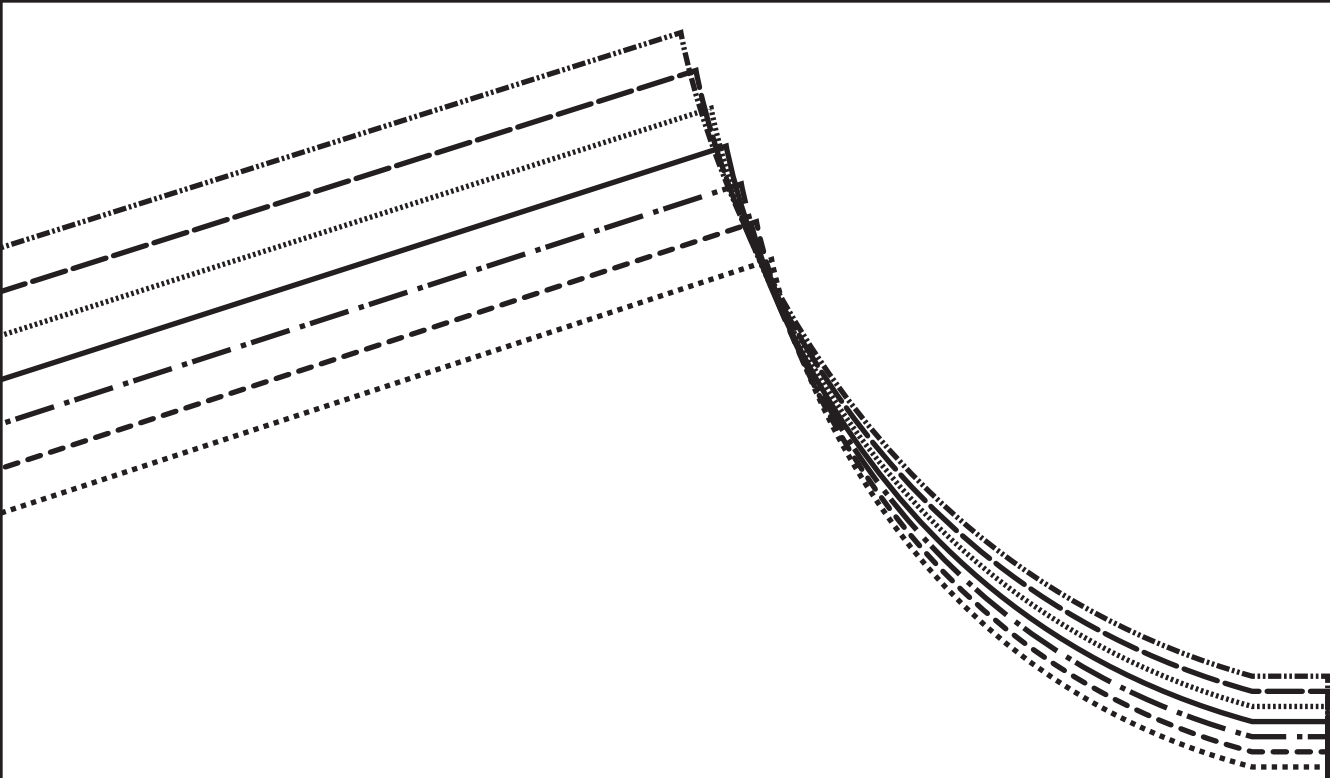
SX

A3

A2

A3





A3

A4

A1

B1

Find the **sewing instructions**, tips and sizing guide for this project by scanning the QR code with your smartphone.

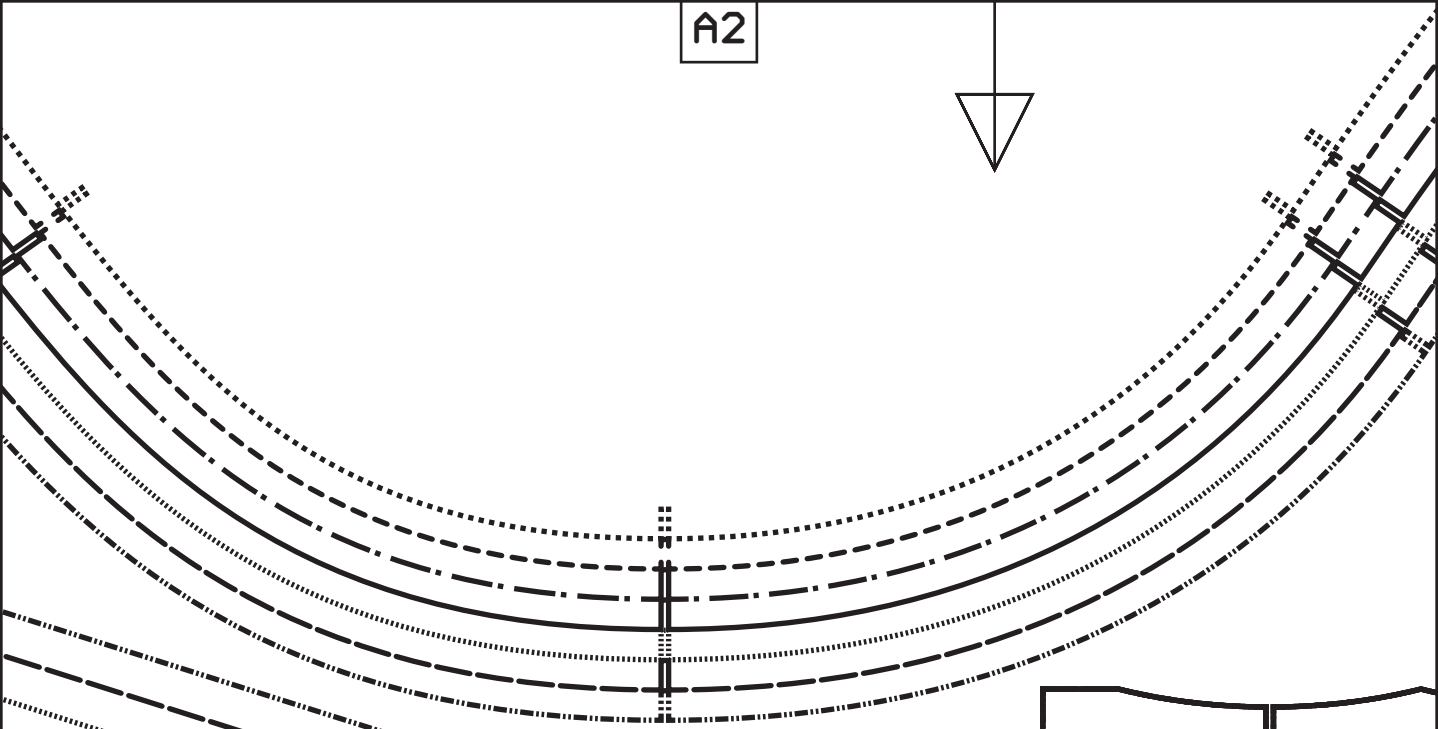
OR

Go to **unfetteredpatterns.blog** and enter **UP1070** in the search bar.

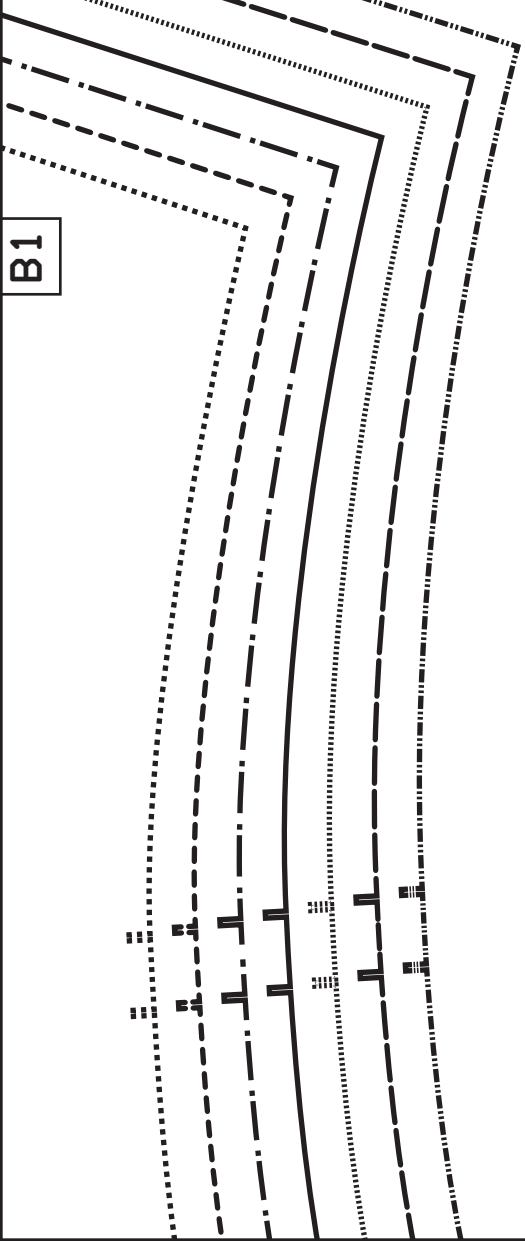


B1

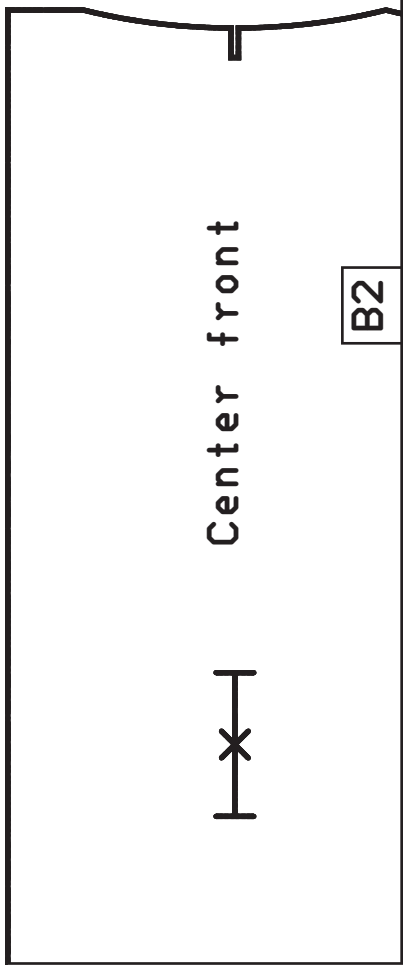
A2



B1



B2



Center front



B2



unfetteredpa
Model #UP107
Sizes XS-XL

Placket
Cut 2x fabri

A3

B2

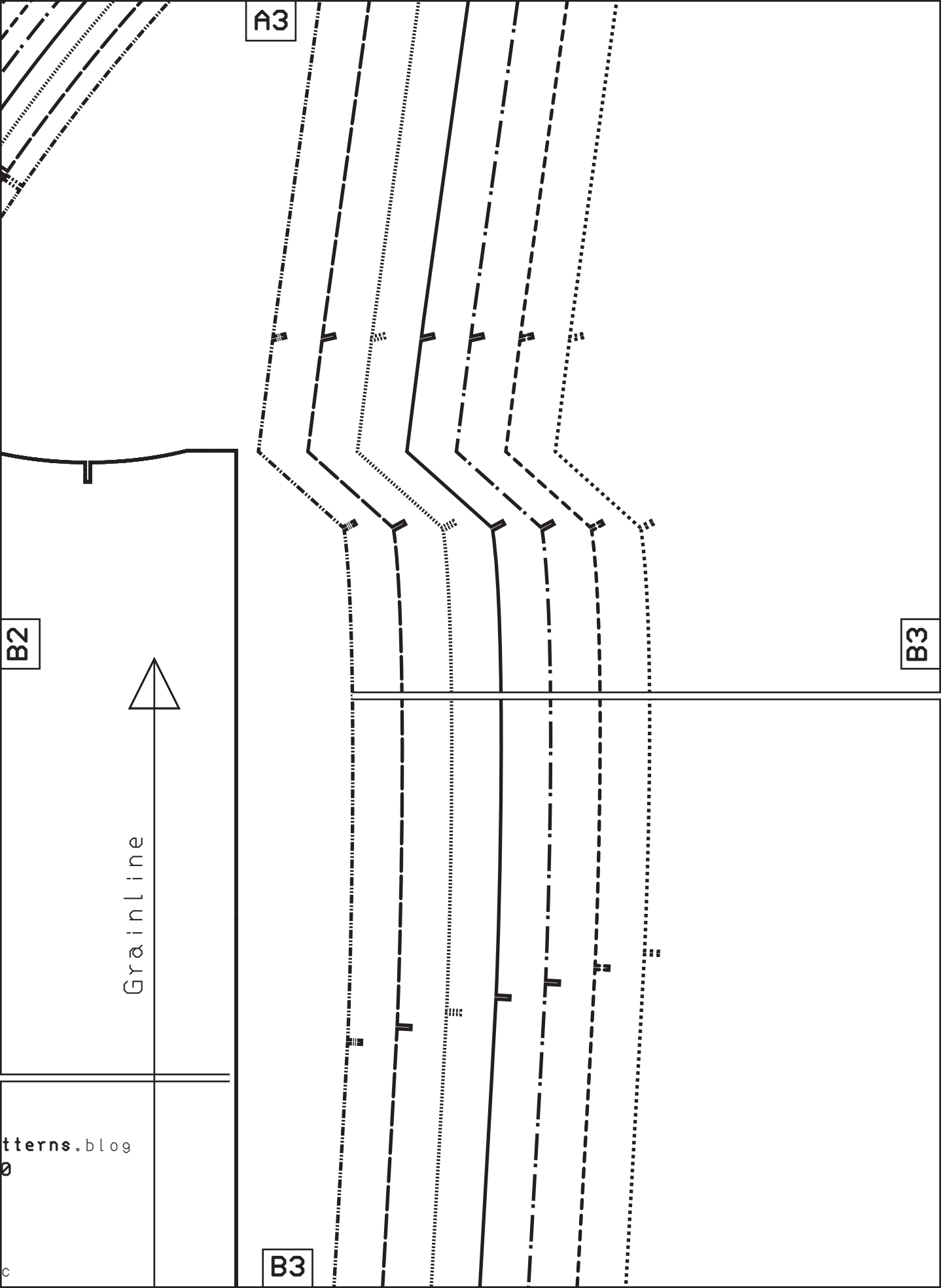
B3

Grainline



patterns.blog

B3



A4



B3

up

unfetteredpatterns.blog

Model #UP1070

Sizes XS-XL

Front

B4

Place this edge
the fold of the fabric



Center front

B1

C1



up

C1



B2

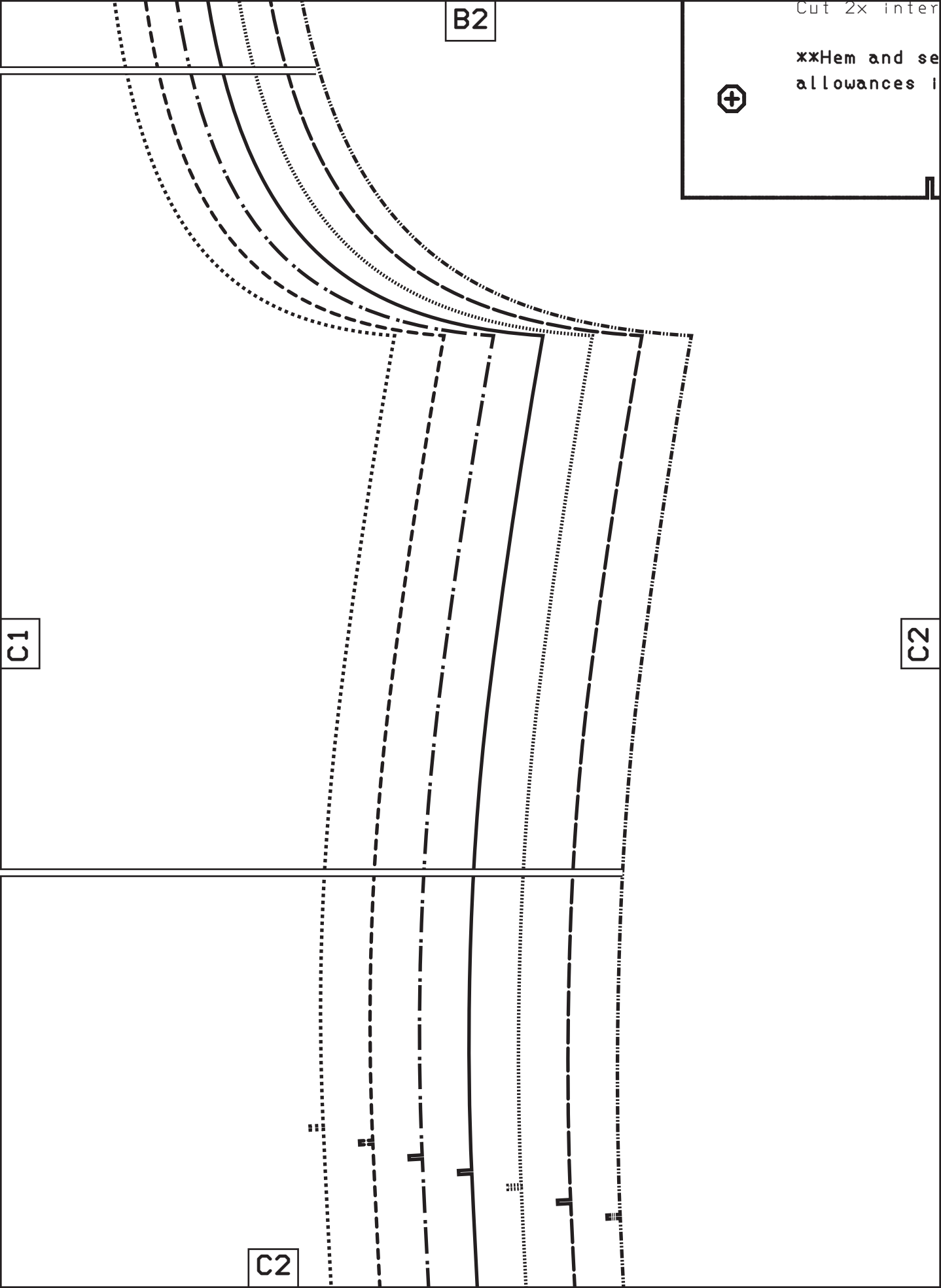
**Hem and se
allowances 1



C1

C2

C2



Facing

am
included | xx



B3

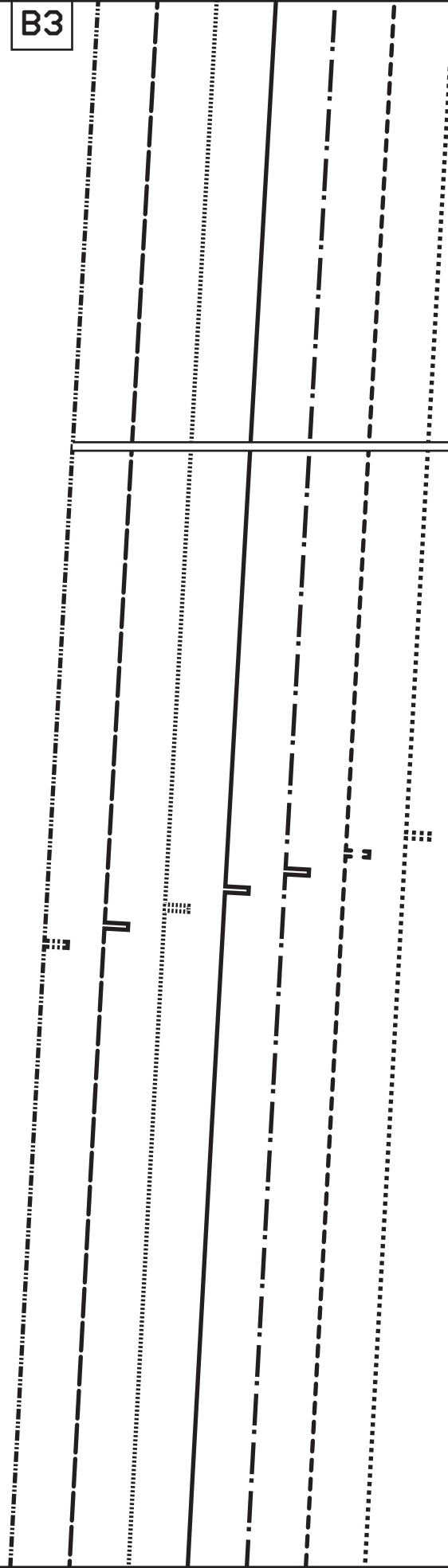
C2

C3

C3

SI

X
L
M
M
S
S
X

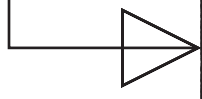


Cut 1x fabric

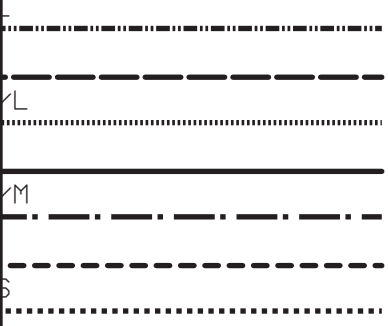
B4

01

Hem and seam allowances included!



SIZE KEY



C4

Center back

C1

unfetteredpatterns.blog

Model #UP1070

Sizes XS-XL

Back

Cut 2x fabric

**Hem and seam allowances included



D1

SIZE KEY

- XL
- L
- M/L
- M
- S/M
- S
- XS

Grainline

D1

PATTERN

NOTCHES

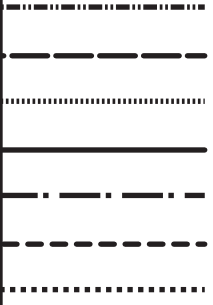


C2

dedlxx

D1

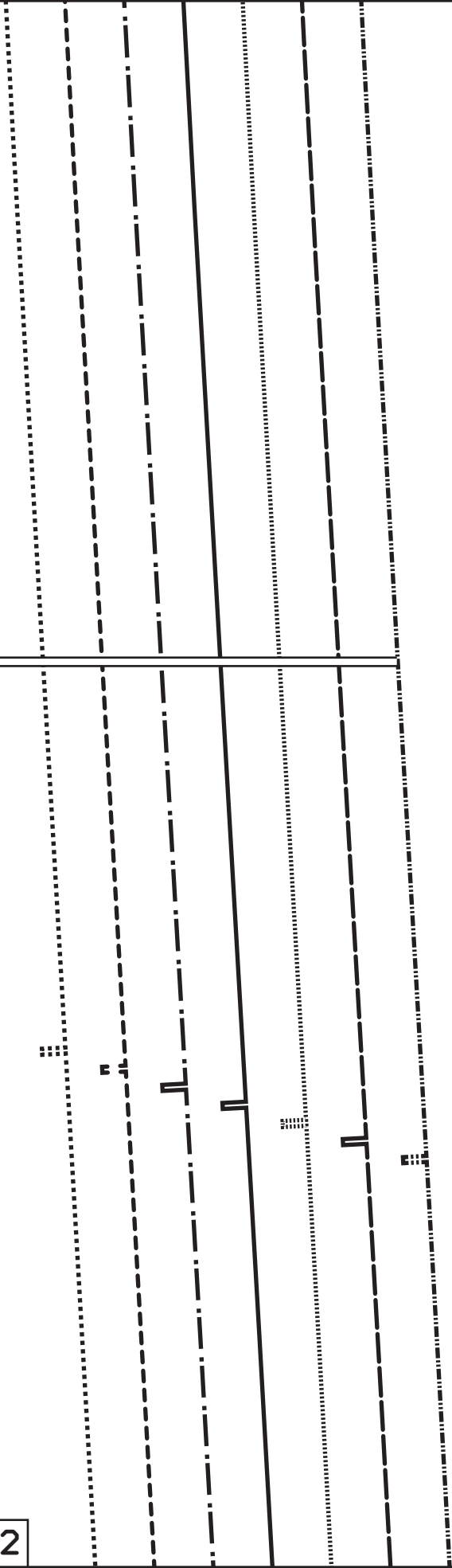
D2



SYMBOLS



D2

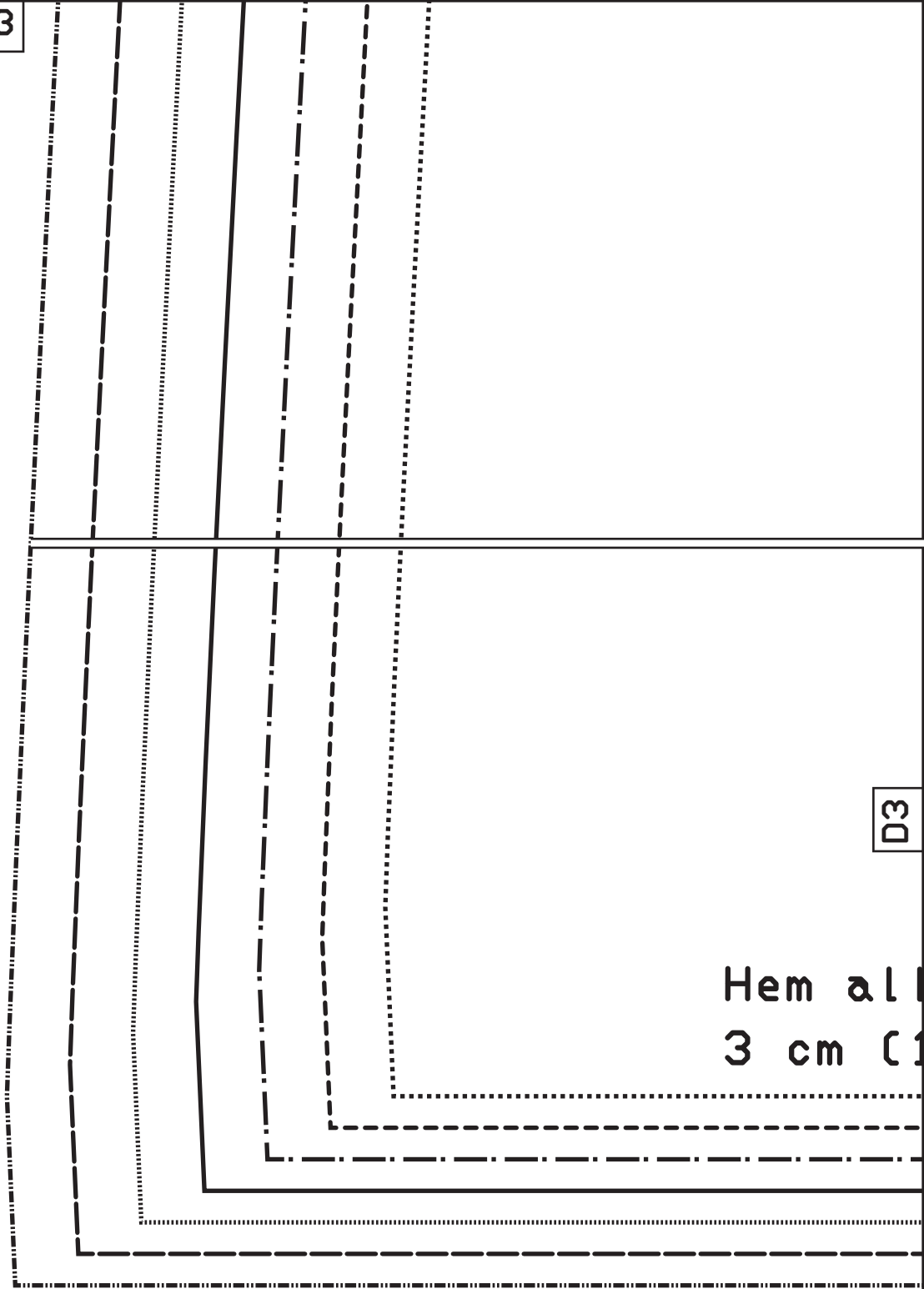


C3

D2

D3

Hem a l
3 cm (1



D1

MARKING



BUTTON



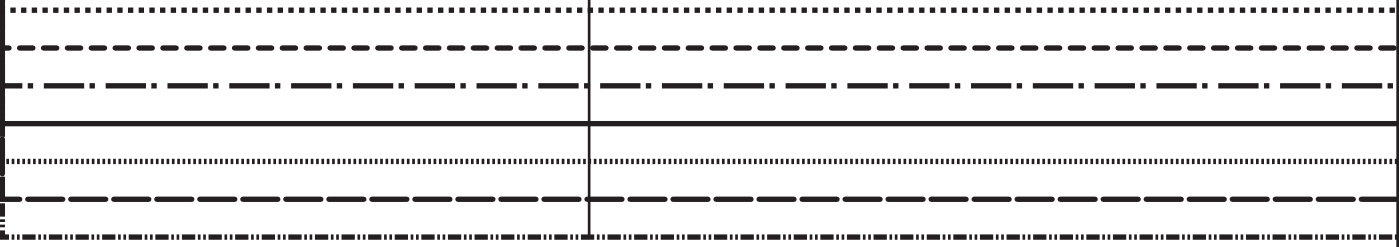
BUTTONHOLE



E1

Hem allow

3 cm (1 1/4")



LINE

D2

E1

uance
(. /4")

