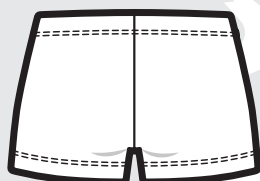
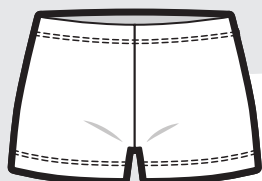
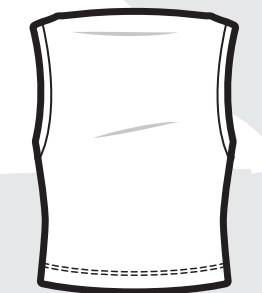


#UP1069

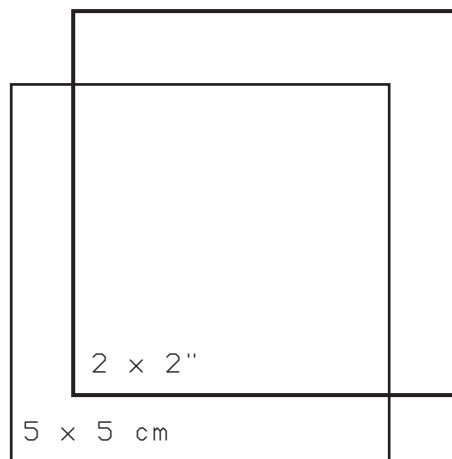
2-piece set

- Difficulty level: easy
- Sizes: XS-XL
- **Seam allowances included**



Read first!

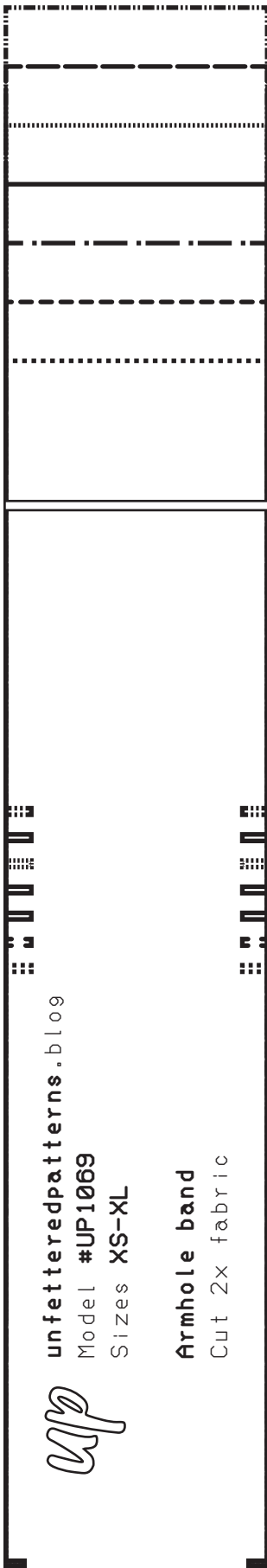
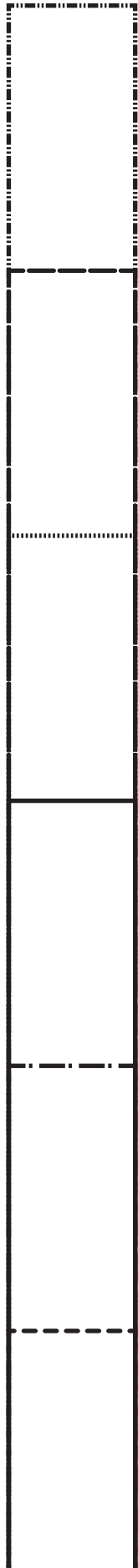
Open your PDF sewing patterns in the desktop version of Acrobat Reader, and use the layers feature to hide the sizes you don't need. Click the PRINT icon, ensuring the ACTUAL SIZE option is checked and the orientation is set to default before printing. The control square below is included for size verification. To assemble, trim the bottom and right margins of each sheet, then tape them together, aligning the corresponding markers.



© Unfettered Patterns 2025
This is a free sewing pattern and resale or distribution is prohibited.

Tiling layout

A1	A2	A3
B1	B2	B3
C1	C2	C3
D1	D2	D3



up

unfetteredpatterns.blog
Model #UP1069
Sizes XS-XL

Armhole band
Cut 2x fabric

up

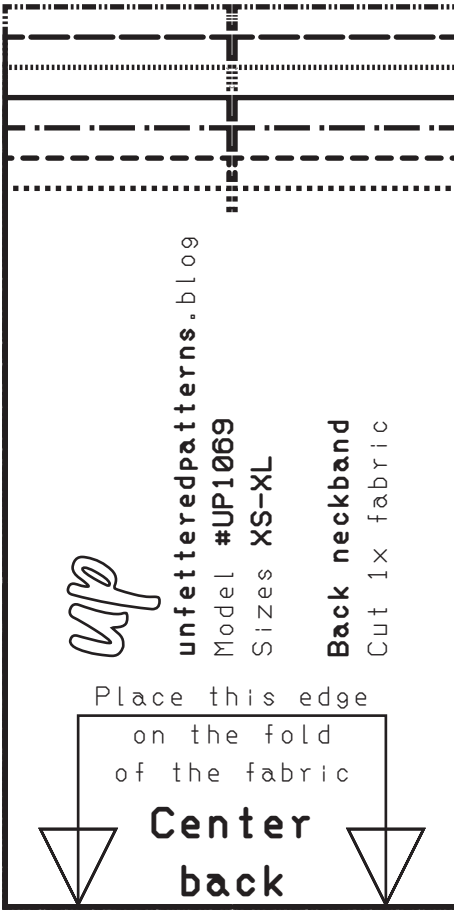
unfetteredpatterns.blog
Model #UP1069
Sizes XS-XL

Back neckband
Cut 1x fabric

Place this edge
on the fold
of the fabric

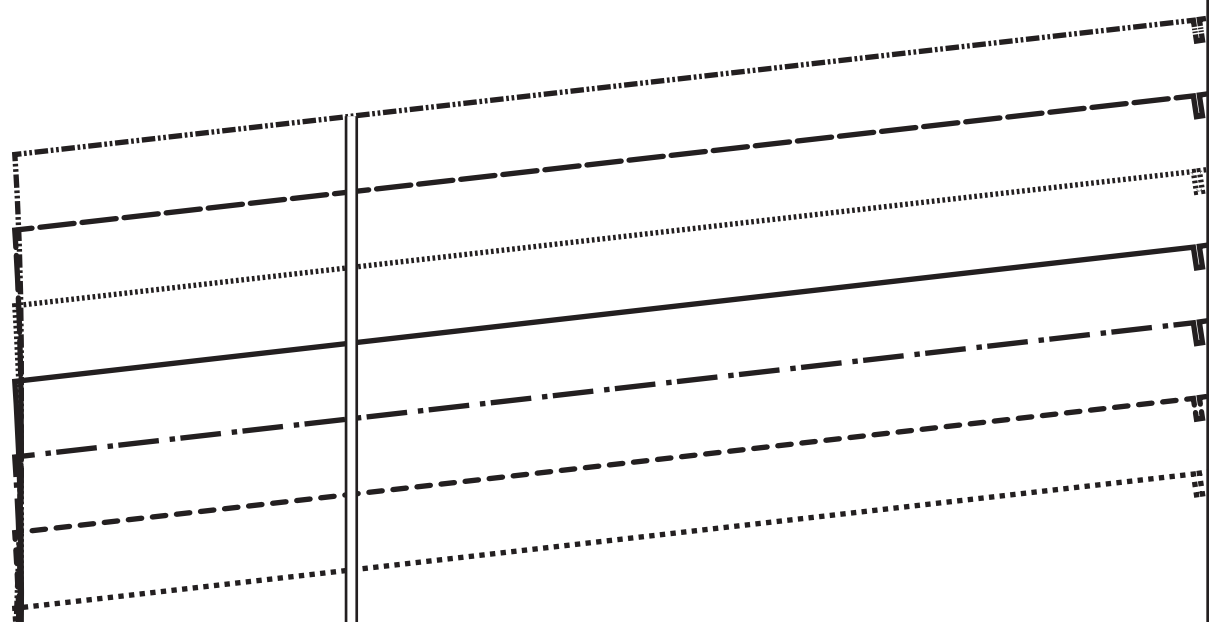


**Center
back**



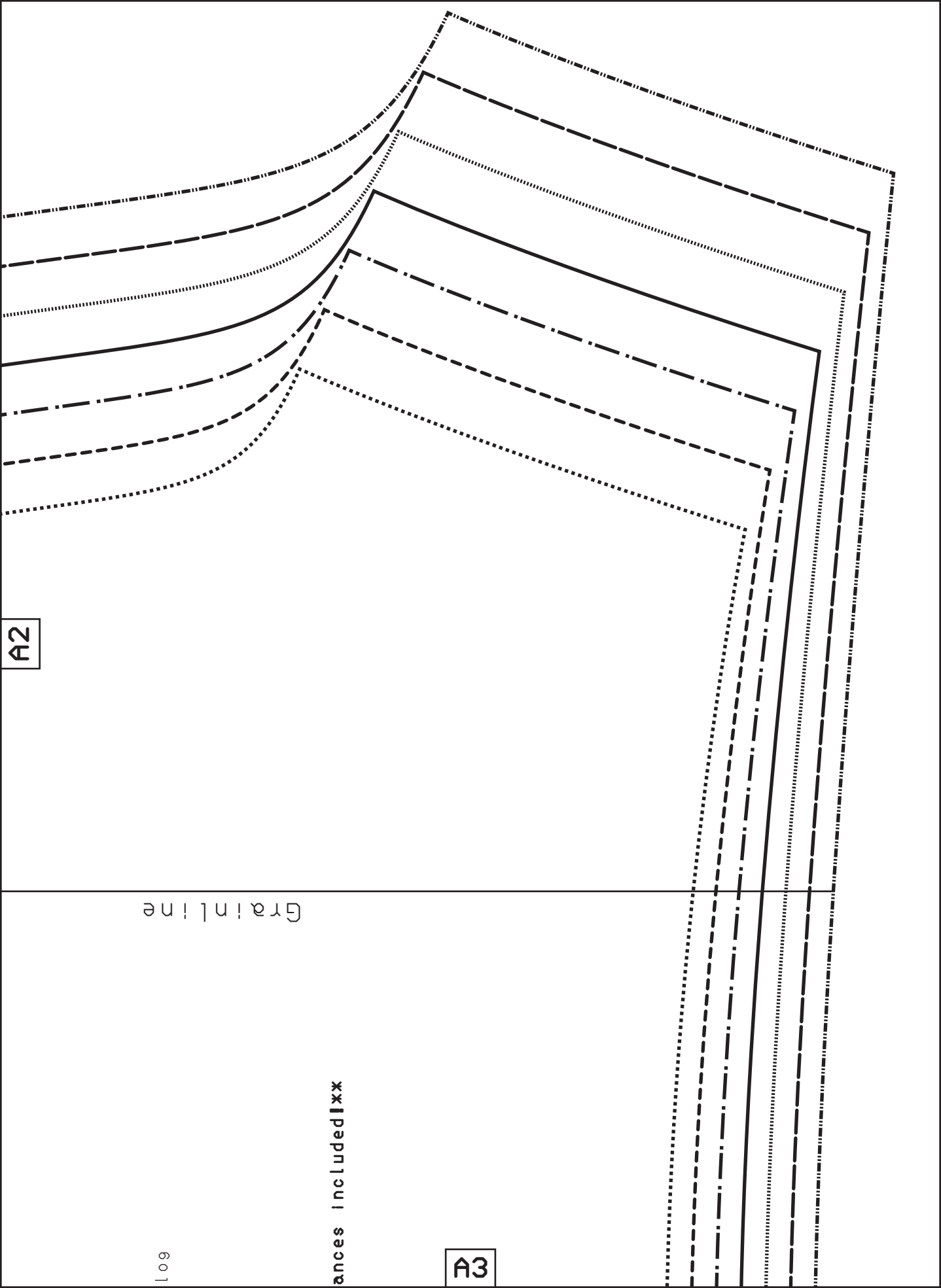
A1

A2



s, tips and
 scanning
 artphone.
 OR
 and enter
 search bar.

A2



Grainline

601

ances included |xx

A3

A2



unfetteredpatterns.blog

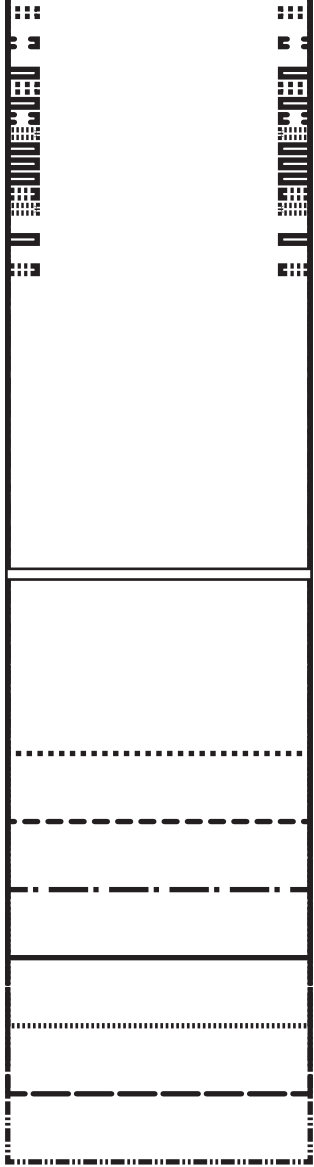
Model #UP1069

Sizes XS-XL

Waist elastic

Cut 1x knitted elastic

2 cm (3/4") wide

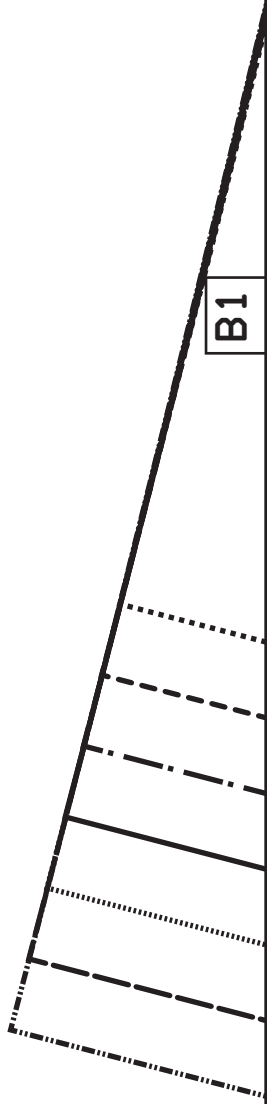


Grain
line

B1

A1

B1










B1

Hem allowance
2 cm (3/4")

A2

SIZE KEY

- XL 
- L 
- M/L 
- M 
- S/M 
- S 
- XS 

Find the **sewing instruction** sizing guide for this project by the QR code with your sm

Go to **unfetteredpatterns.blog** **UPI069** in the s

B2

B2





unfetteredpatterns . b
 Model #UP1069
 Sizes XS-XL

Shorts

Cut 2x fabric


xxHem and seam allow


A3


**Hem allowance
 2 cm (3/4")**


B2


PATTERN SYMBOLS

NOTCHES 

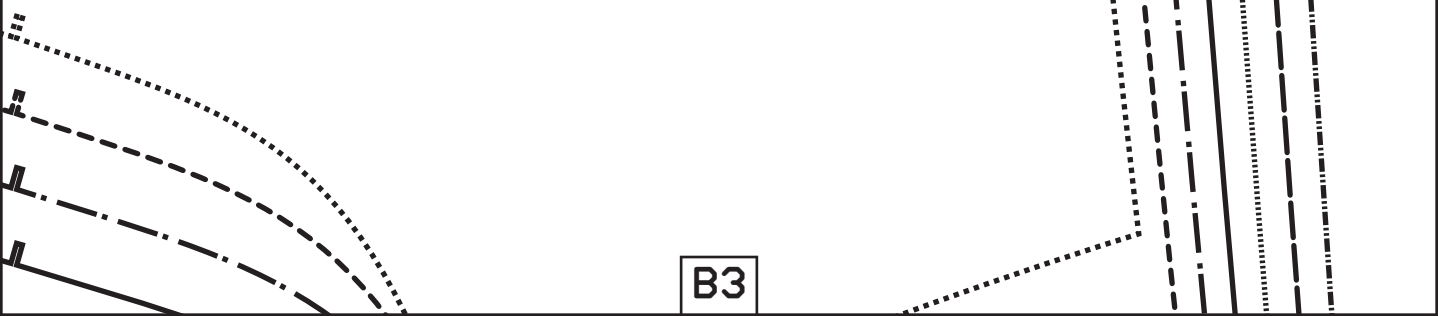
ADJUSTMENT LINE 

MARKING 

BUTTON X 

BUTTONHOLE 

B3



B1

Hem allowance
2 cm (3/4")

C1

xxHem and seam allowances includedxx

Cut 1x fabric

Front

Sizes XS-XL

Model #UP1069

unfetteredpatterns.blog

Place this edge

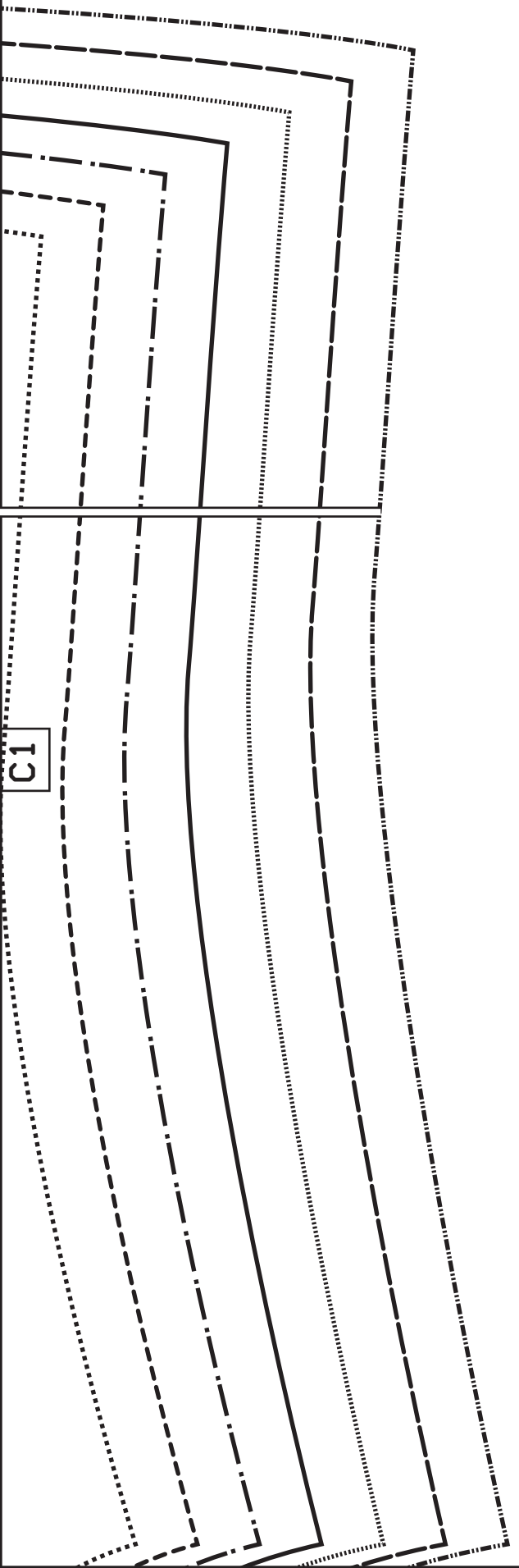
on the fold of the fabric

Center front

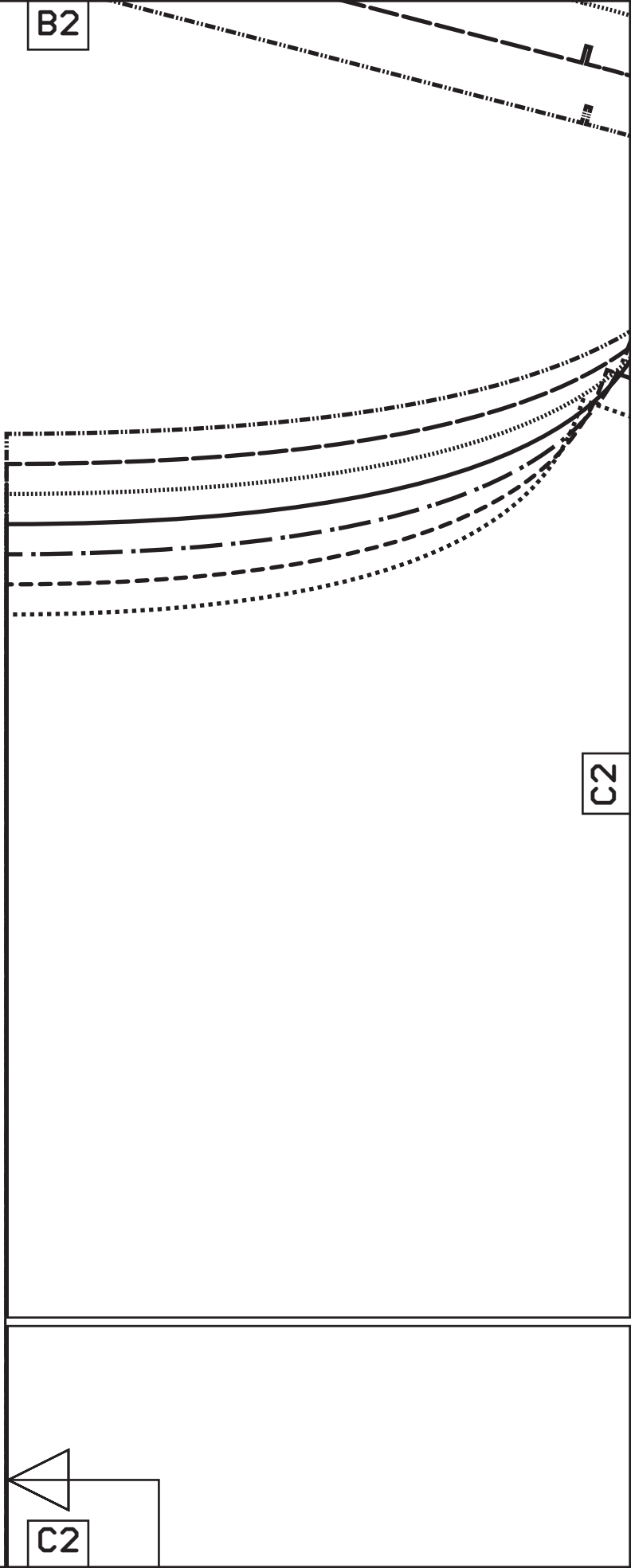


C1

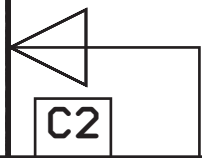
B2



C1



C2

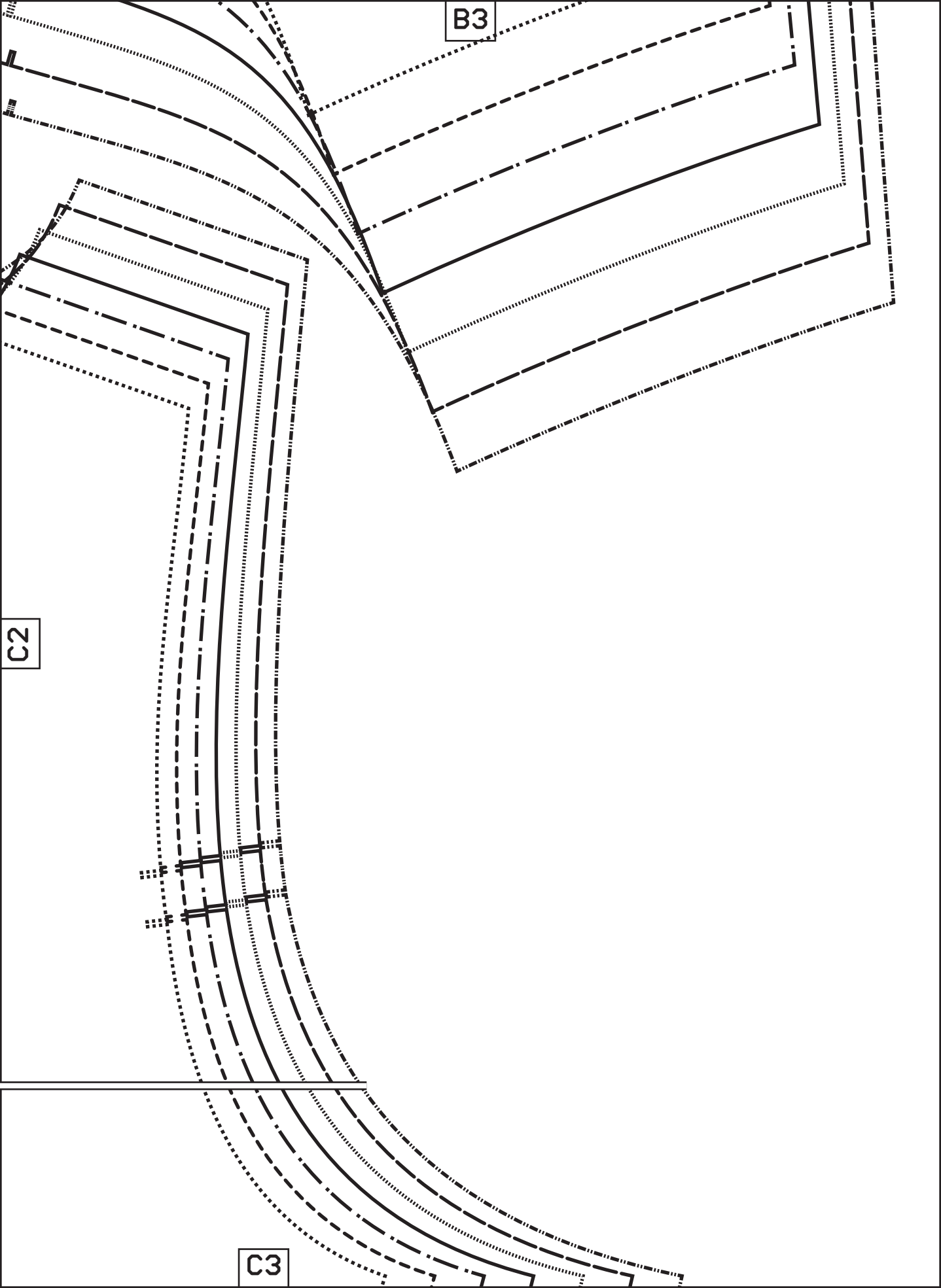


C2

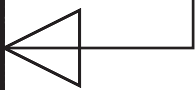
B3

C2

C3



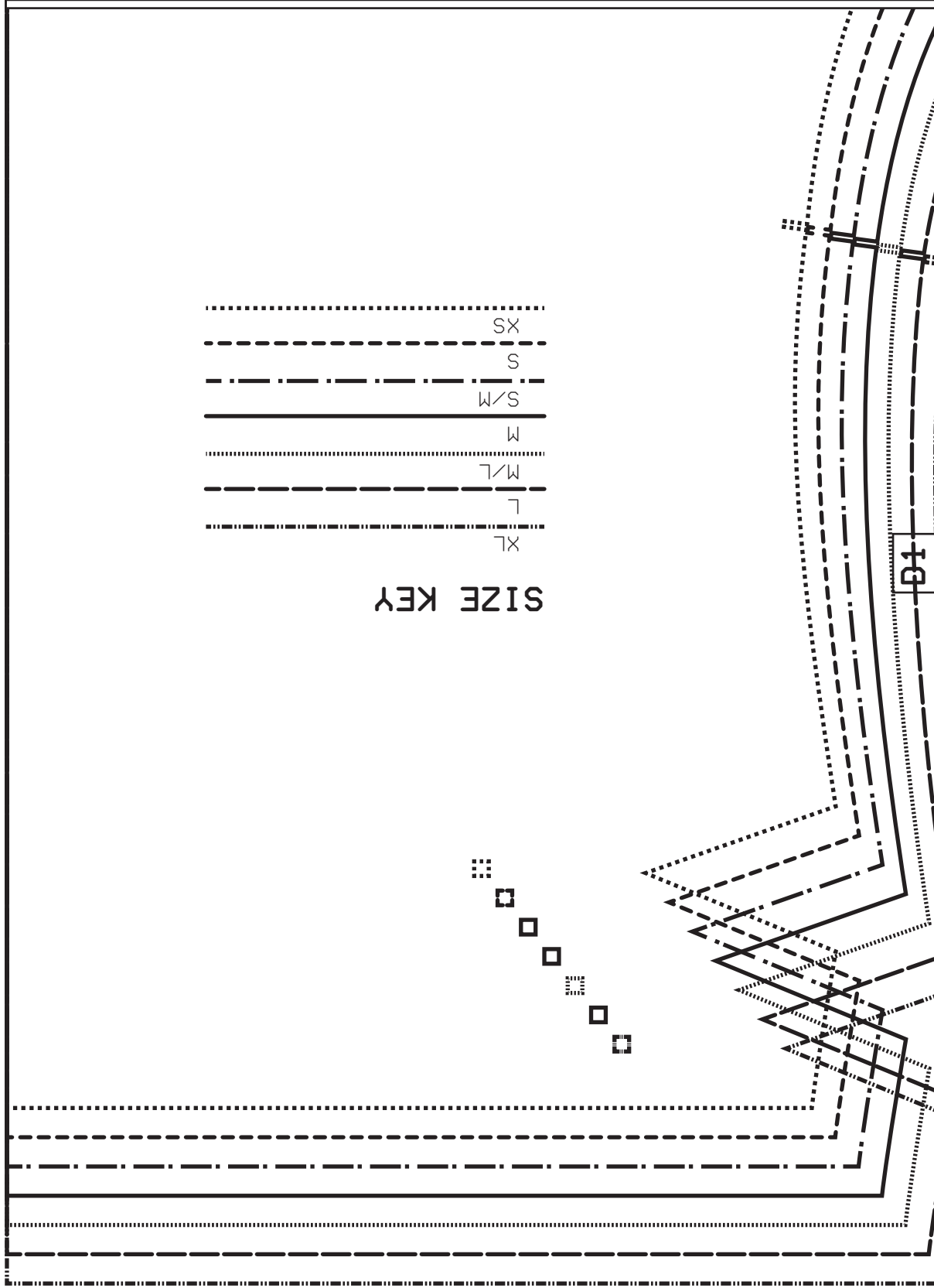
C1

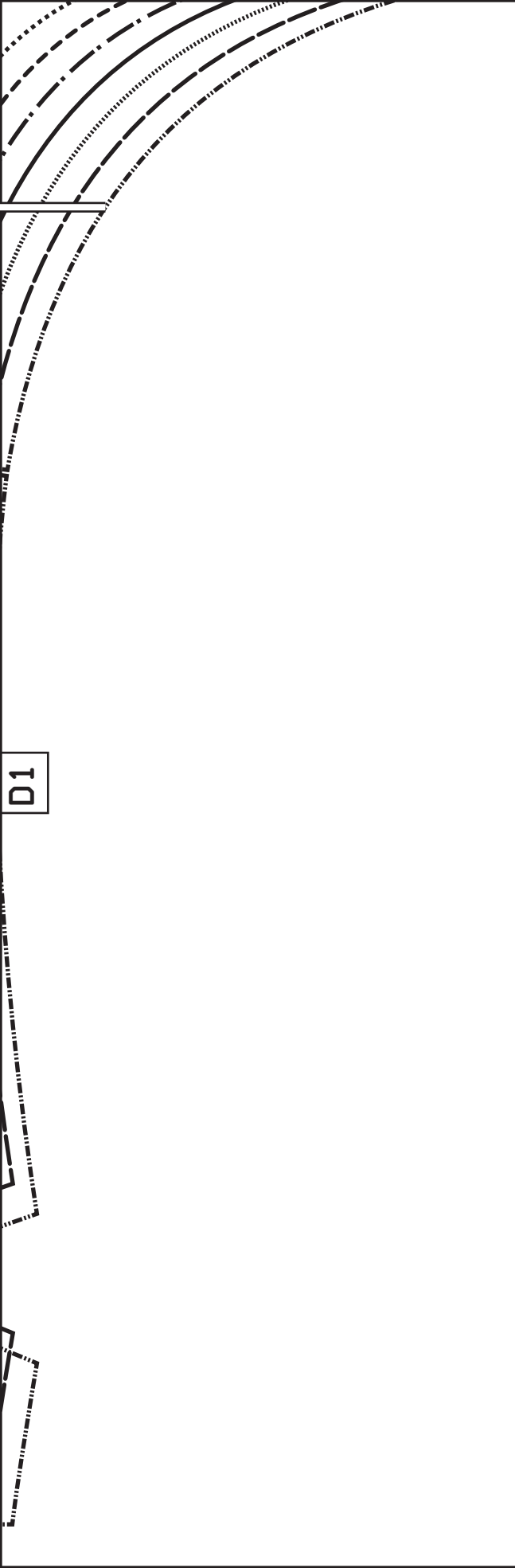


.....	SX
-----	S
- . - . - .	S/M
—————	M
.....	M/L
-----	L
.....	XL

SIZE KEY

D1





C2

Center back

Place this edge
on the fold of the fabric



unfetteredpatterns.blog

Model #UP1069

Sizes XS-XL

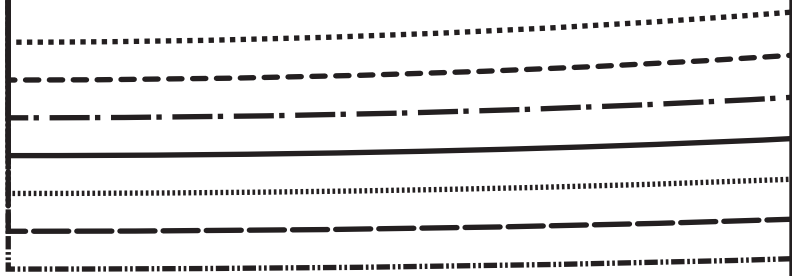
Back

Cut 1x fabric

**Hem and seam allowance

D2

Hem allowance
2 cm (3/4")



D1

C3

9

ces included!xx

D2

e

