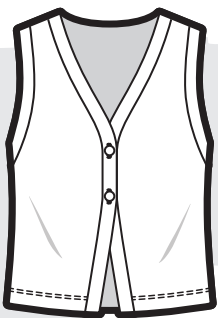


## #UP1065

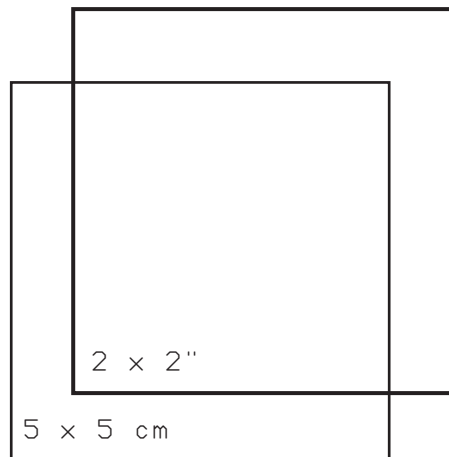
### Sweater vest

- Difficulty level: easy
- Sizes: XS-XL
- **Seam allowances included**



### Read first!

Open your PDF sewing patterns in the desktop version of Acrobat Reader, and use the layers feature to hide the sizes you don't need. Click the PRINT icon, ensuring the ACTUAL SIZE option is checked and the orientation is set to default before printing. The control square below is included for size verification. To assemble, trim the bottom and right margins of each sheet, then tape them together, aligning the corresponding markers.










Measure the control square using a sturdy ruler. If the dimensions differ from those indicated, recheck your print settings and try printing again.

### Tiling layout

A1	A2	A3
	B2	B3
	C2	C3

xxHem and **6**cm allowances included!xx

### SIZE KEY

- XL 
- L 
- M/L 
- M 
- S/M 
- S 
- XS 

Grainline

**Hem allowance  
3 cm (1 1/4")**



A2

A2

*UP*



unfetteredpatterns.blog

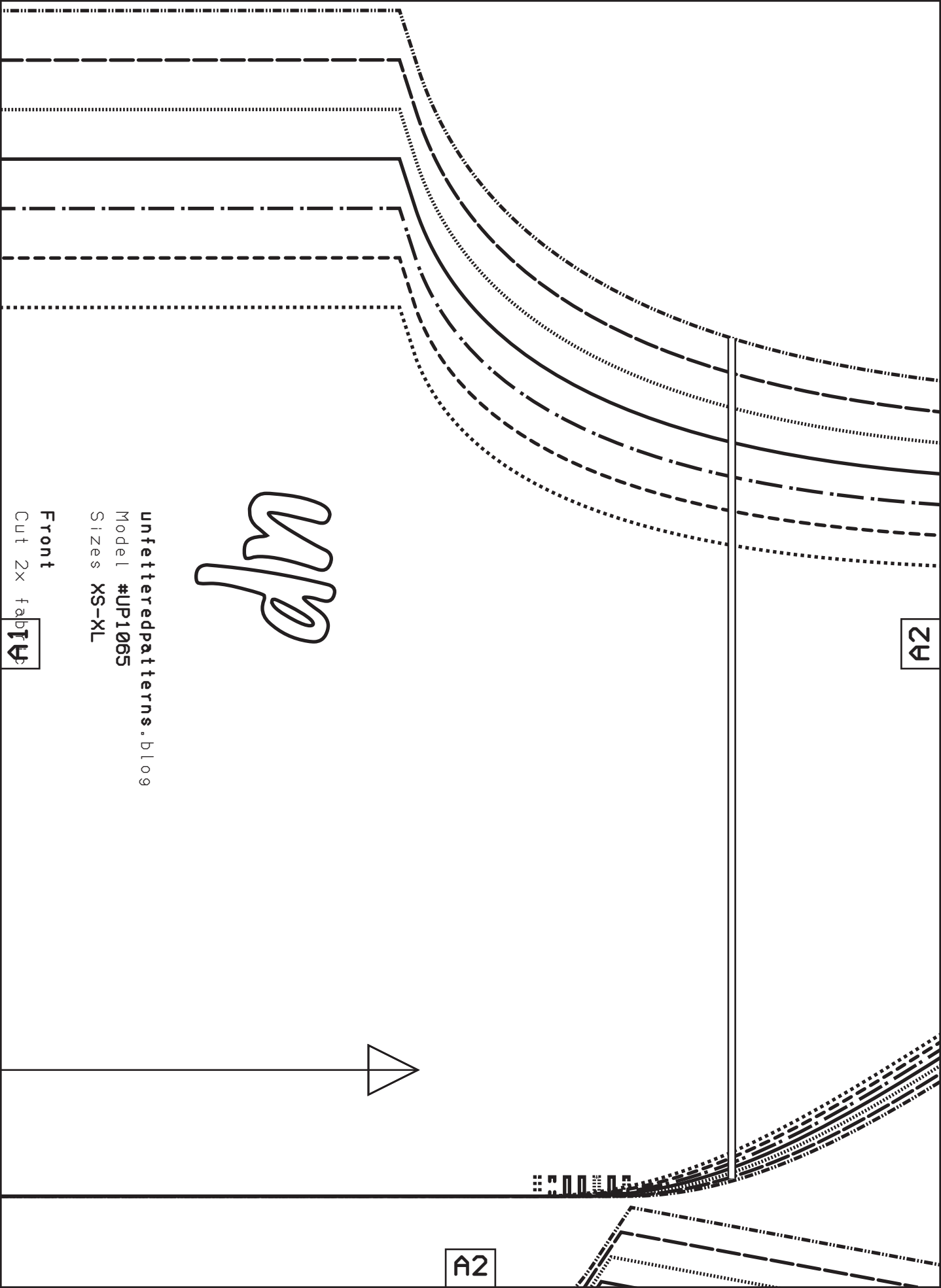
Model #UP1065

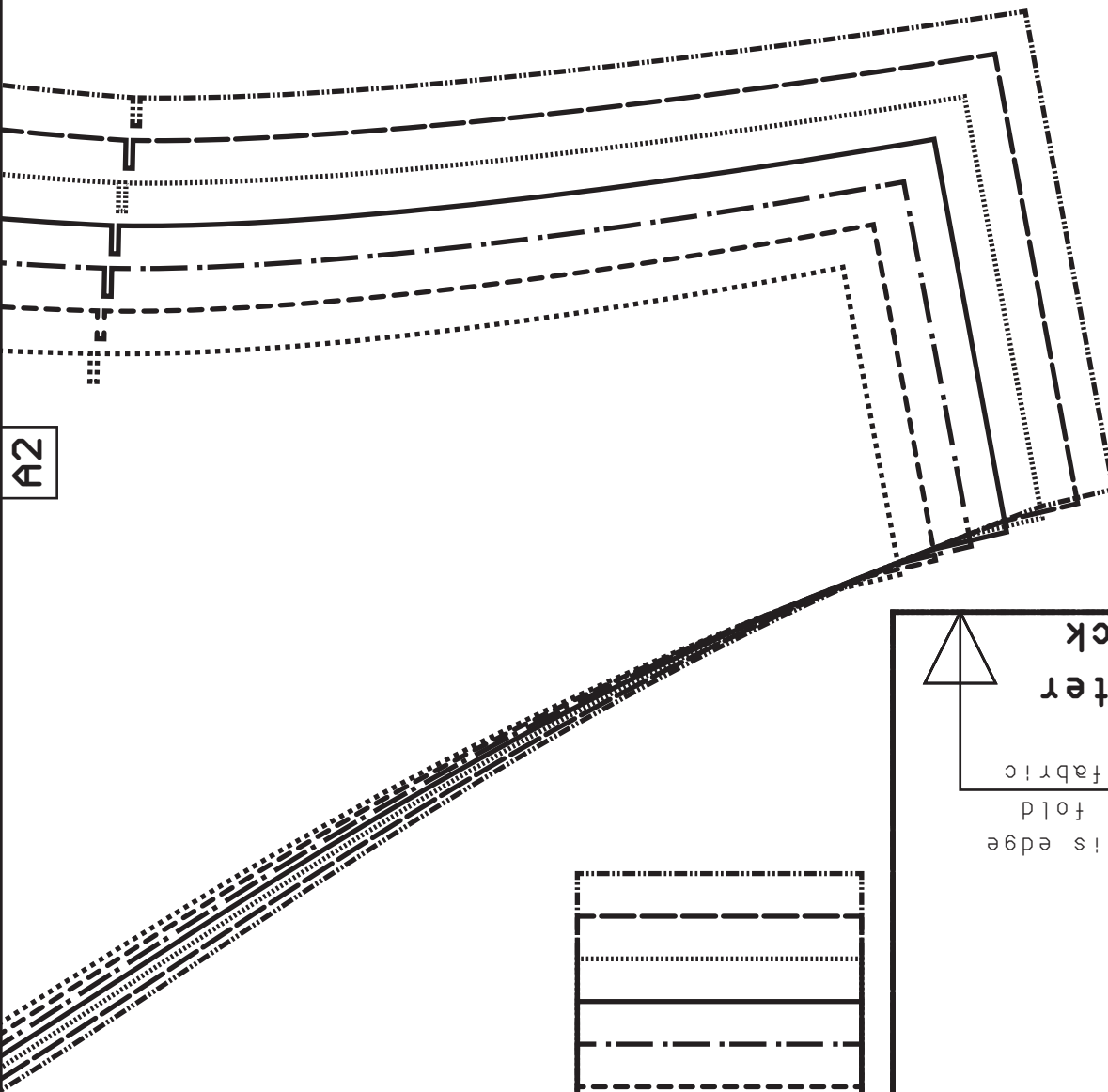
Sizes XS-XL

Front

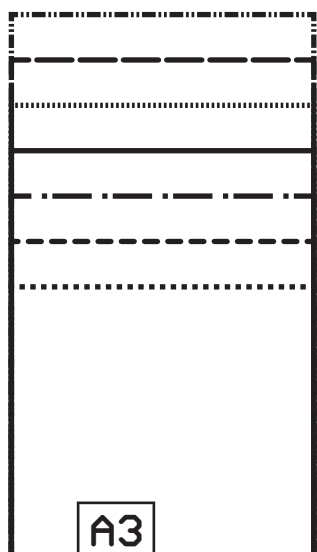
Cut 2x fabric

A1






A2



A3

Place this edge  
on the fold

Center  
back










unfetteredpattern  
Model #UP1065  
Sizes XS-XL

**Neckband**  
Cut 1x fabric

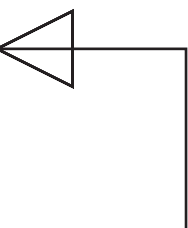
A2

### SIZE KEY

XL	
L	
M/L	
M	
S/M	
S	
XS	

Center back

B2



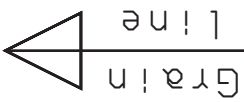
Find the **sewing instructions**, tips and sizing guide for this project by scanning the QR code with your smartphone.

OR

Go to **unfetteredpatterns.blog** and enter **UP1065** in the search bar.



A3



unfetteredpatterns.blog

Model #UP1065

Sizes XS-XL

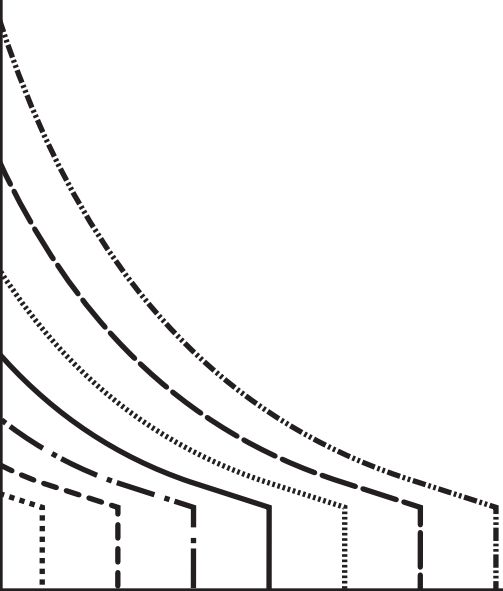


Armhole band

Cut 2x fabric

B3

B2



unfetteredpatterns.blog  
Model #UP1065  
Sizes XS-XL

Back

Cut 1x fabric

**xxHem and seam allowances includedxx**

Place this edge

on the fold of the fabric

### PATTERN SYMBOLS

NOTCHES



ADJUSTMENT LINE



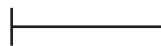
MARKING



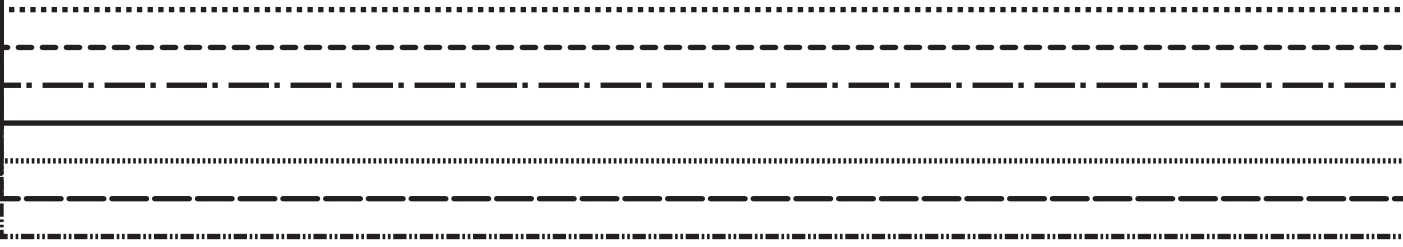
BUTTON



BUTTONHOLE



Hem allowance  
3 cm (1 1/4")



B3



C2

