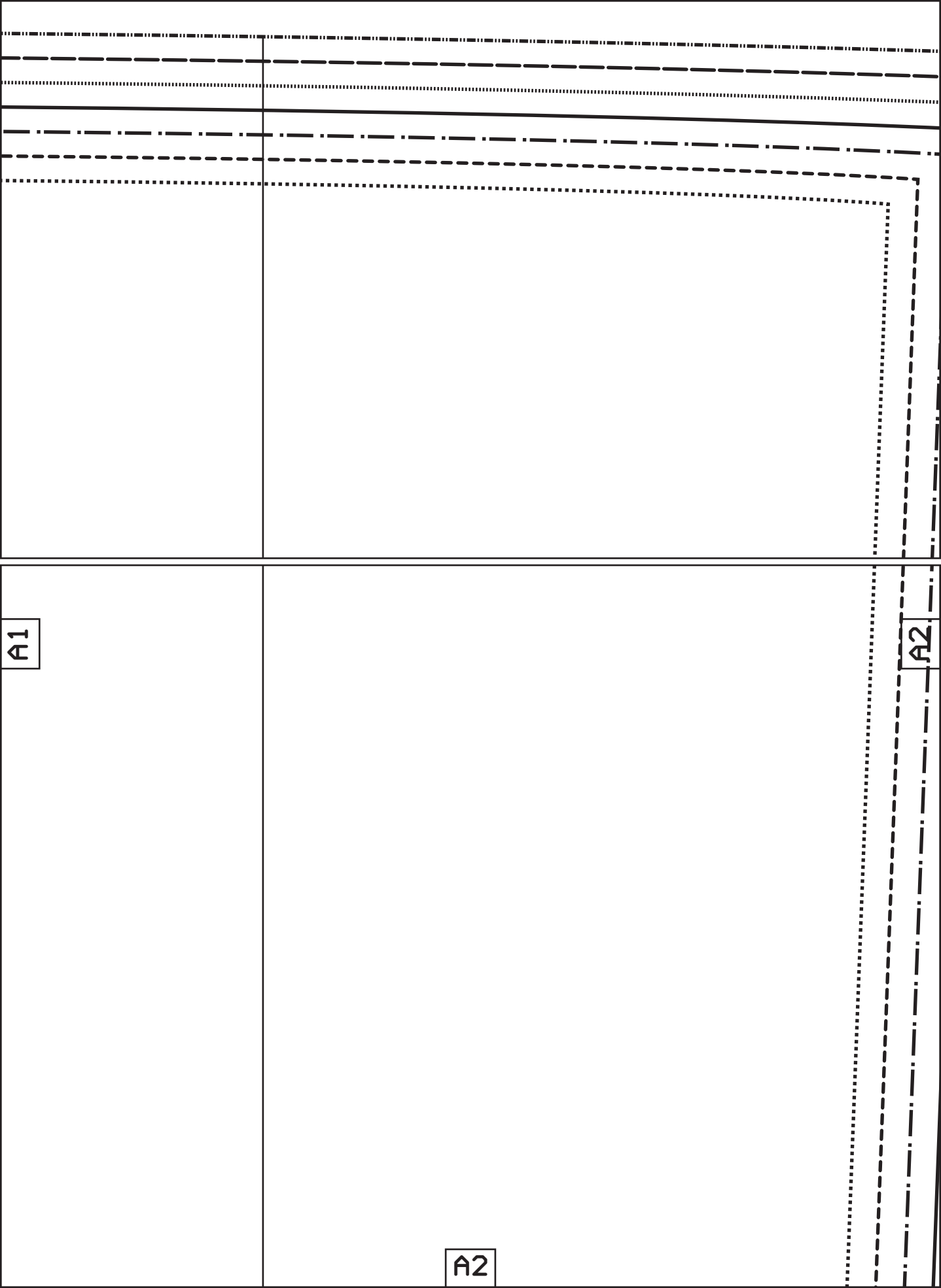


Hem allowance
5 cm (2")

A1

A1



A1

A2

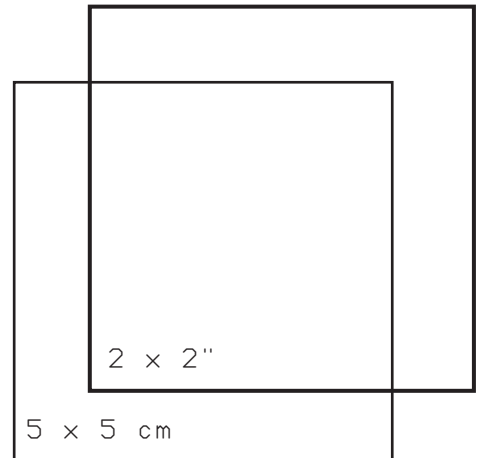
A2

Tiling layout

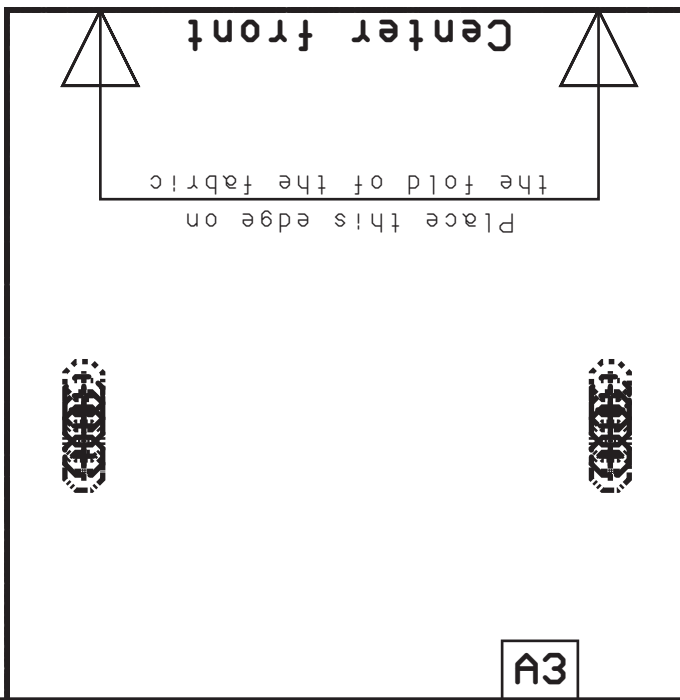
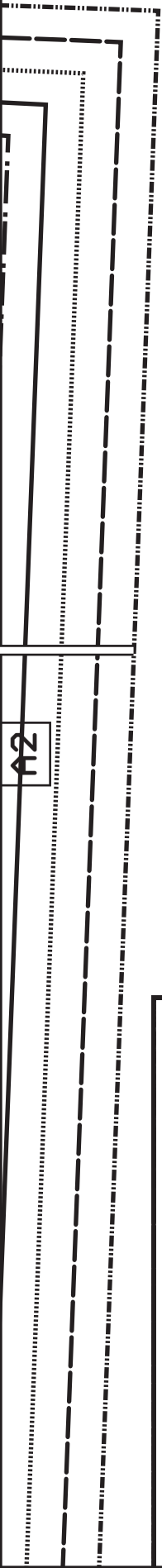
| | | | |
|----|----|----|----|
| A1 | A2 | A3 | |
| B1 | B2 | B3 | |
| C1 | C2 | C3 | C4 |
| D1 | D2 | D3 | D4 |
| E1 | E2 | E3 | E4 |
| F1 | F2 | F3 | F4 |
| | G2 | G3 | G4 |
| | H2 | H3 | H4 |

Read first!

Open your PDF sewing patterns in the desktop version of Acrobat Reader, and use the **layers** feature to hide the sizes you don't need. Click the PRINT icon, ensuring the **ACTUAL SIZE** option is checked and the orientation is set to default before printing. The control square below is included for size verification. To **assemble**, trim the bottom and right margins of each sheet, then tape them together, aligning the corresponding markers.



© Unfettered Patterns 2025
This is a free sewing pattern and resale or distribution is prohibited.

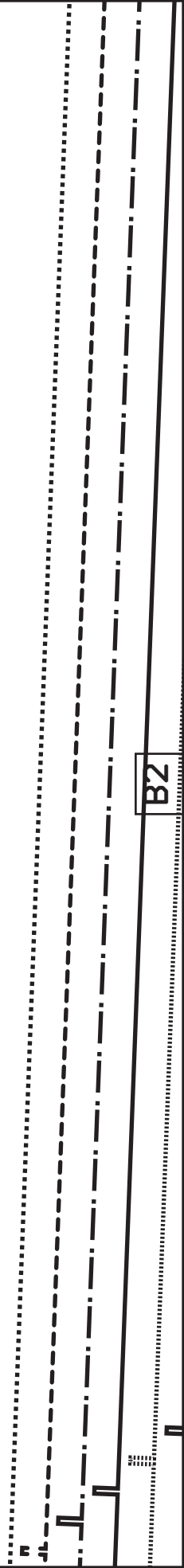


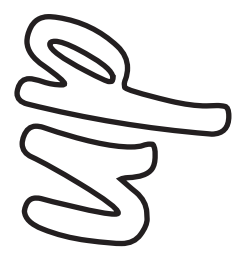
A2

B1

B2

B2





unfetteredpatterns.blog

Model #UP1064

Sizes XS-XL

Collar

Cut 1x fabric

Hem and seam allowances included

B1



and the **sewing instructions**, tips and
ng guide for this project by scanning
the QR code with your smartphone.
OR
enter **unfetteredpatterns.blog** and enter
UP1064 in the search bar.

C1

seam allowances included

abric

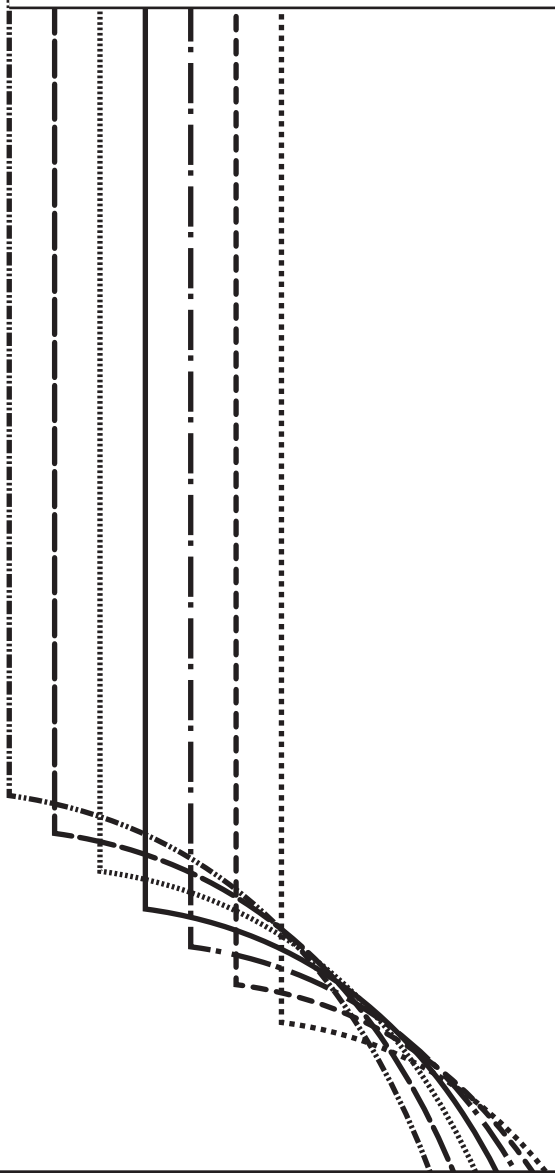
XL

1064

patterns.blog



C1



B2

Grainline

Go to
F
SIZI

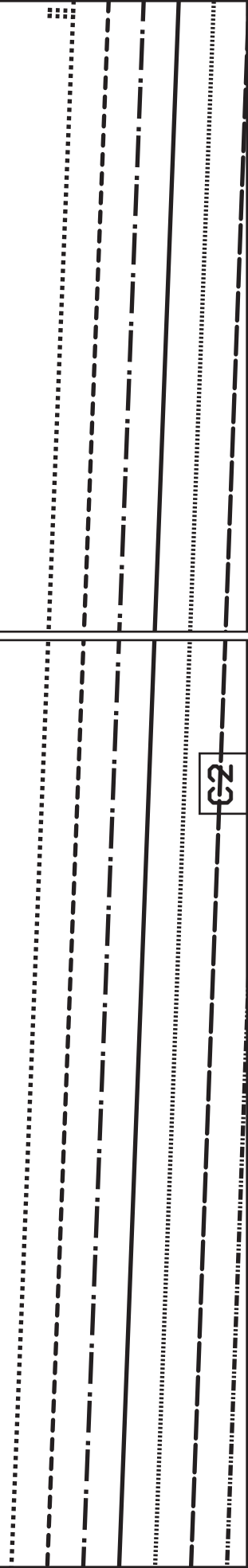
C1

unfettere
Model #UR
Sizes XS-
Front
Cut 2x ft
xxHem and



C2

C2



C2

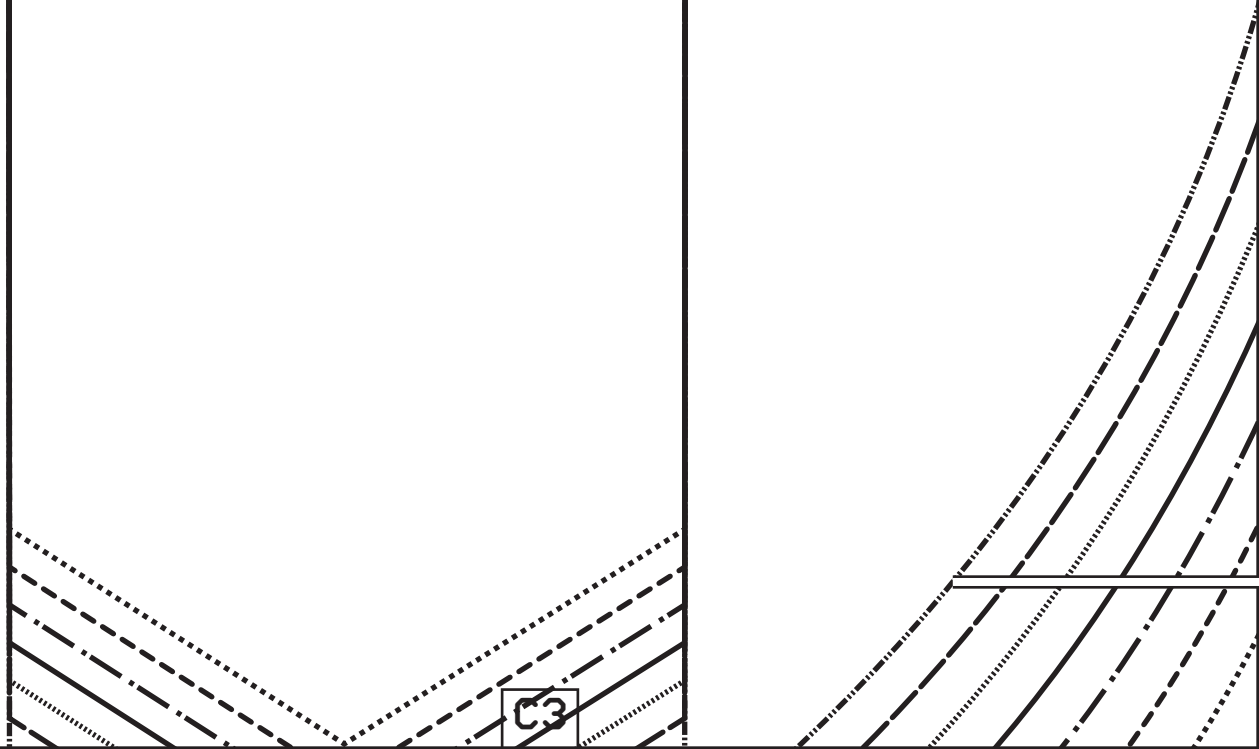
SIZE KEY

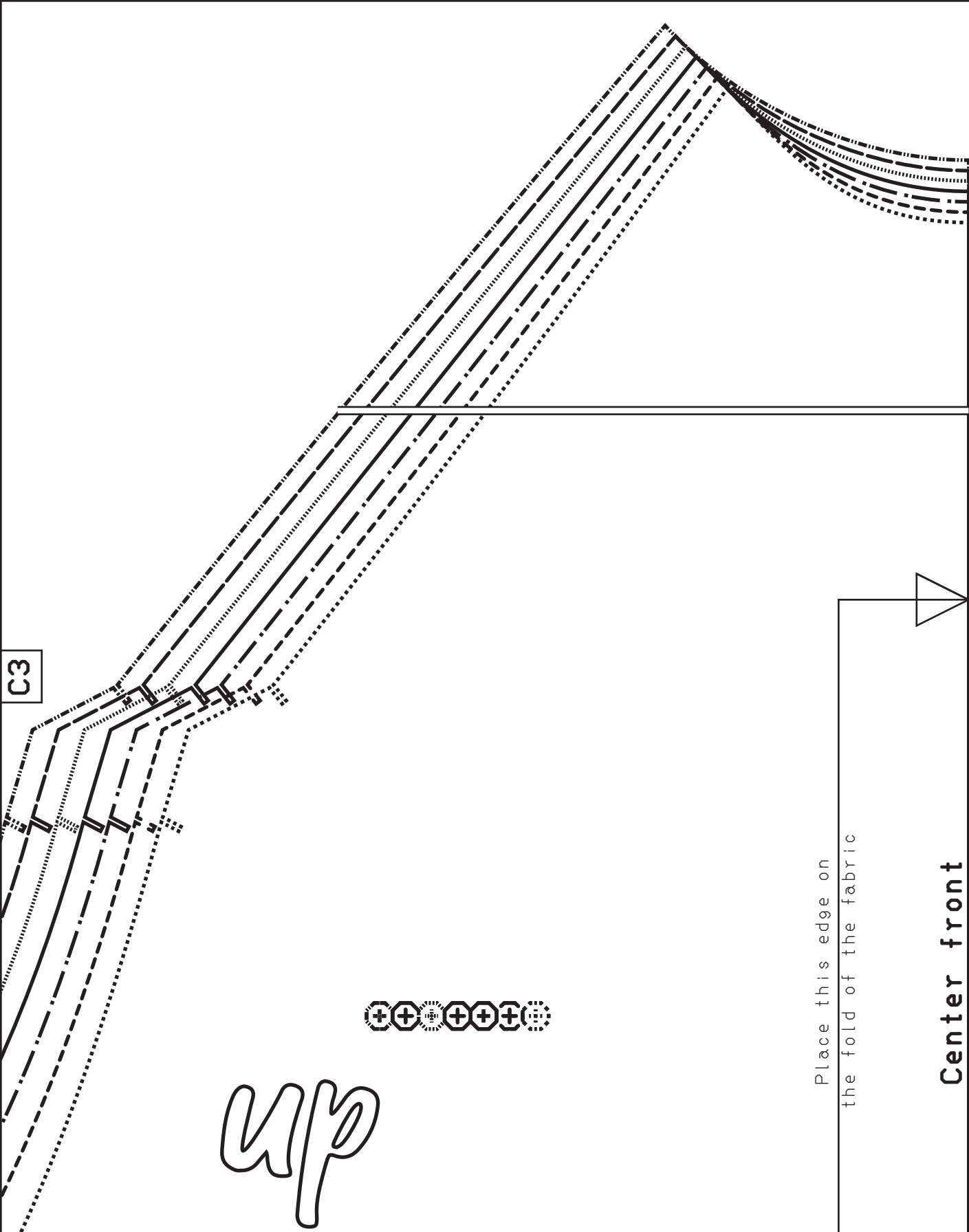
- XL (dash-dot-dot-dot)
- L - - - - - (dashed)
- M/L (dash-dot-dot-dot)
- M (dotted)
- S/M (dash-dot-dot-dot)
- S - - - - - (dashed)
- XS (dotted)

B3

B3

C3





C3

up



Place this edge on
the fold of the fabric

Center front

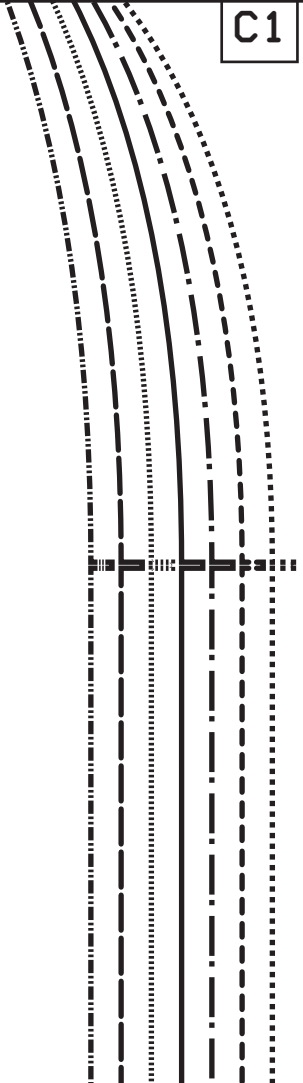
unfetteredpatterns.blog

Model #UP1064

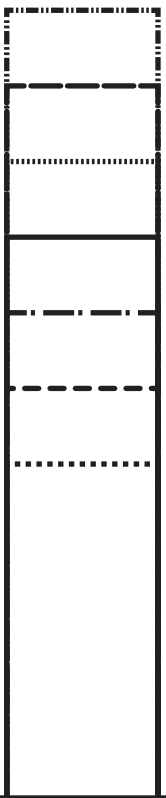
Sizes XS-XL

C4

C1



D1



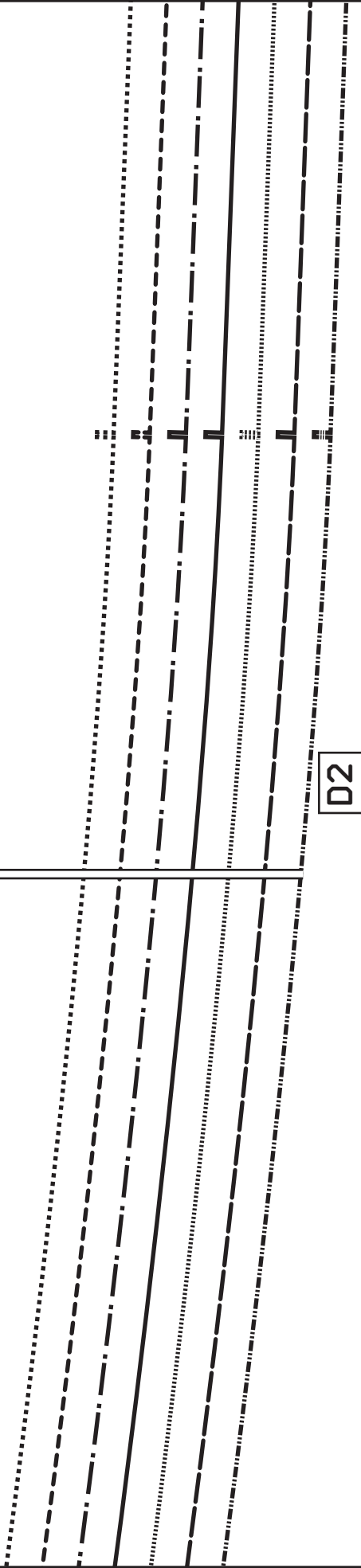
D1

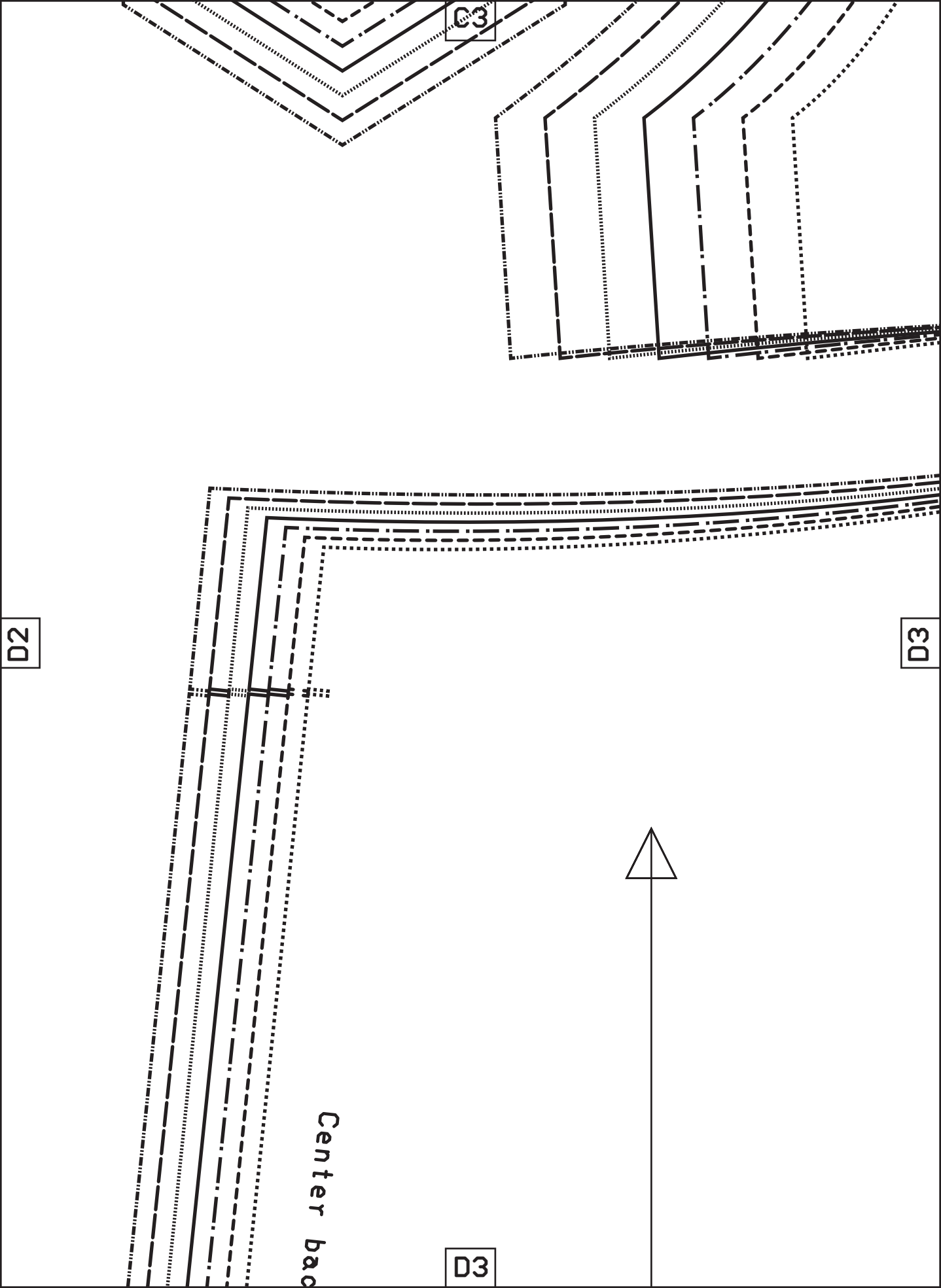
C2

D1

D2

D2

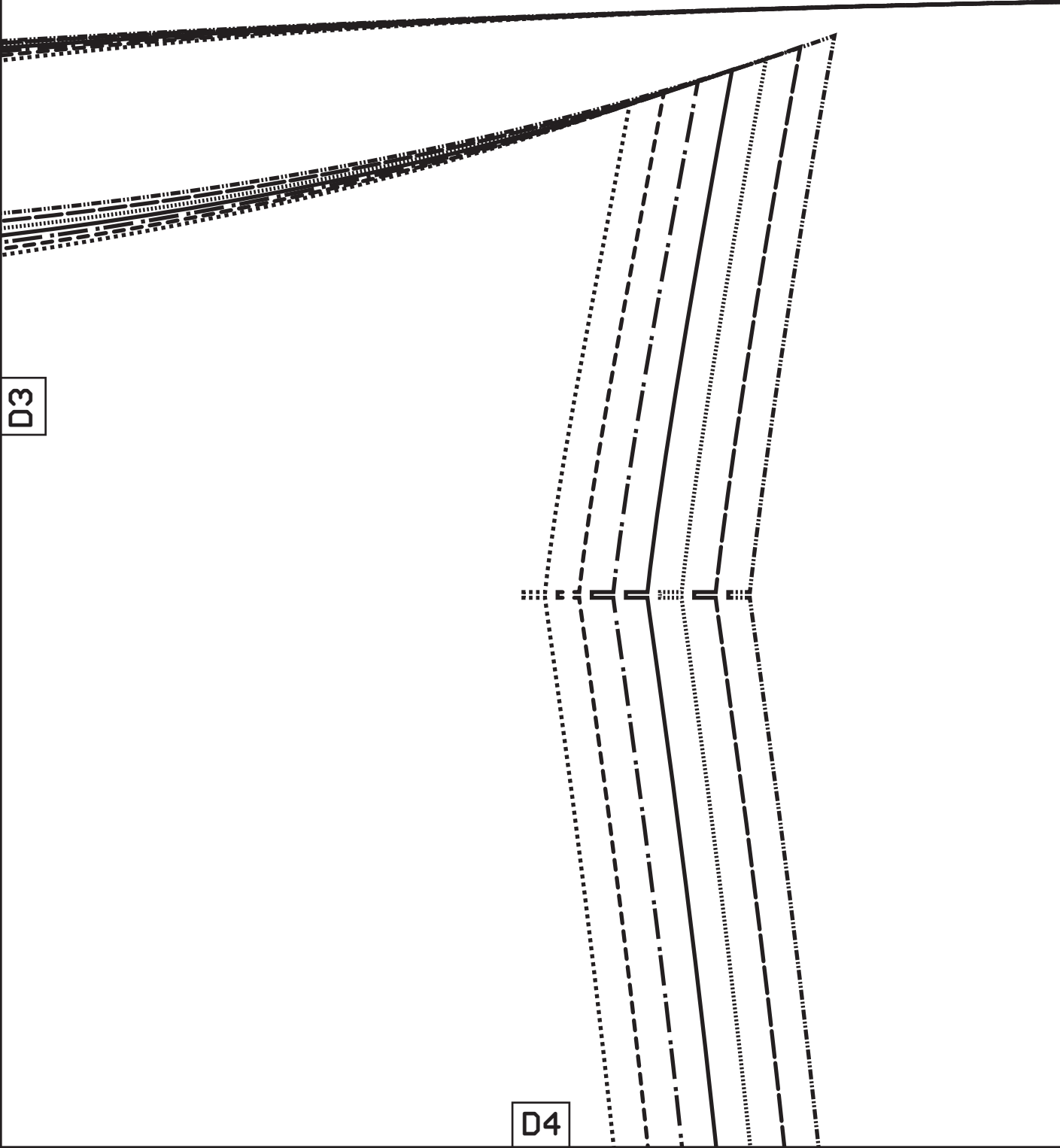




Front facing
Cut 1x fabric

C4

Hem and seam allowances included



D3

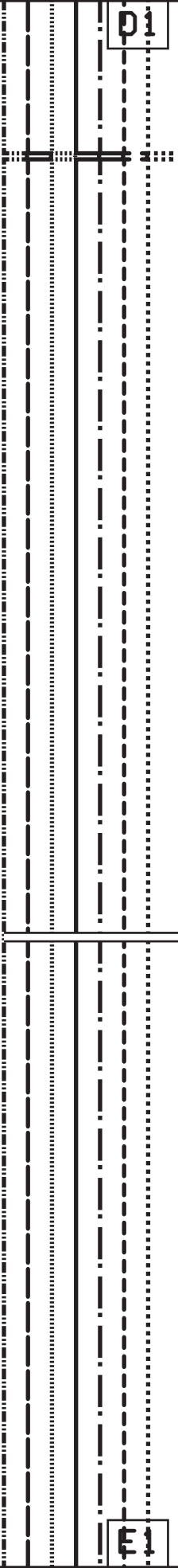
D4

Center front



unfetteredpatterns.blog
Model #UP1064
Sizes XS-XL

Back top elastic
Cut 1x knitted elastic
1 cm (3/8") wide



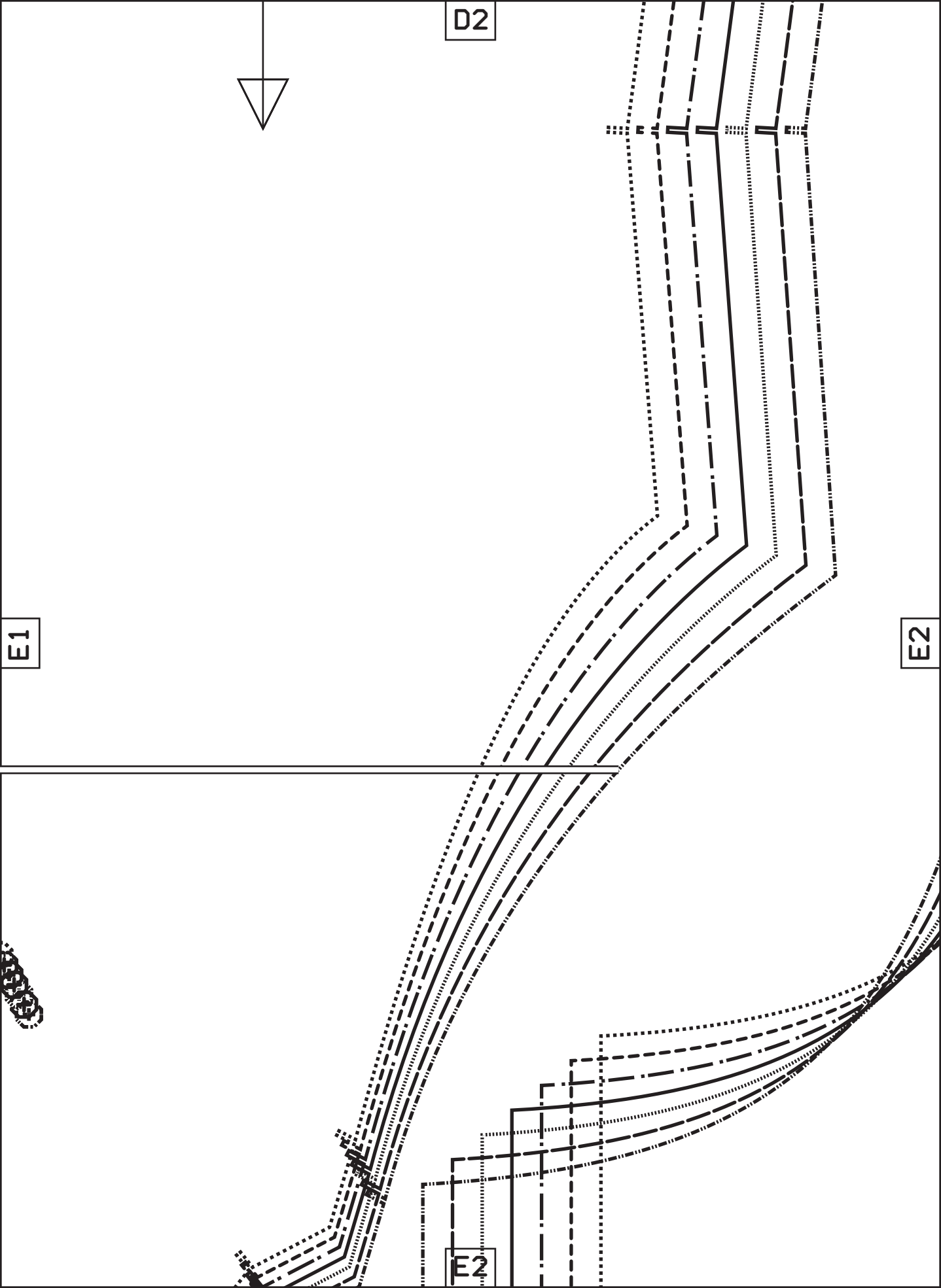
D2



E1

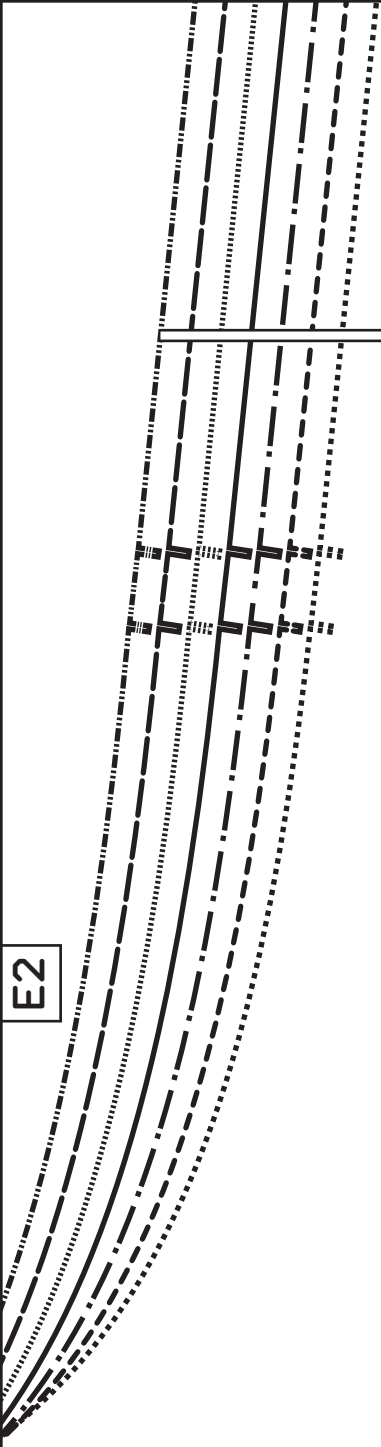
E2

E2



D3

κ



E2

E3

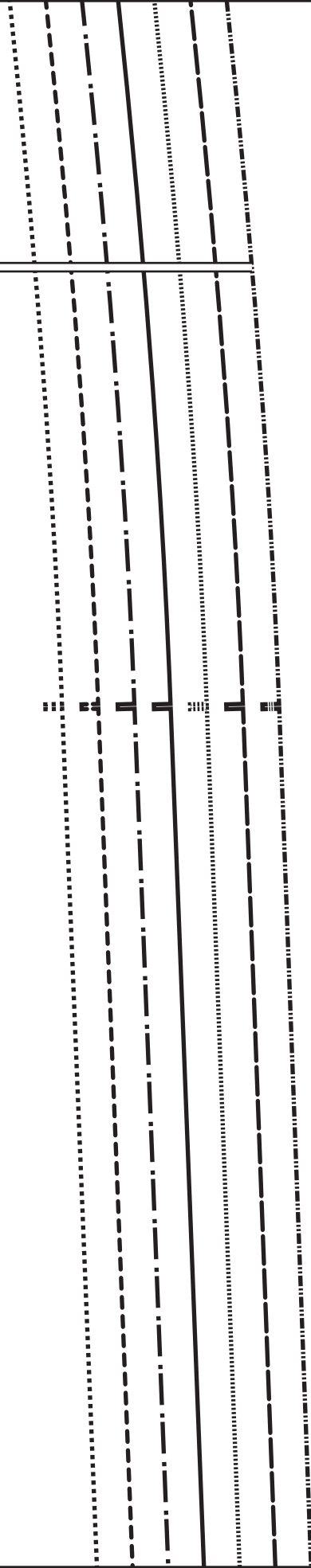
E3

UP

D4

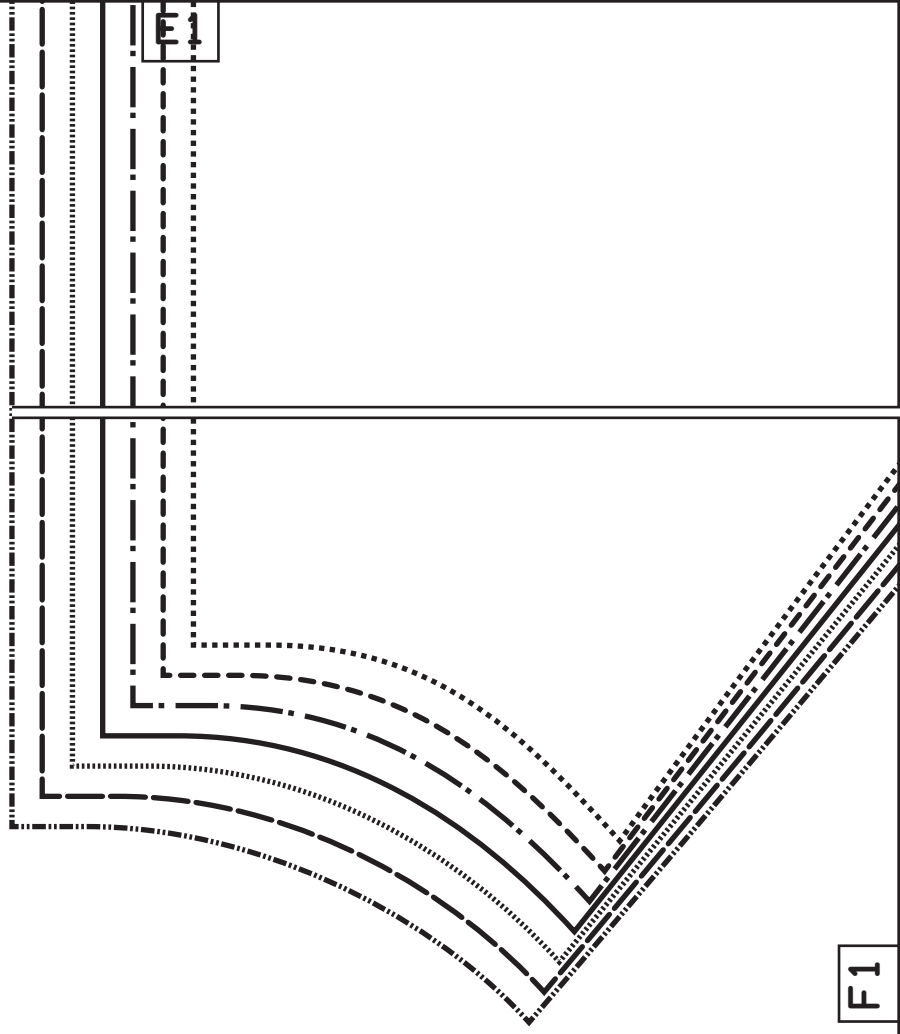
E3

E4

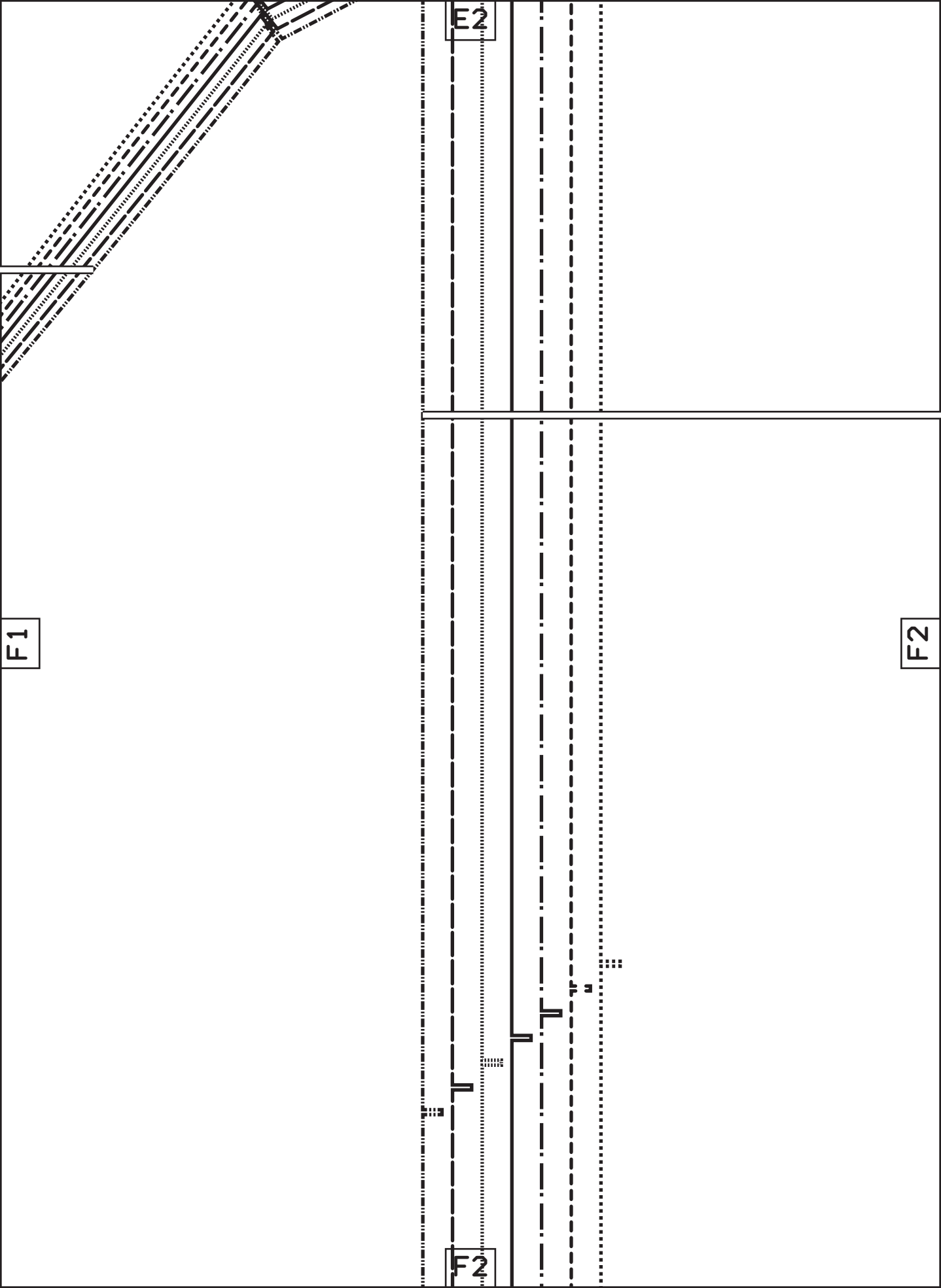




F1



F1



E2

F1

F2

F2

E3

unfetteredp

Model #UP10

Sizes XS-XL

Back

Cut 2x fabr

**Hem and s

F2

Grainline

F3

F3

E4

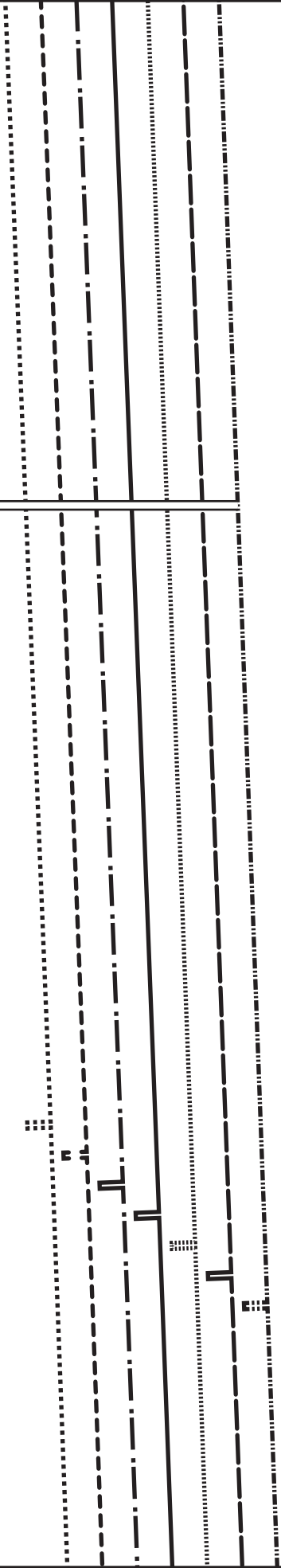
patterns.blog
64

ic

eam allowances included!xx

F3

F4



F2

G2

G2

SIZE KEY

F3

XL

L

M/L

M

S/M

S

XS

PATTERN SYMBOLS

NOTCHES



ADJUSTMENT LINE



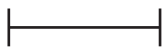
MARKING



BUTTON



BUTTONHOLE



G2

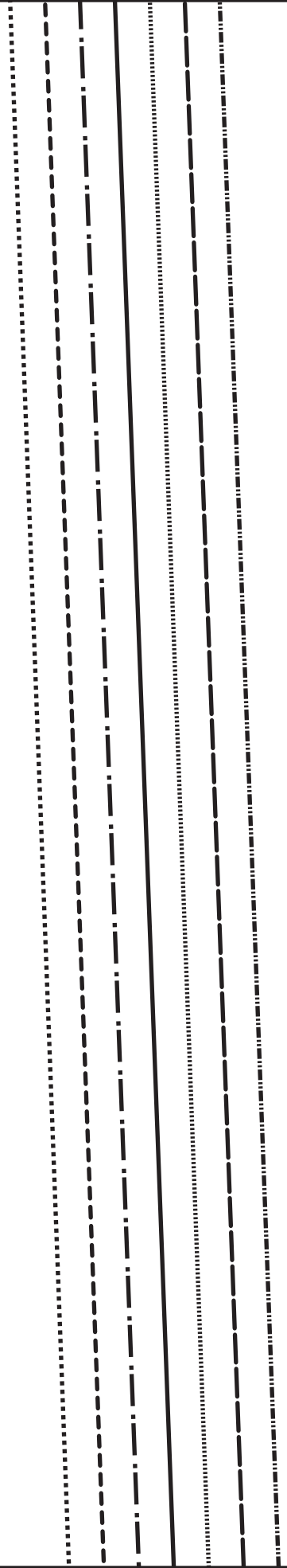
G3

G3

F4

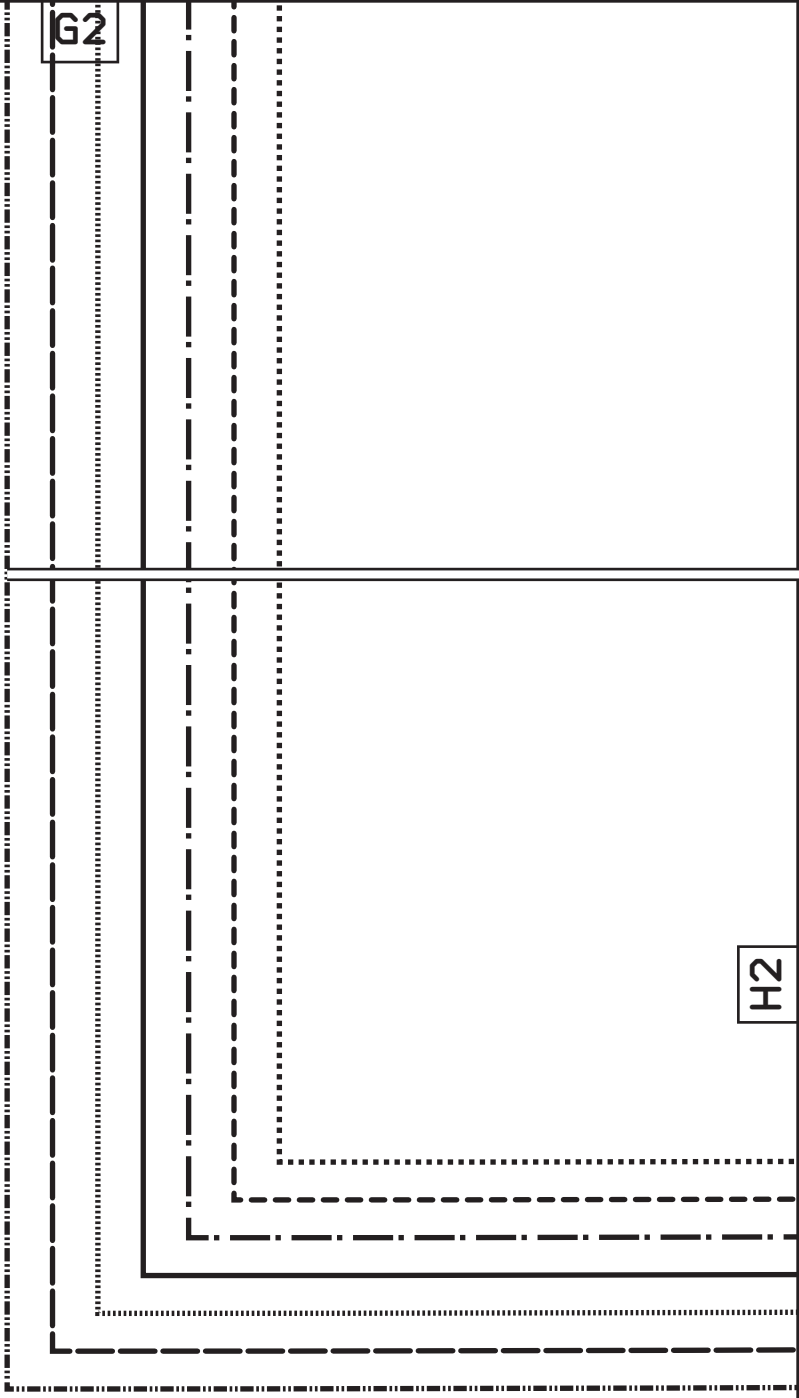
G3

G4



G2

H2

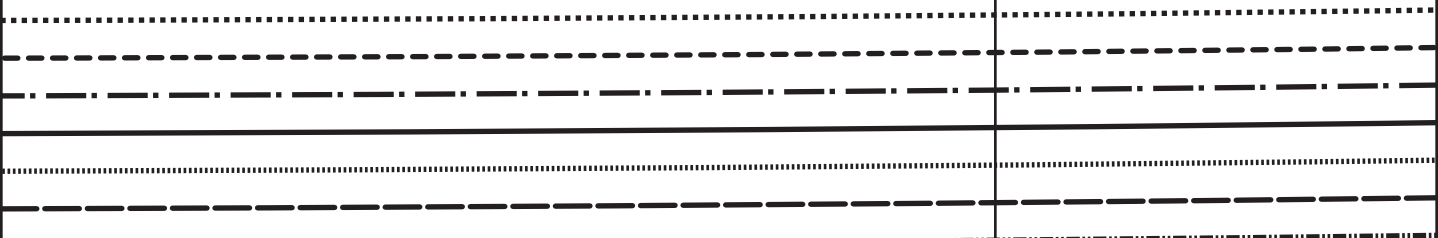


G3

H2

Hem allowance
5 cm (2")

H3



G4

H3

