

Grainline



unfetteredpatterns.blog

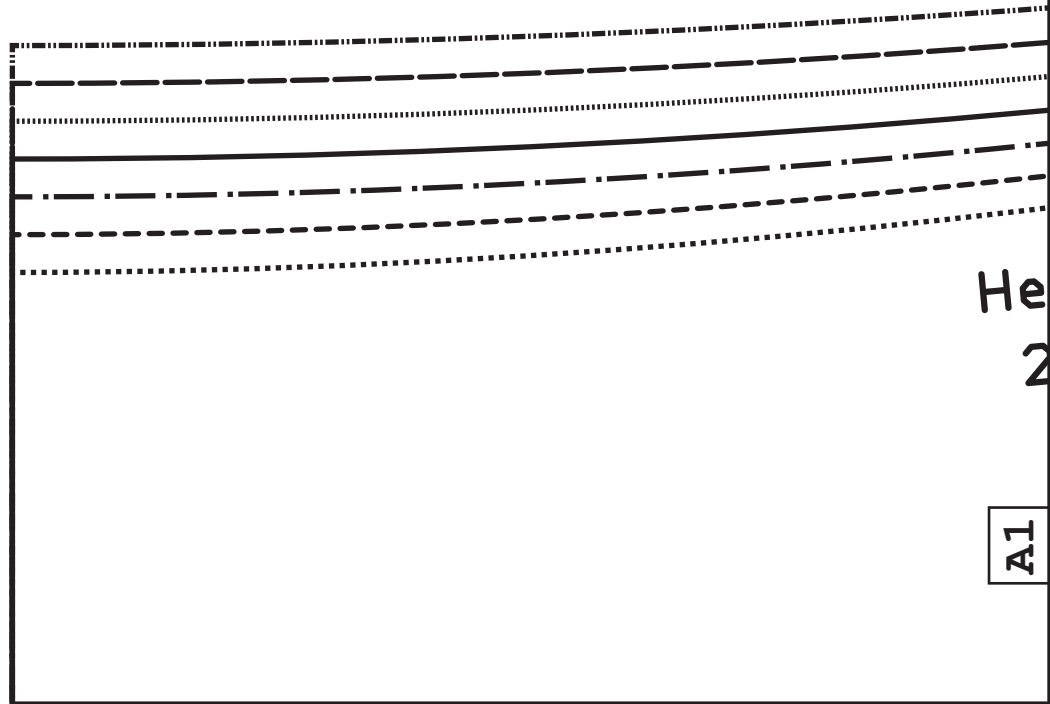
Model #UP1061

Sizes XS-XL

up

Tab

Cut 1x fabric

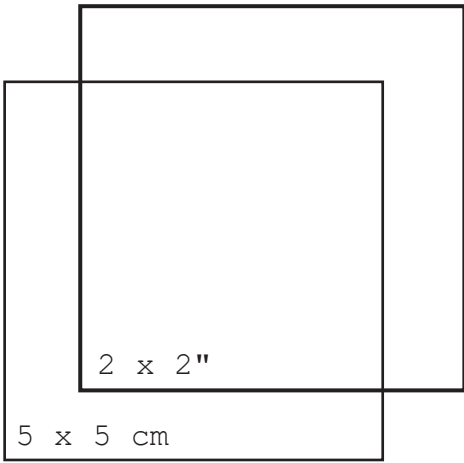


He  
2

A1

center

A1

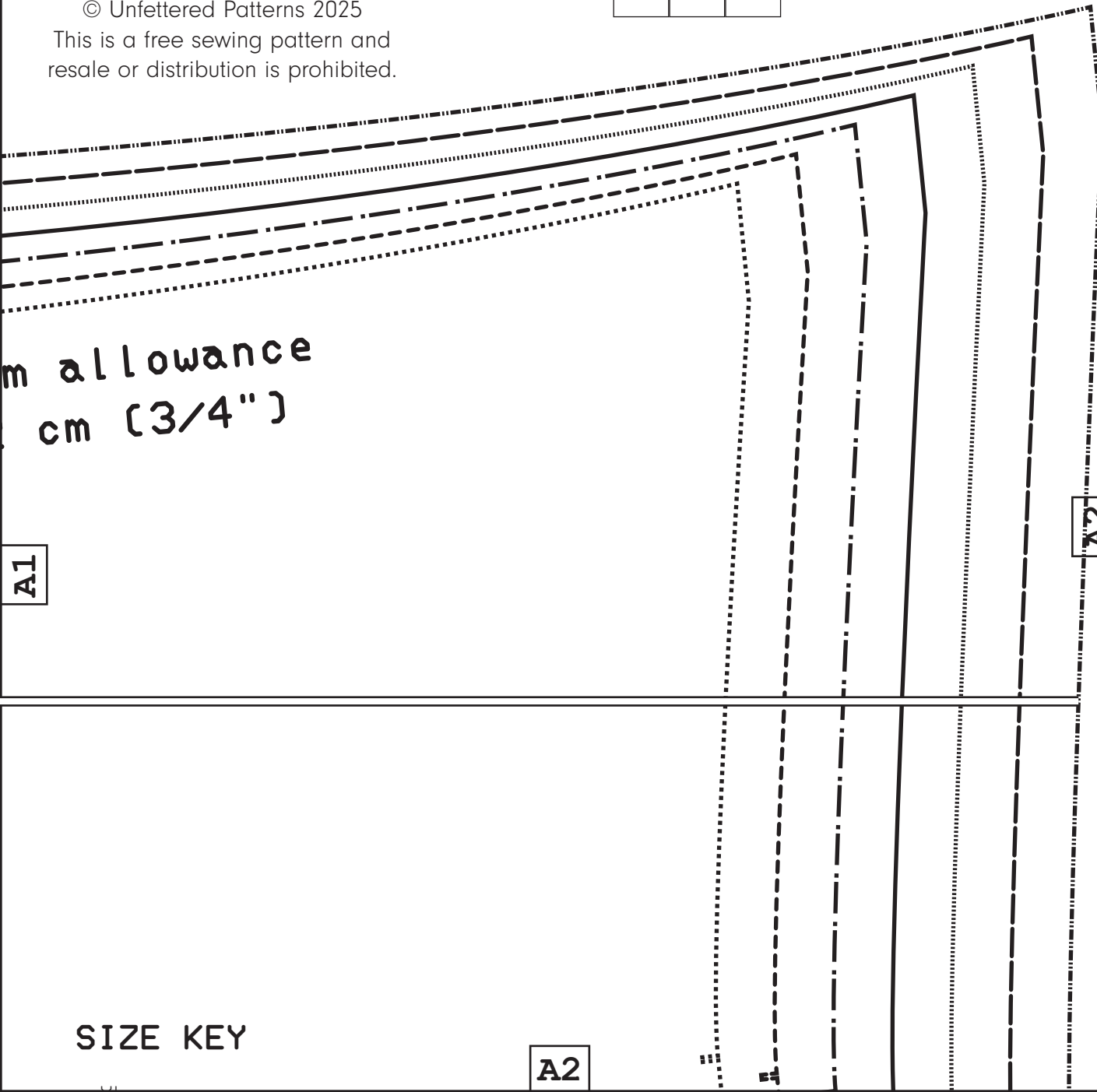


# Tiling layout

A1	A2	A3	A4
B1	B2	B3	B4
C1	C2	C3	C4
	D2	D3	D4

© Unfettered Patterns 2025

This is a free sewing pattern and resale or distribution is prohibited.



seam allowance  
1.5 cm (3/4")

A1

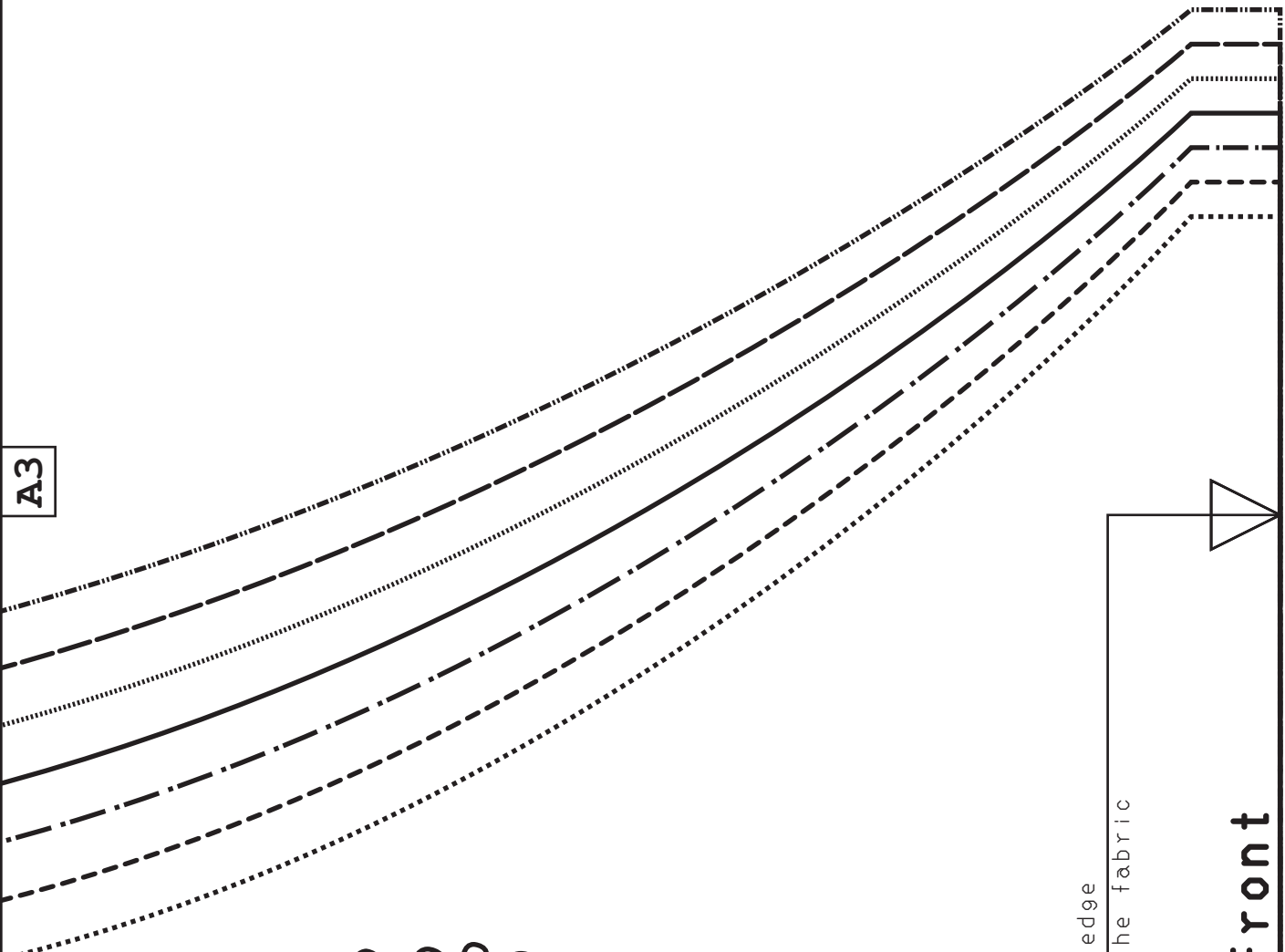
A2

SIZE KEY

A2



A3



up

unfetteredpatterns.blog  
 Model #UP1061  
 Sizes XS-XL

Front facing  
 Cut 1x fabric

\*\*Hem and seam allowances included!\*\*

Place this edge  
 on the fold of the fabric

center front

A4

unfettered  
Model #  
Sizes XS-XL

*up*

**Strap**  
Cut 1x



Grainline

**back**



**A1**

*up*

unfetteredpatterns.com **B1**

Model #UP1061

Sizes XS-XL

**Back**

Cut 2x fabric

\*\*Hem and seam allowance

Grainline

**B1**

- XL
- L
- M/L
- M
- S/M
- S
- XS

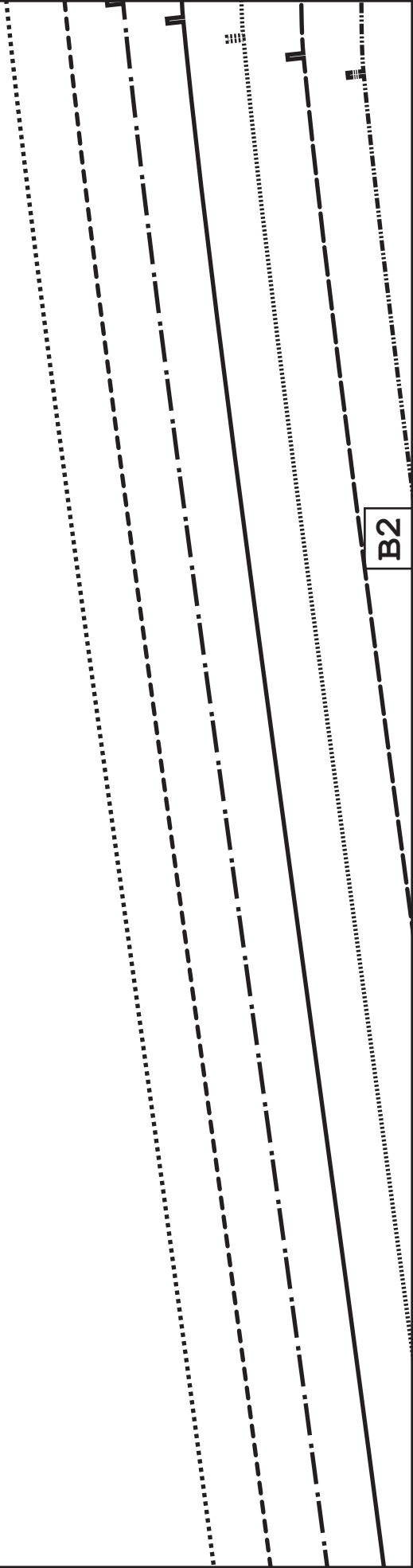
A2

B1

nces included\*\*

B2

B2



A3

Blog

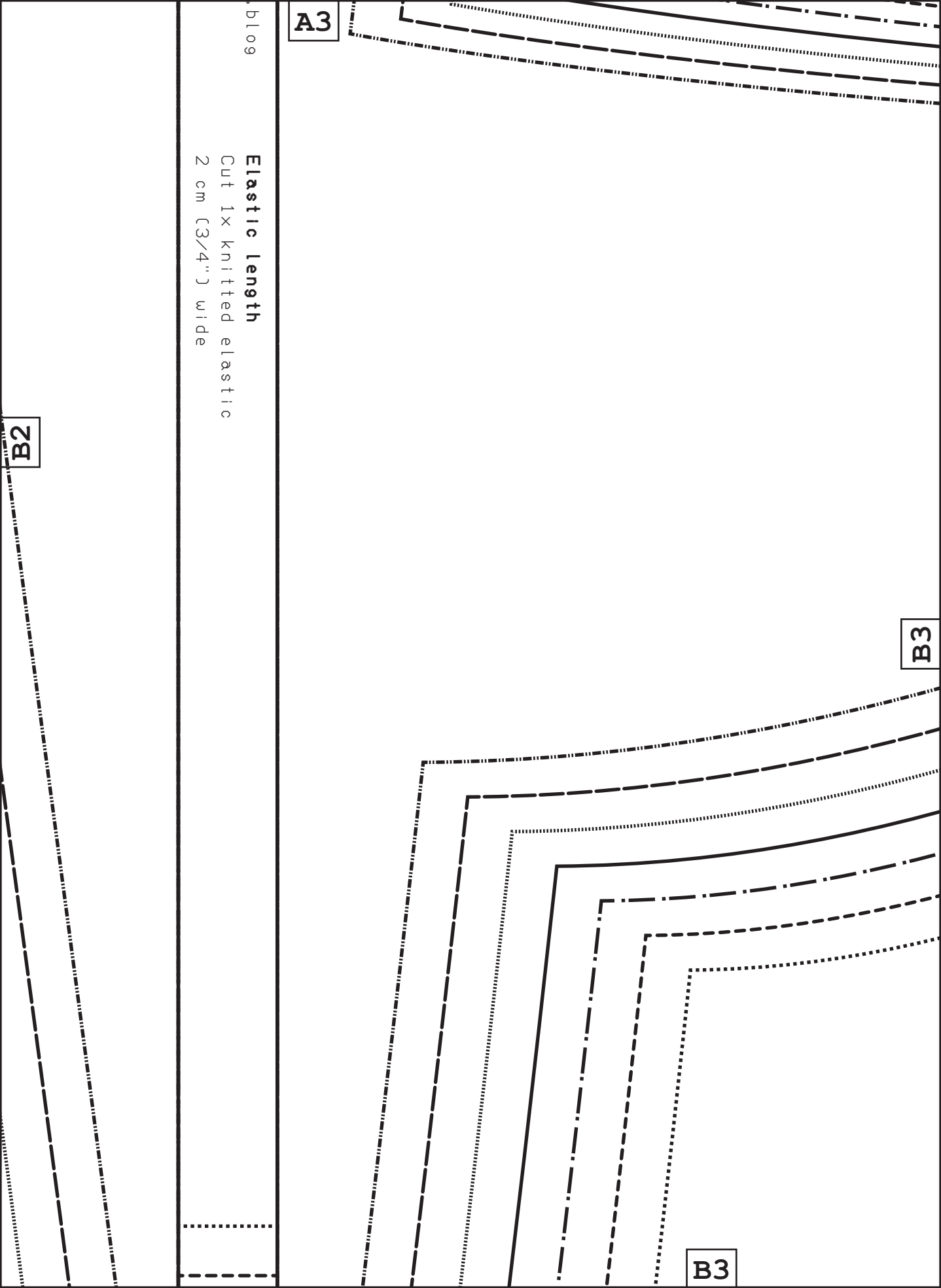
**Elastic length**

Cut 1x knitted elastic  
2 cm (3/4") wide

B3

B3

B2

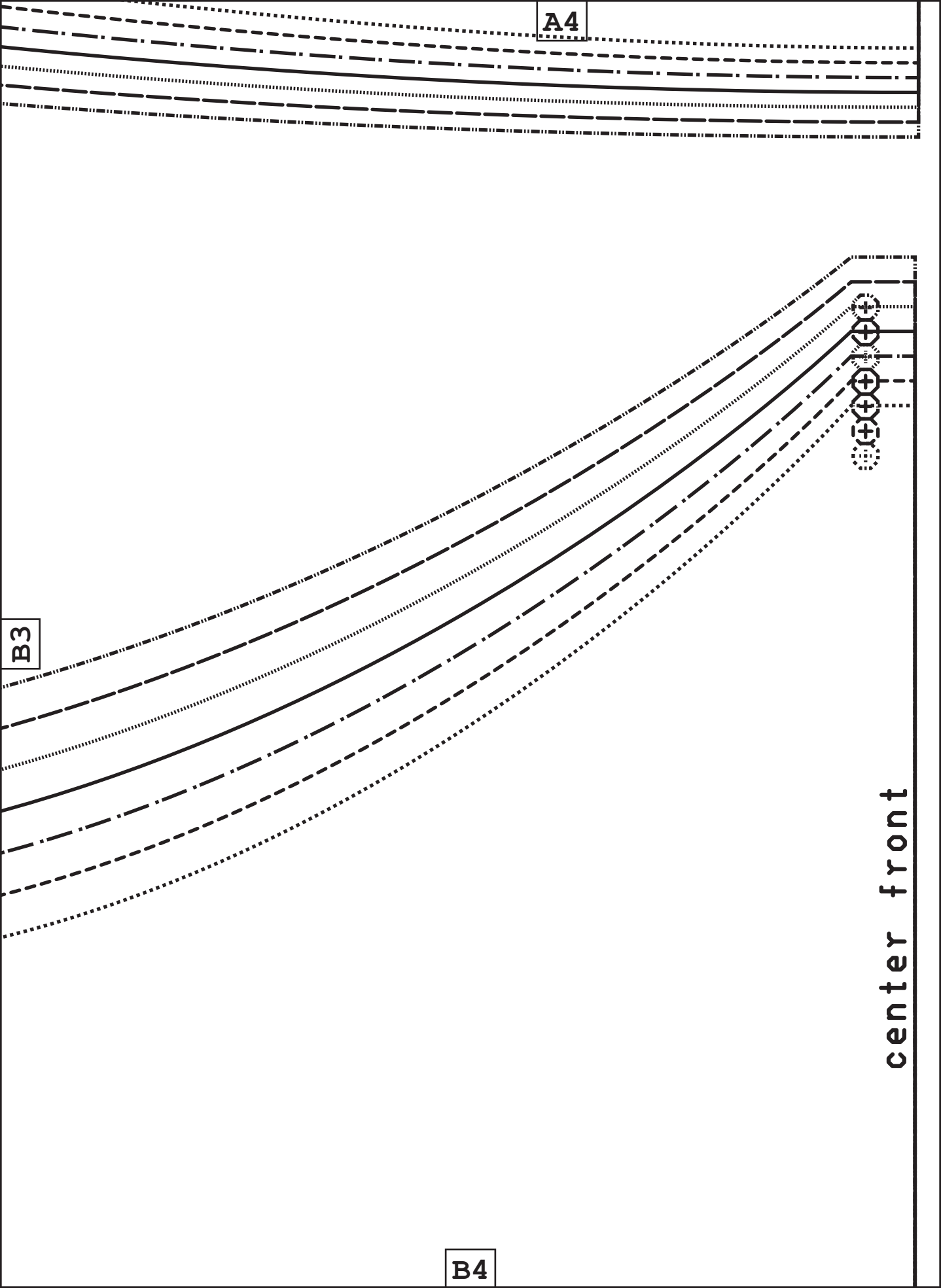


A4

B3

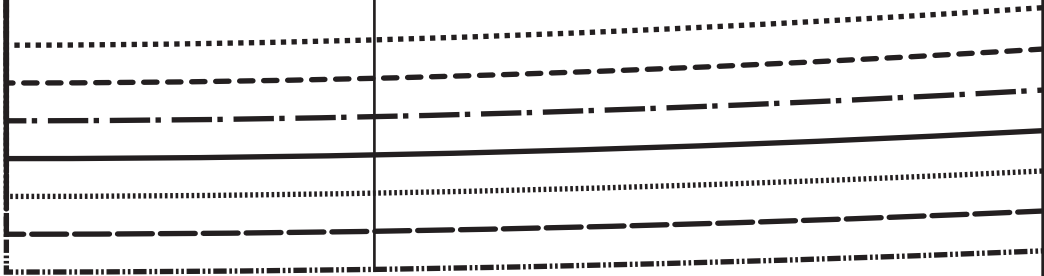
B4

center front



B1

C1



B2

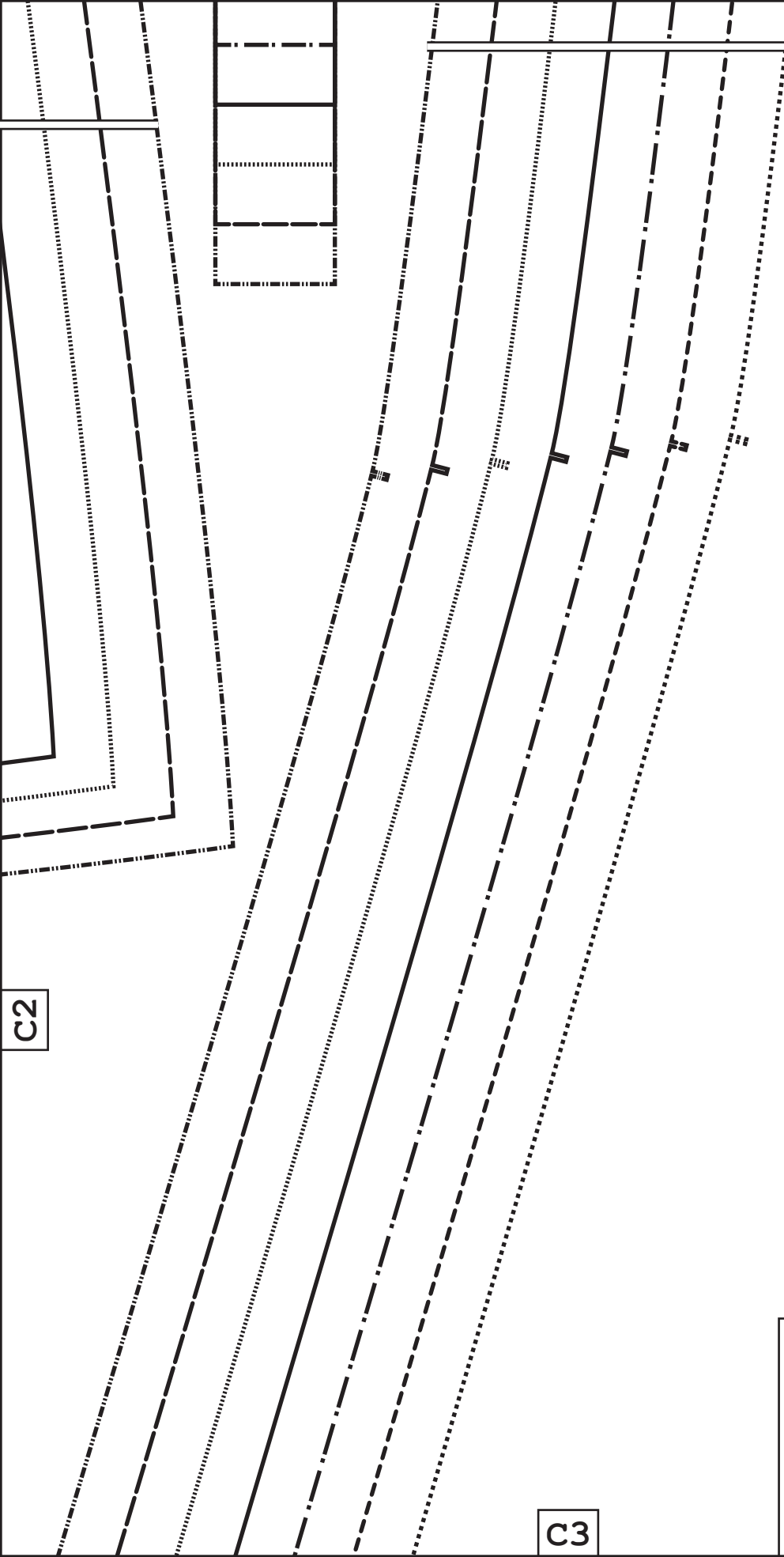
Hem allowance  
2 cm (3/4")

C1

C2

C2

B3

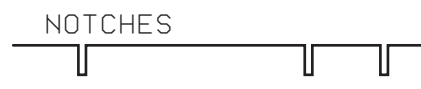


C3

### SIZE KEY

XL	
L	
M/L	
M	
S/M	
S	
XS	

### PATTERN SYMBOLS



C3

C2



unfetteredpatterns.blog

Model #UP1061

Sizes XS-XL

**Front**

Cut 1x fabric

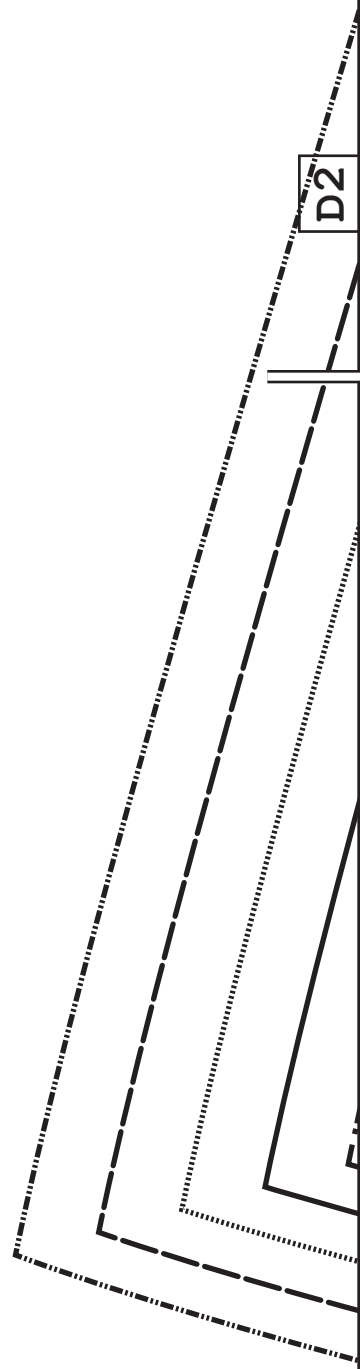
**\*\*Hem and seam allowances included!\*\***

Place this edge  
on the fold of the fabric



C2

D2



C3

MARKING



BUTTON



BUTTONHOLE

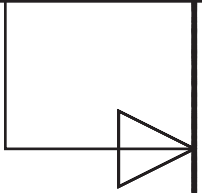


D2

D3

Hem allow  
2 cm (3/4")

C4



D3

ance  
4" )

