

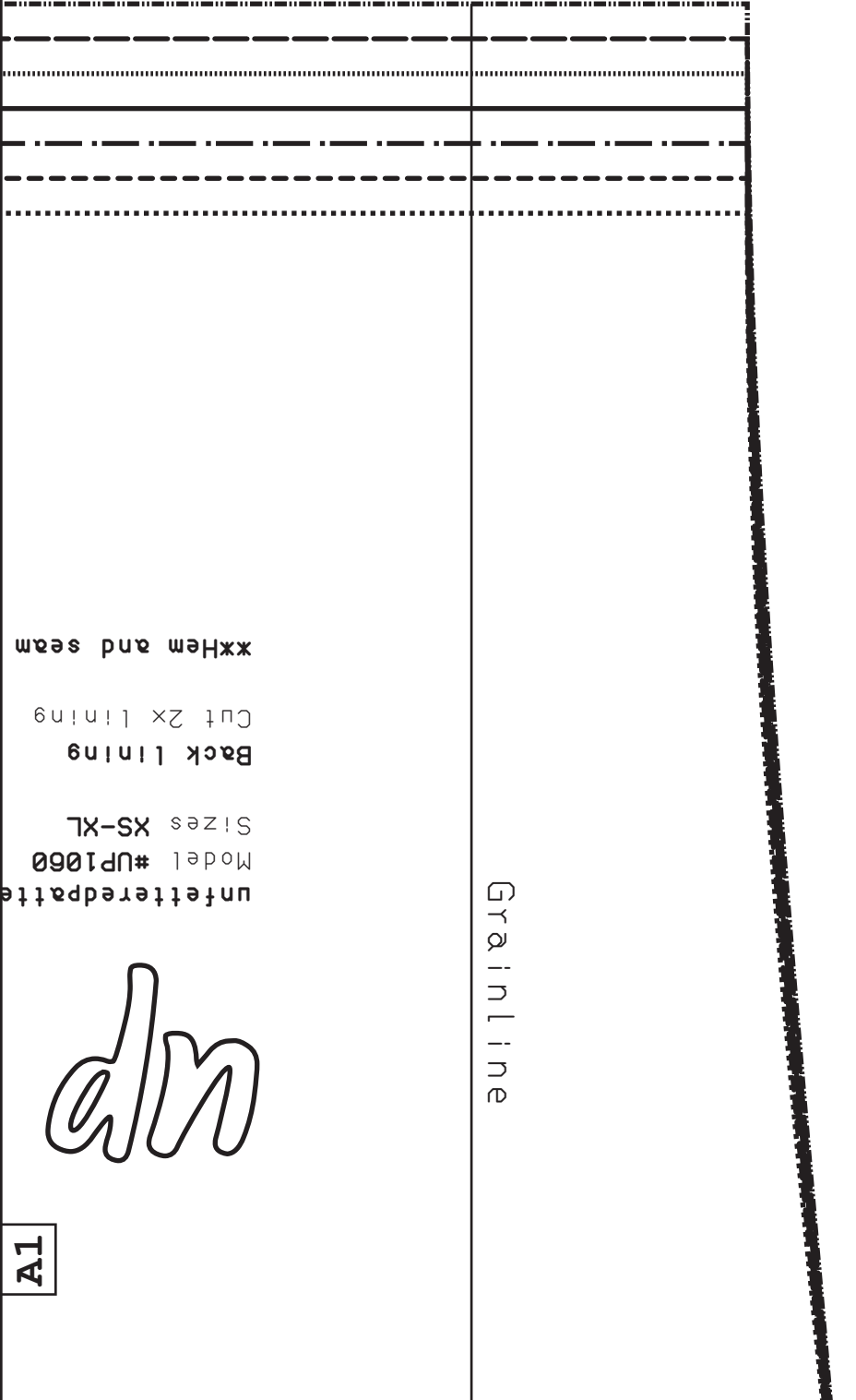
allowances included

ns. blog

A1

A1

- ..... SX
- S
- . - . - . W/S
-



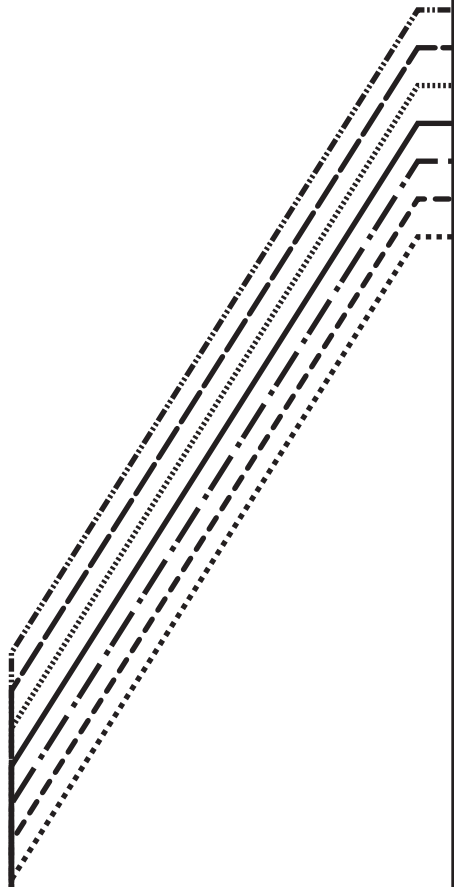
Grainline

unfetteredpatte  
Model #UP1060  
Sizes XS-XL  
Back lining  
Cut 2x lining  
xxHem and seam

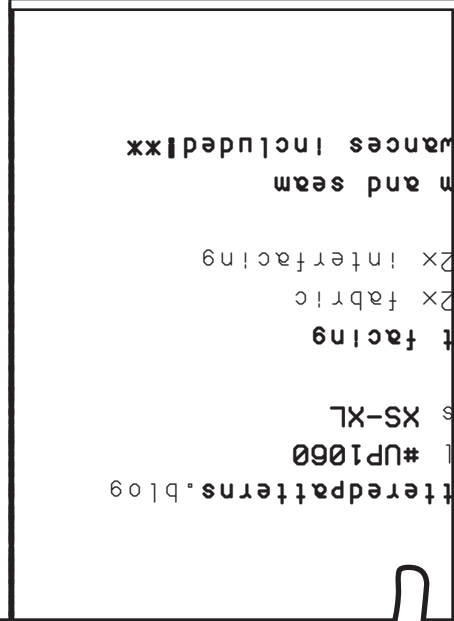
dm

A1

A2

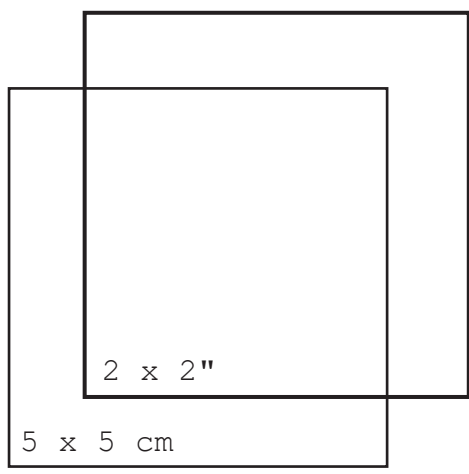
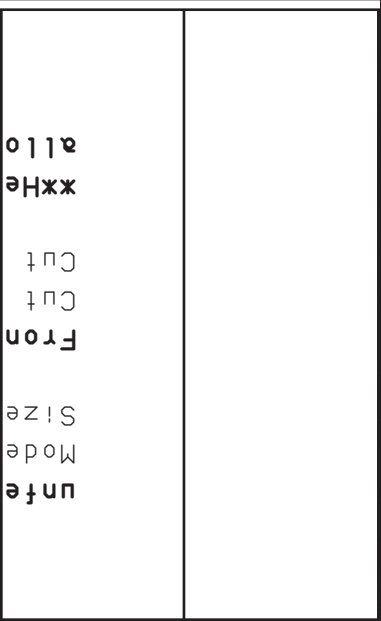
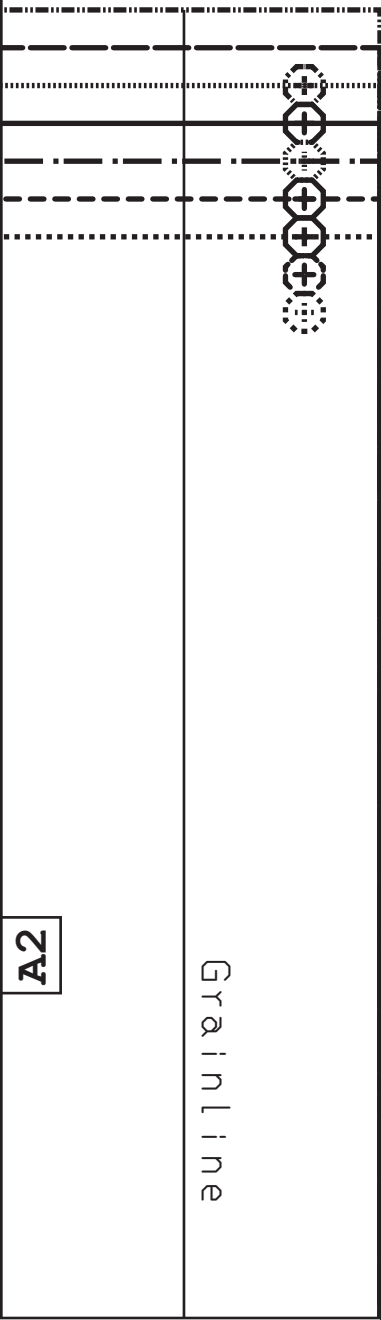


A2



fetteredpatte  
Model #UP1060  
Sizes XS-XL  
t facing  
2x fabric  
2x interfacing  
m and seam  
ances includedxx

A2

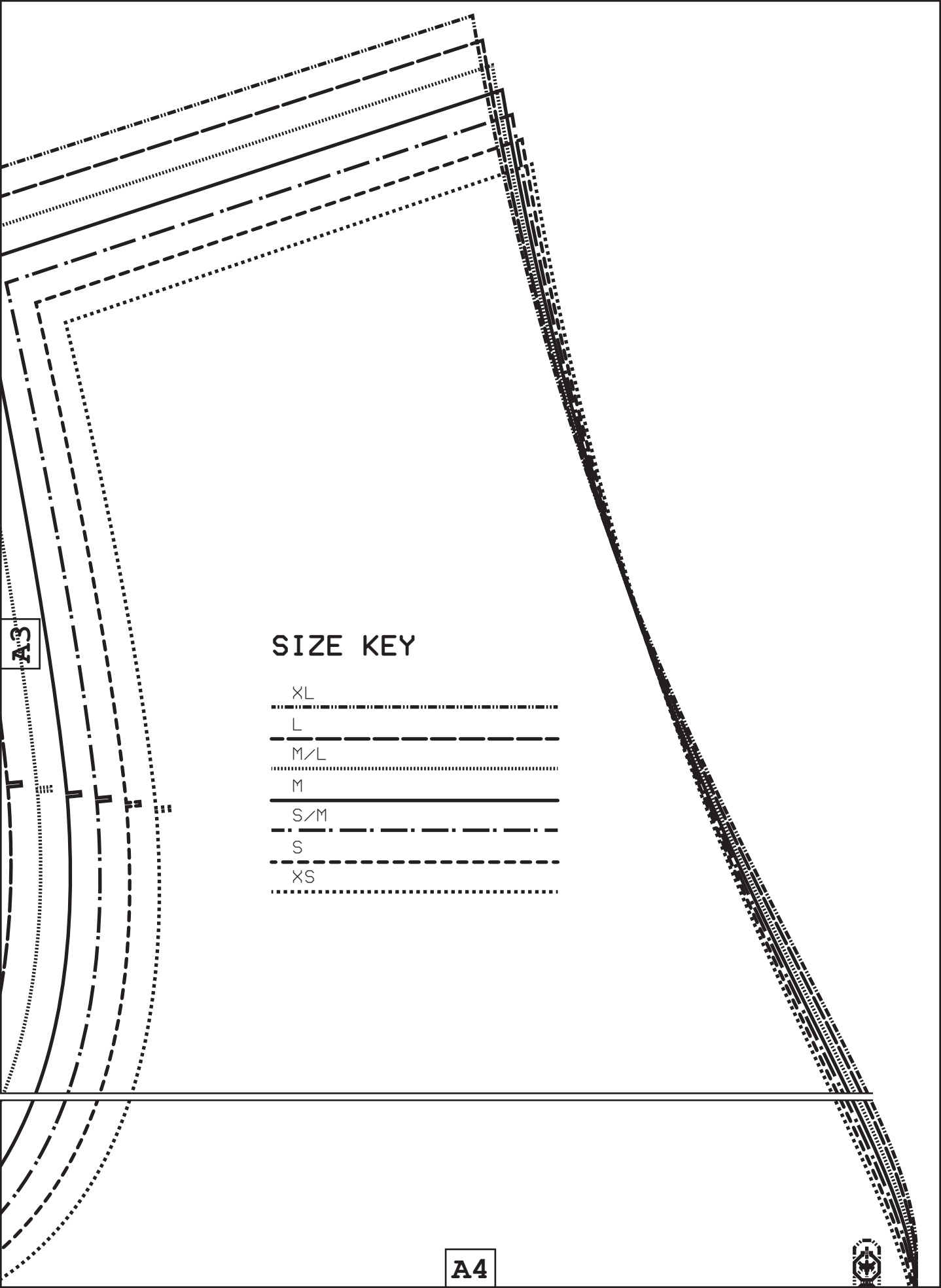


© Unfettered Patterns 2025  
 This is a free sewing pattern and  
 resale or distribution is prohibited.

### Tiling layout

A1	A2	A3	A4
B1	B2	B3	B4
C1	C2	C3	C4
D1	D2	D3	D4





## SIZE KEY

XL



L



M/L



M



S/M

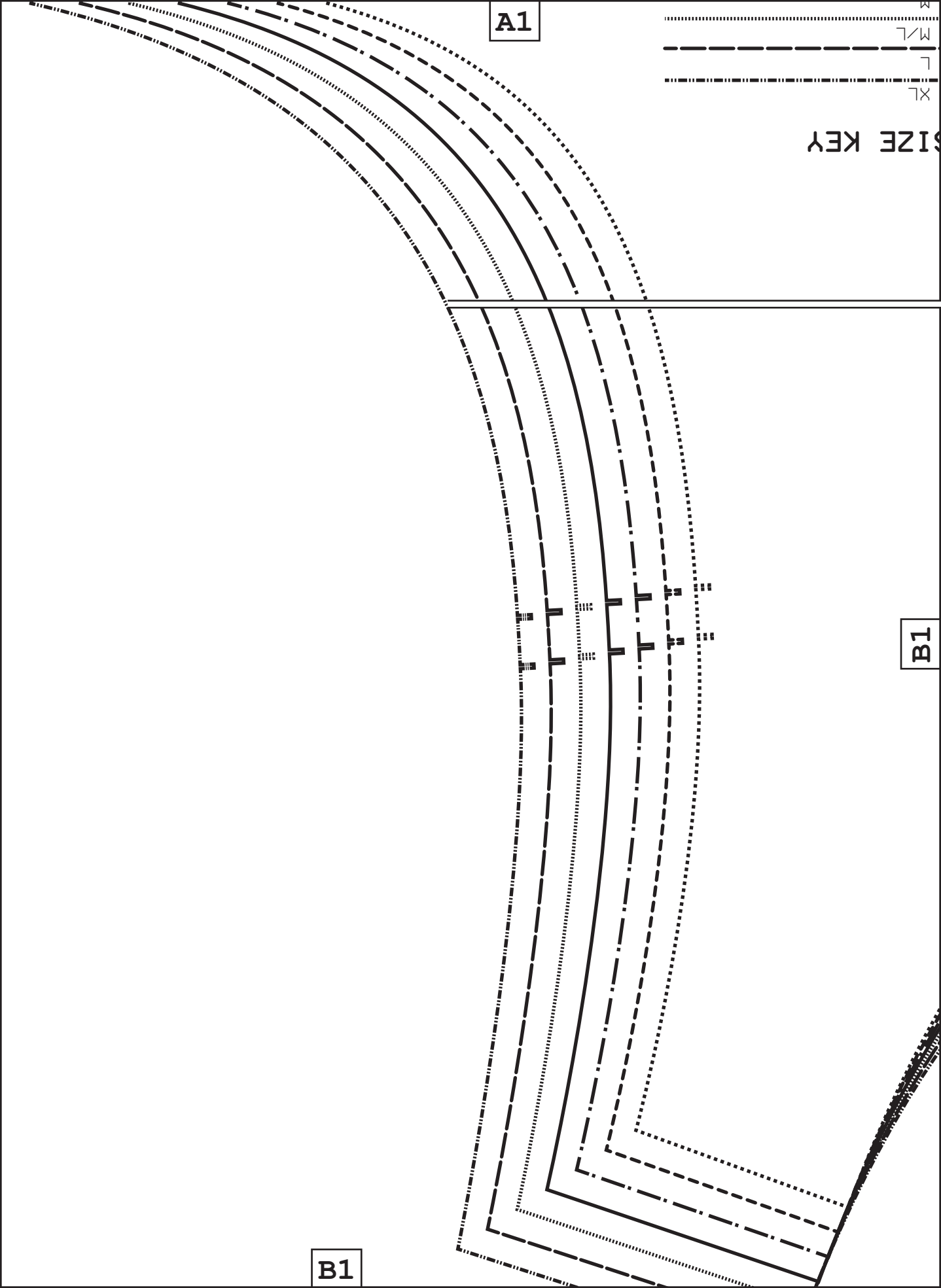


S



XS





A1

XL  
L  
M/L

SIZE KEY

B1

B1

*ds*

Center front

Center back

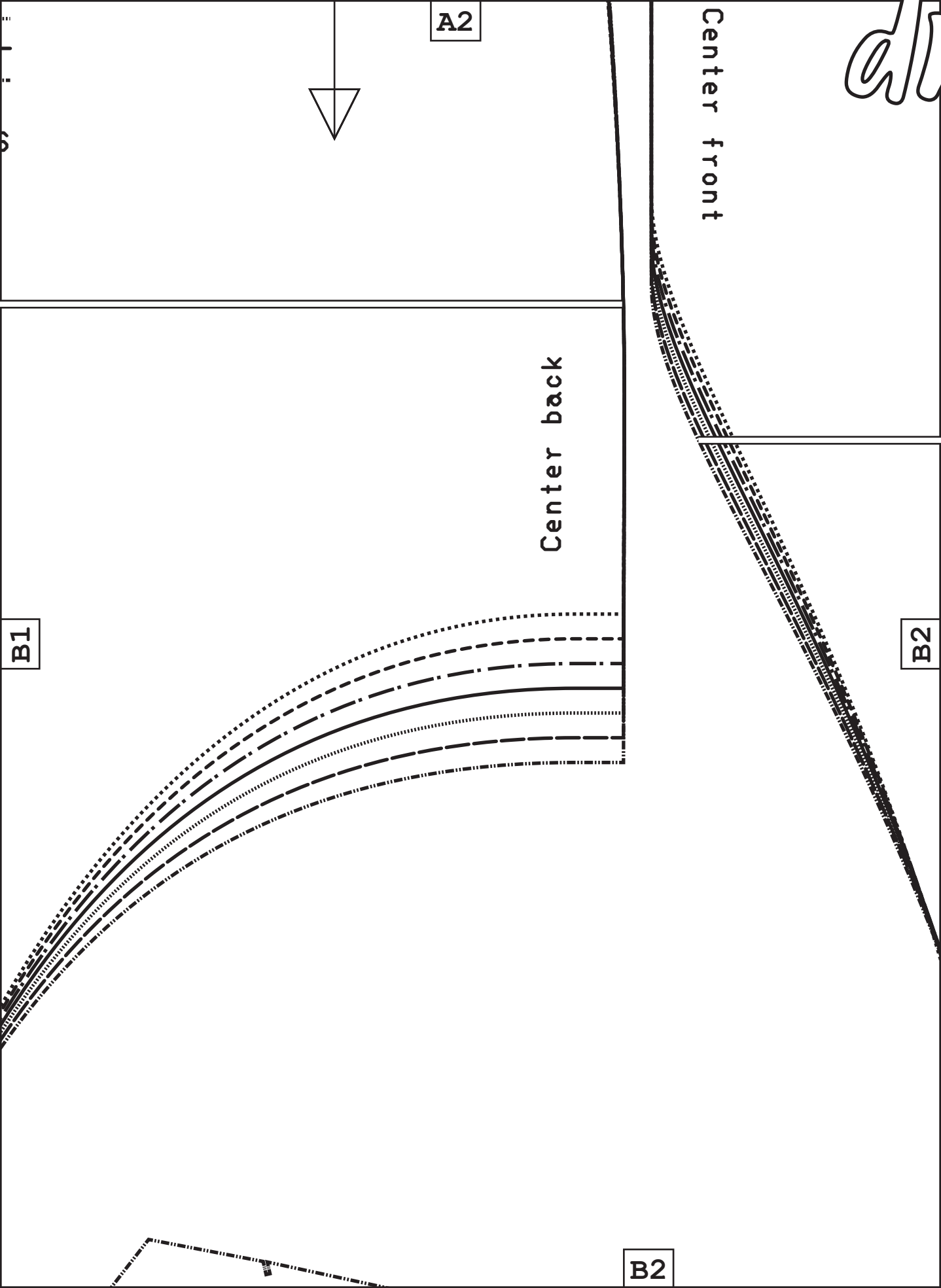
A2

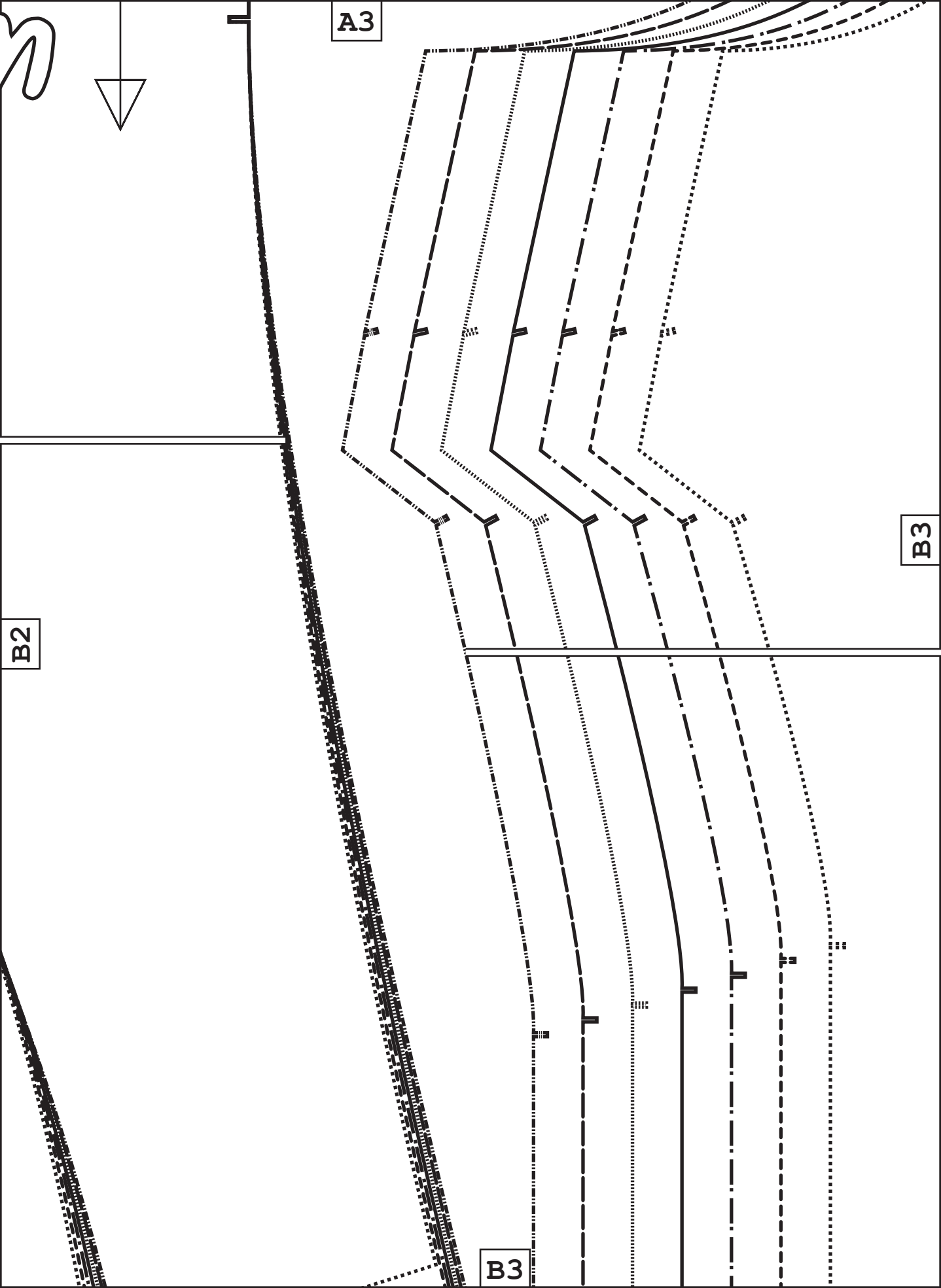


B2

B2

B1





A3

B3

B2

B3

A4



Center front



Grainline



[unfetteredpatterns.blog](http://unfetteredpatterns.blog)

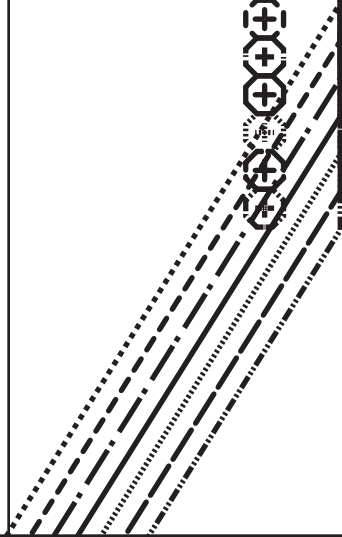
Model #UP1060

Sizes XS-XL

**Front**

Cut 2x fabric

**\*\*Hem and seam allowances included!\*\***



B3

B4

B1

*dm*

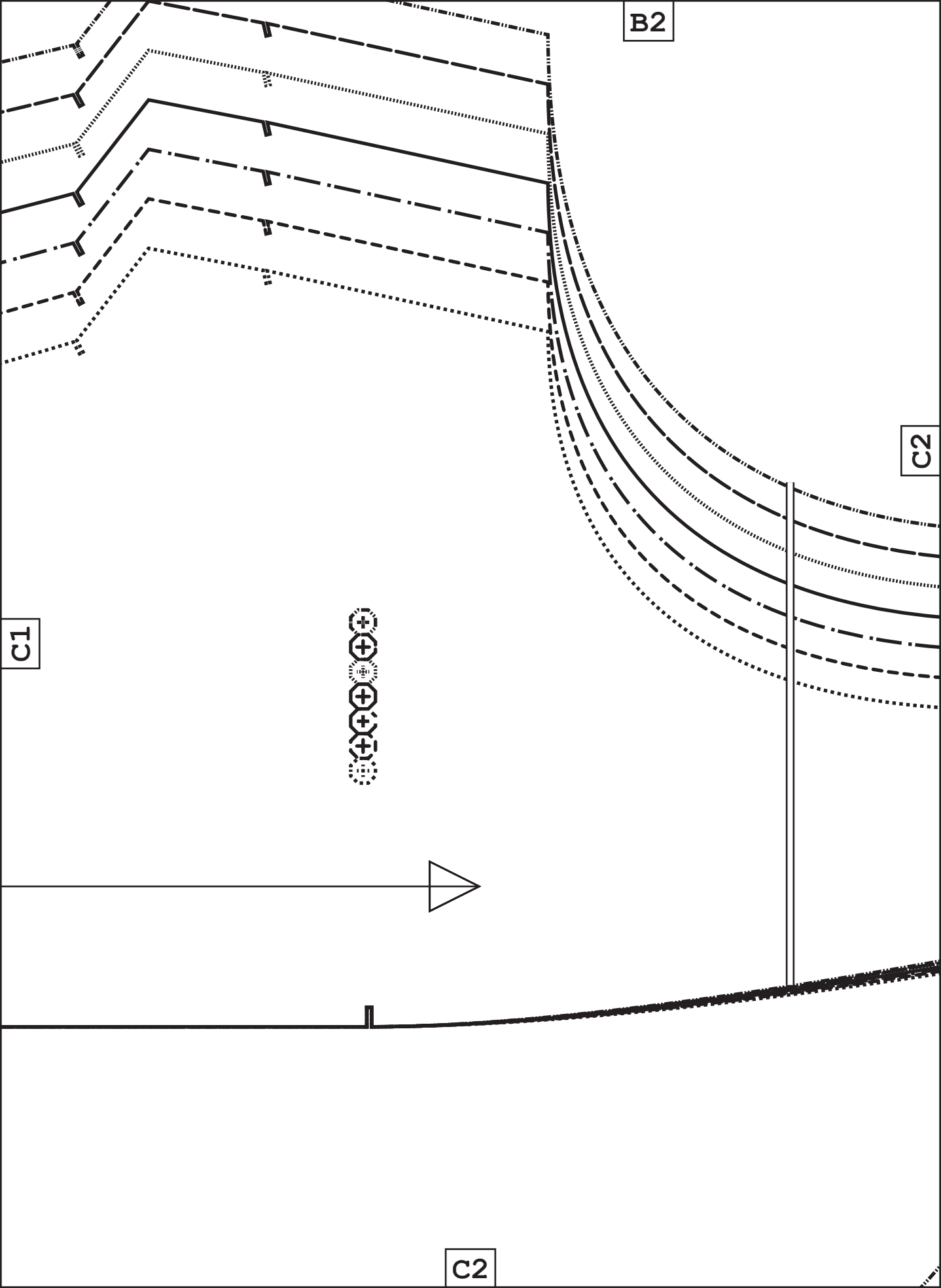
unfetteredpatterns.blog  
Model #UP1060  
Sizes XS-XL  
Front Lining  
Cut 2x Lining  
Hem and seam  
allowances included

Grainline

C1

*up*

C1



B2

C2

C1



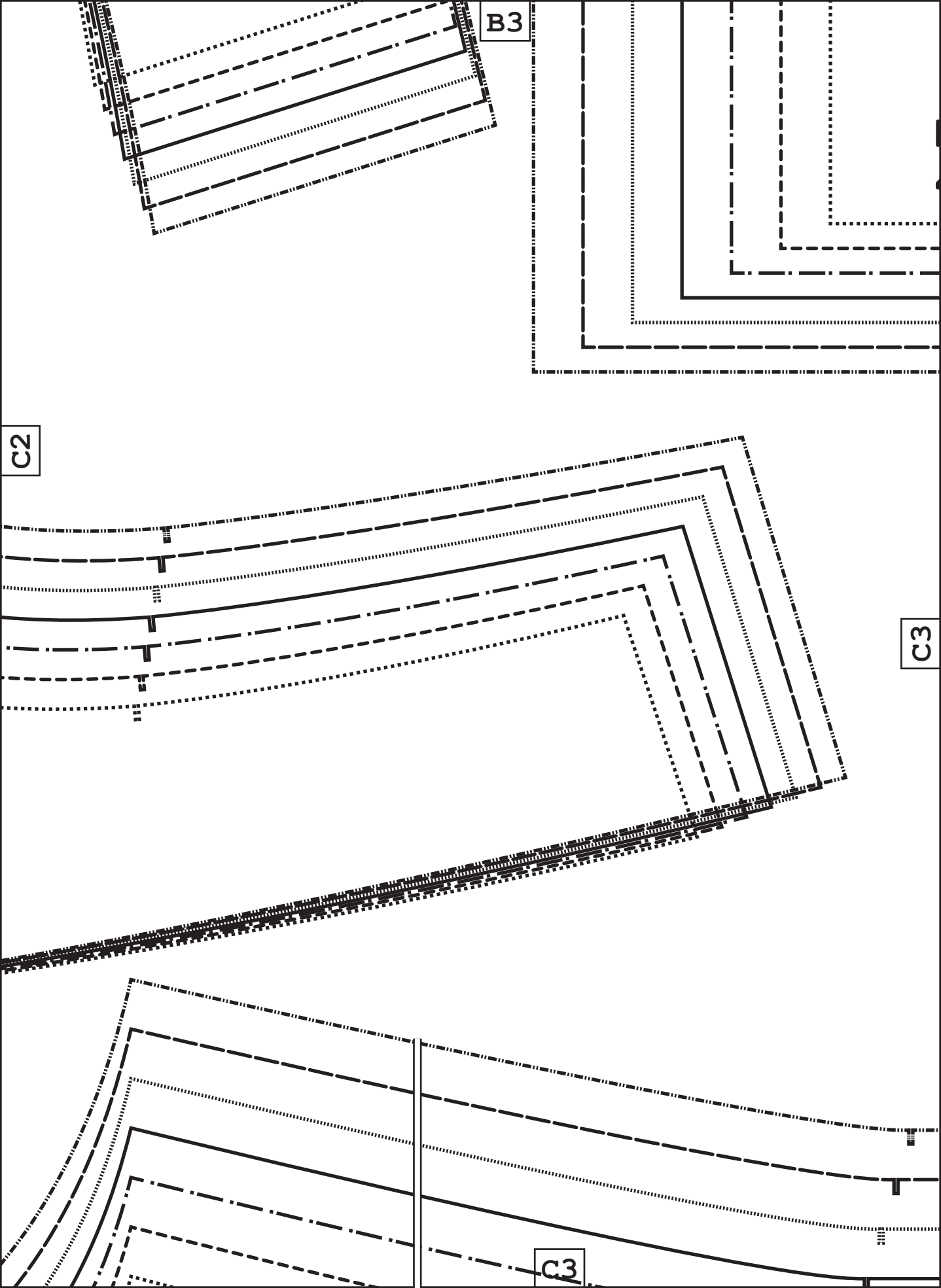
C2

B3

C2

C3

C3



Hem allowance  
4 cm (1 1/2")



B4

C3

unfetteredpatterns.blog

Model #UP1060

Sizes XS-XL

*up*

Ties

xxHem and seam

Cut 6x fabric

allowances included

C4

C1

unfetteredpatterns.blog

Model #UP1060

Sizes XS-XL

**Back yoke**

Cut 1x fabric

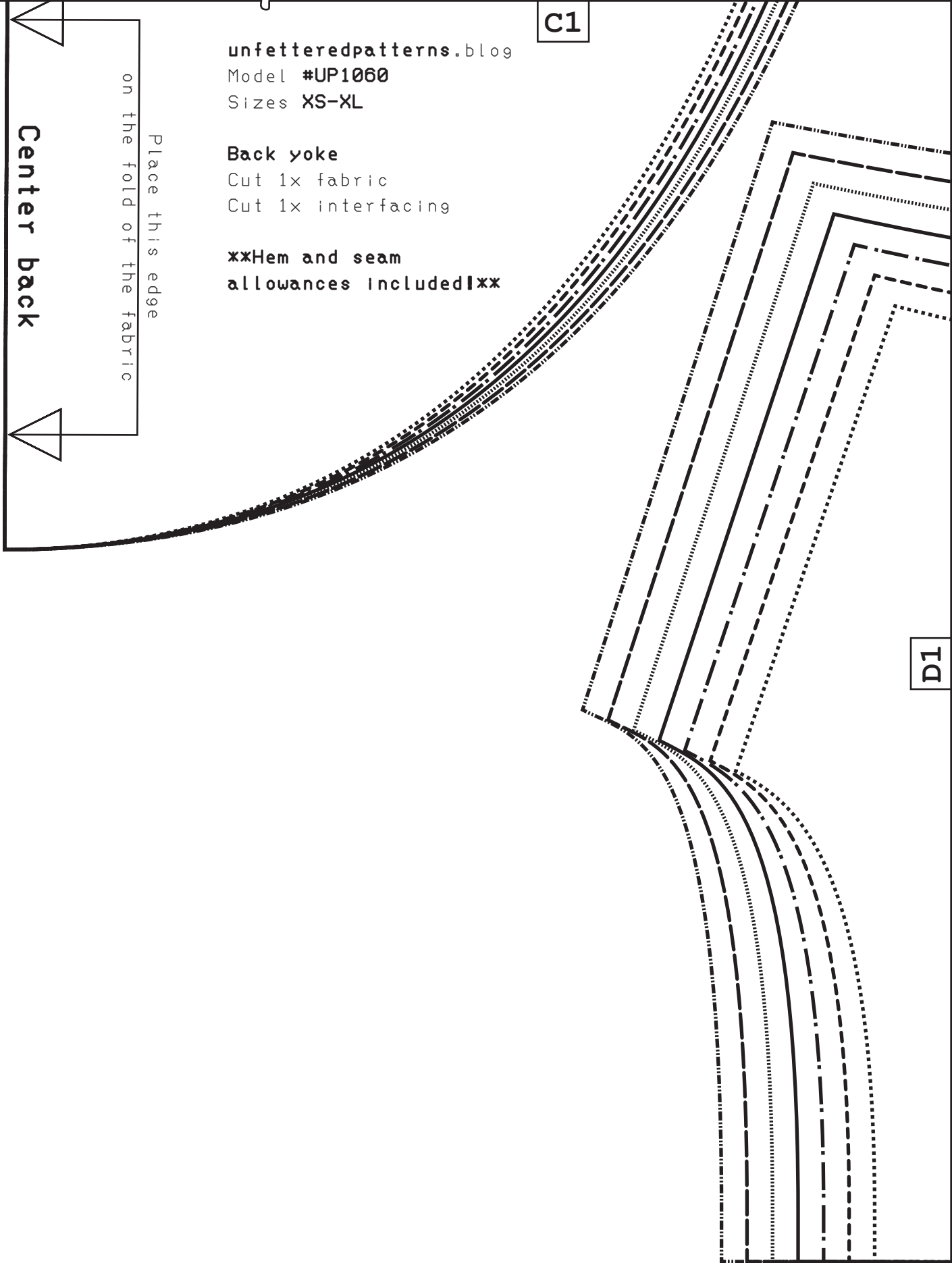
Cut 1x interfacing

**\*\*Hem and seam allowances included!\*\***

Place this edge  
on the fold of the fabric

Center back

D1



C2

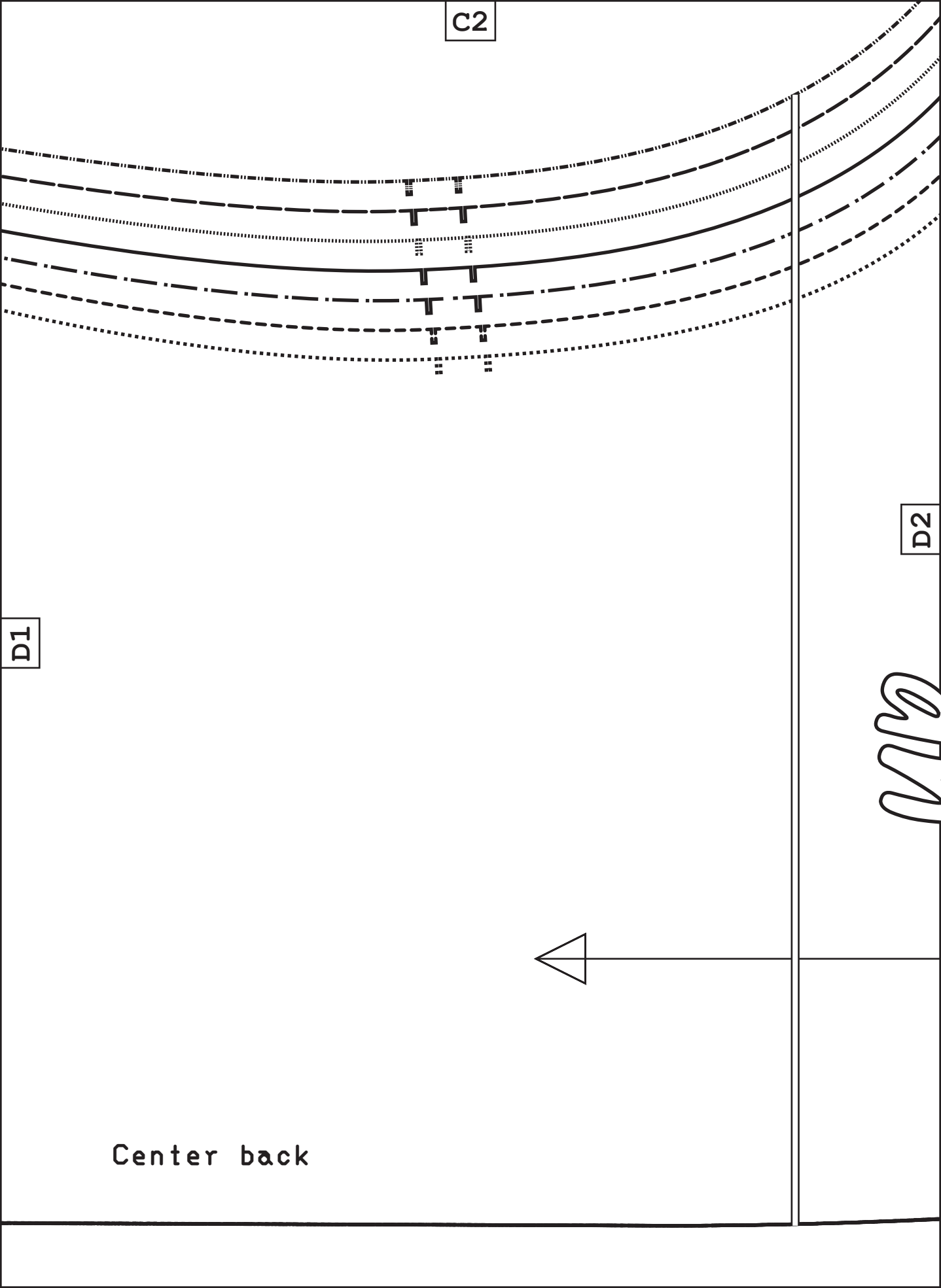
D2

*MS*

D1



Center back



D2

unfetteredpatterns.blog

Model #UP1060

Sizes XS-XL








Back

Cut 2x fabric

xxHem and seam allowances included!xx

C3

### SIZE KEY

- XL 
- L 
- M/L 
- M 
- S/M 
- S 
- XS 

### PATTERN SYMBOLS

NOTCHES



D3

Grainline

ADJUSTMENT LINE

MARKING



BUTTON



BUTTONHOLE



**Hem allowance  
4 cm (1 1/2")**

C4

Grainline

