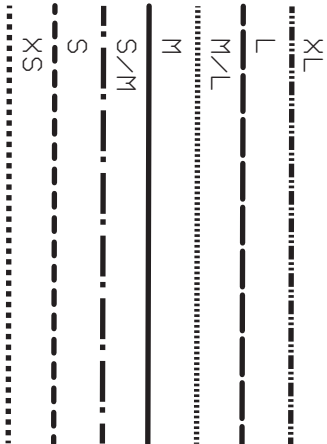


TV

SIZE KEY



Elastic length #1  
Cut 1x knitted elastic  
1 cm (3/8") wide

Hem allowance  
2 cm (3/4")

AI

ter back

A2

dn

unfetteredpatterns.blog  
Model #UP1059  
Sizes XS-XL



Place this edge  
on the fold of the fabric

dn

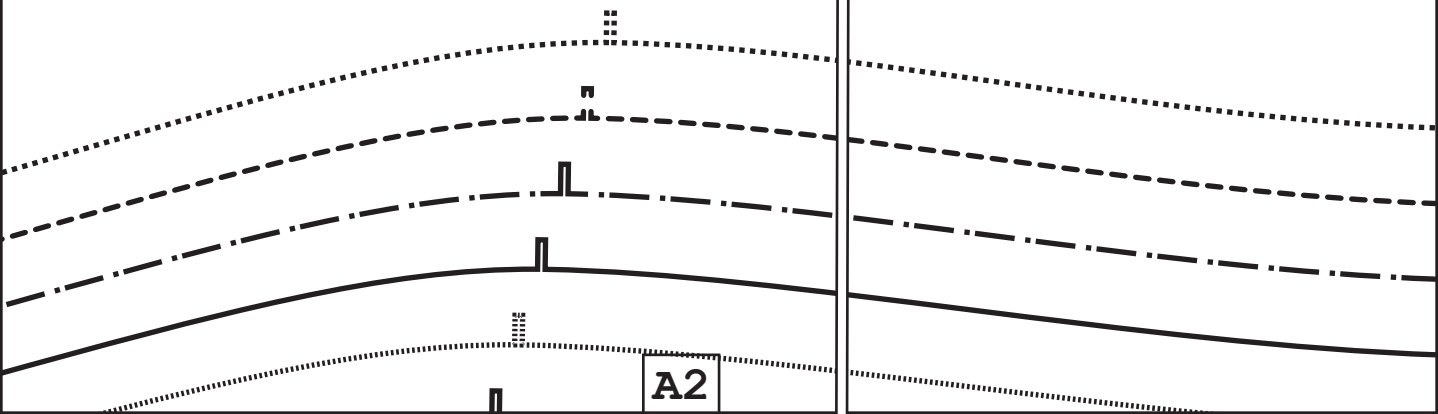
unfetteredpatterns.blog  
Model #UP1059  
Sizes XS-XL

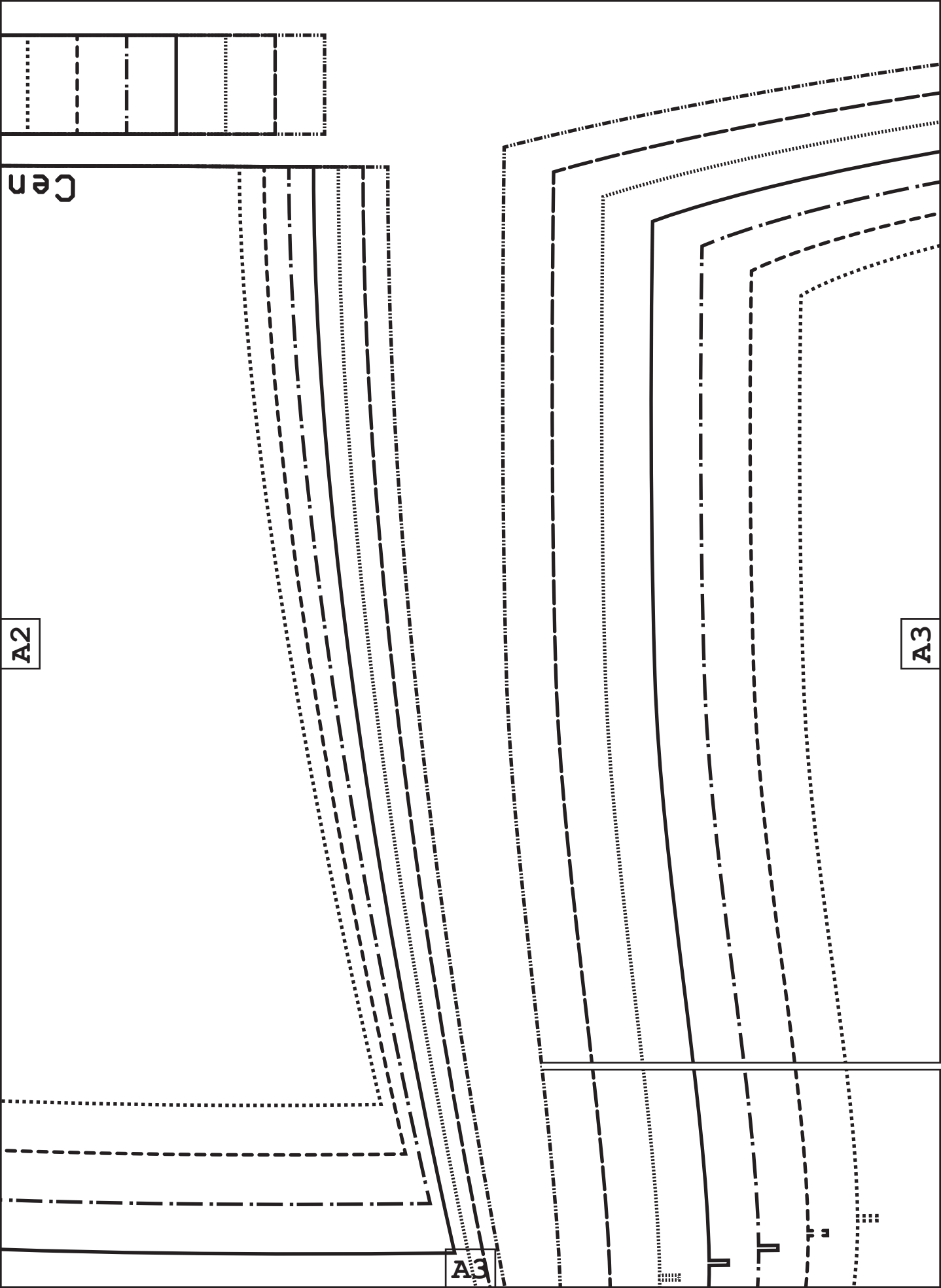
Back  
Cut 1x fabric

xxHem and seam allowances included!xx

A1

A2





A2

Cen

A3

A3

A3



unfetteredpatterns.blog

Model #UP1059

Sizes XS-XL

**Front**

Cut 1x fabric

**\*\*Hem and seam allowances included!\*\***

Center front



**SIZE KEY**

XL

L

A4

edge  
the fabric

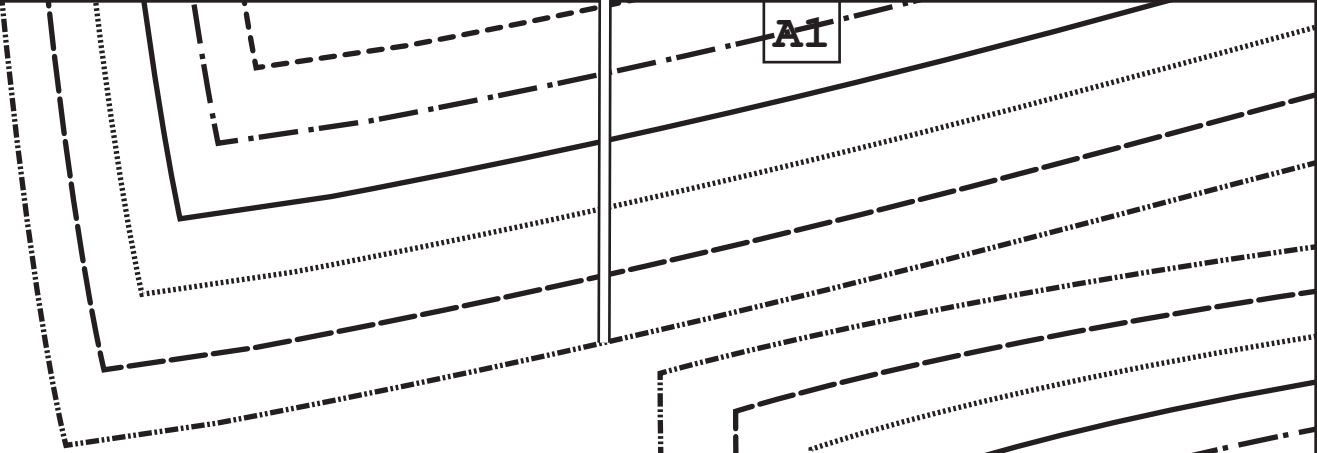
**Elastic length #2**

Cut 1x knitted elastic

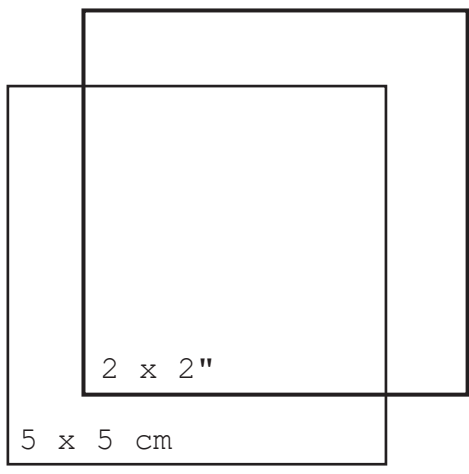
1 cm (3/8") wide

unfetteredpatterns.blog

UP1059



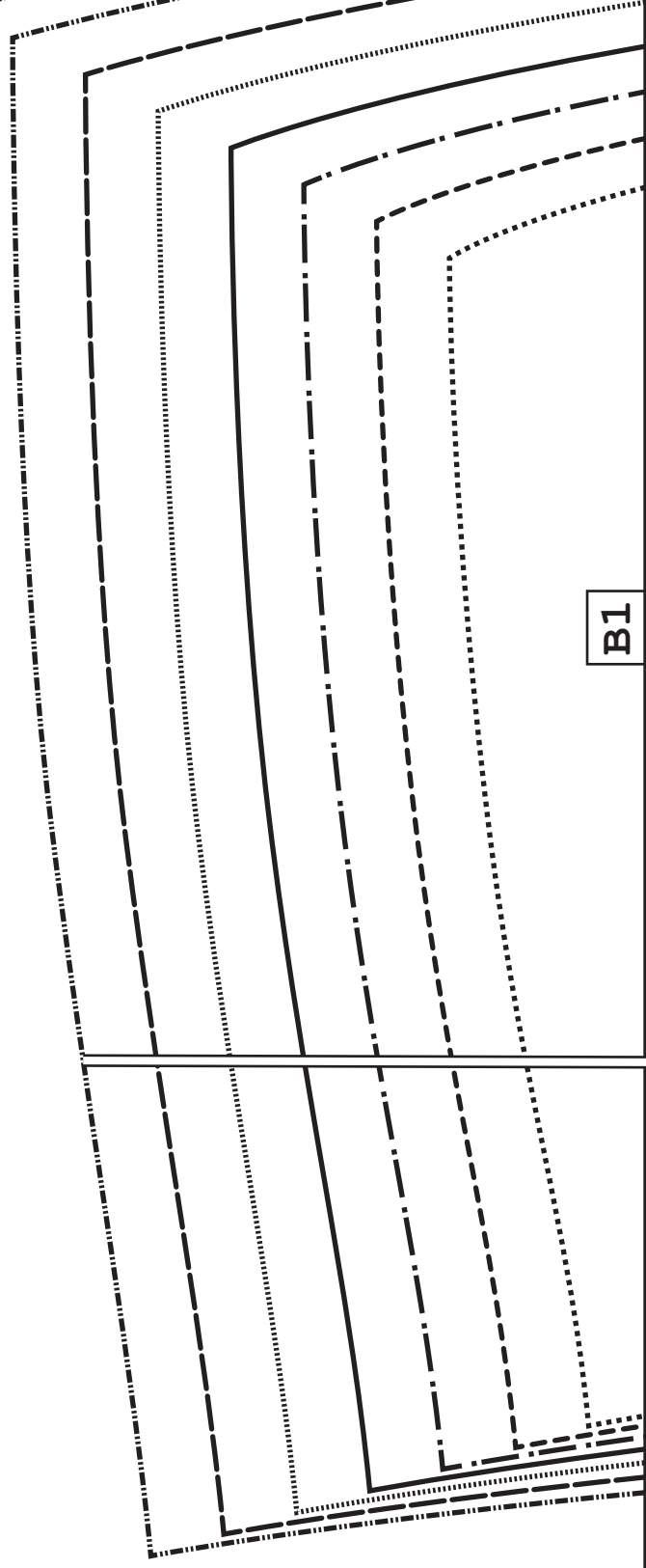
A1



© Unfettered Patterns 2025  
This is a free sewing pattern and  
resale or distribution is prohibited.

### Tiling layout

A1	A2	A3	A4
B1	B2	B3	B4



B1

A2

up

B1

unfetteredpatterns.blog

Model #UP1059

Sizes XS-XL

Front facing

Cut 1x fabric

\*\*Hem and seam allowances included\*\*

Place this edge  
on the fold of the fabric

Center front

B2

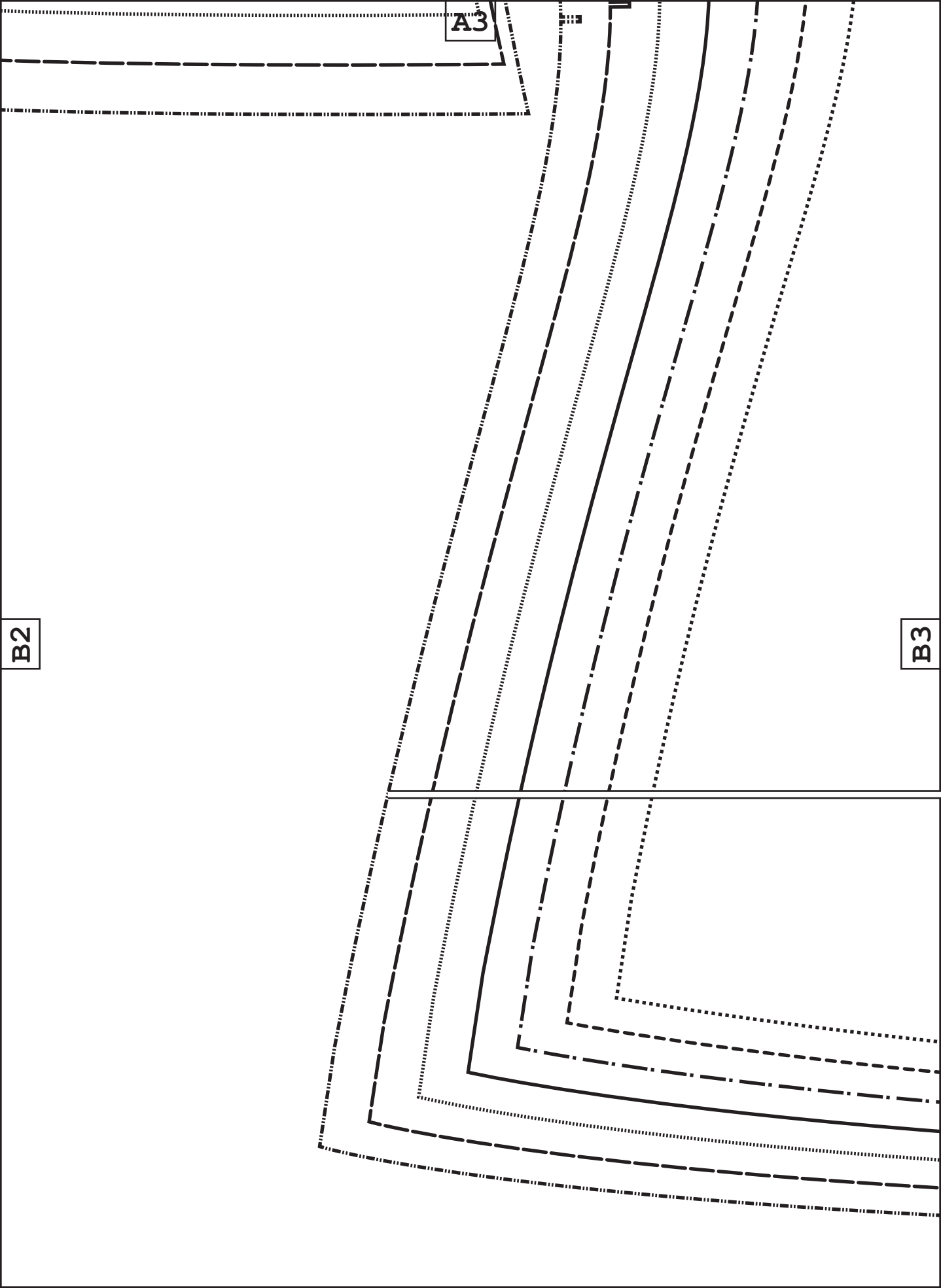
Hem allowance  
1 cm (3/8")

A3

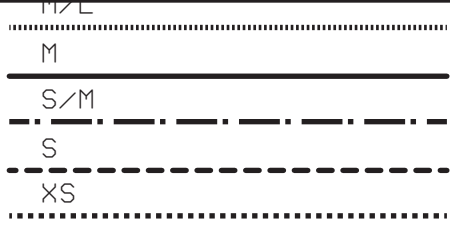
A1

B2

B3



A4



Place this on the fold of

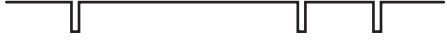


unfetteredp  
 Model #UP10  
 Sizes XS-XL

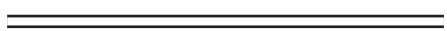


### PATTERN SYMBOLS

NOTCHES



ADJUSTMEN LINE



MARKING



BUTTON



BUTTONHOLE



B3

Hem allowance  
 2 cm (3/4")

