

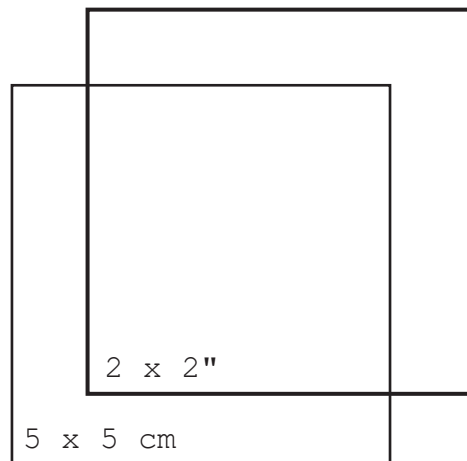
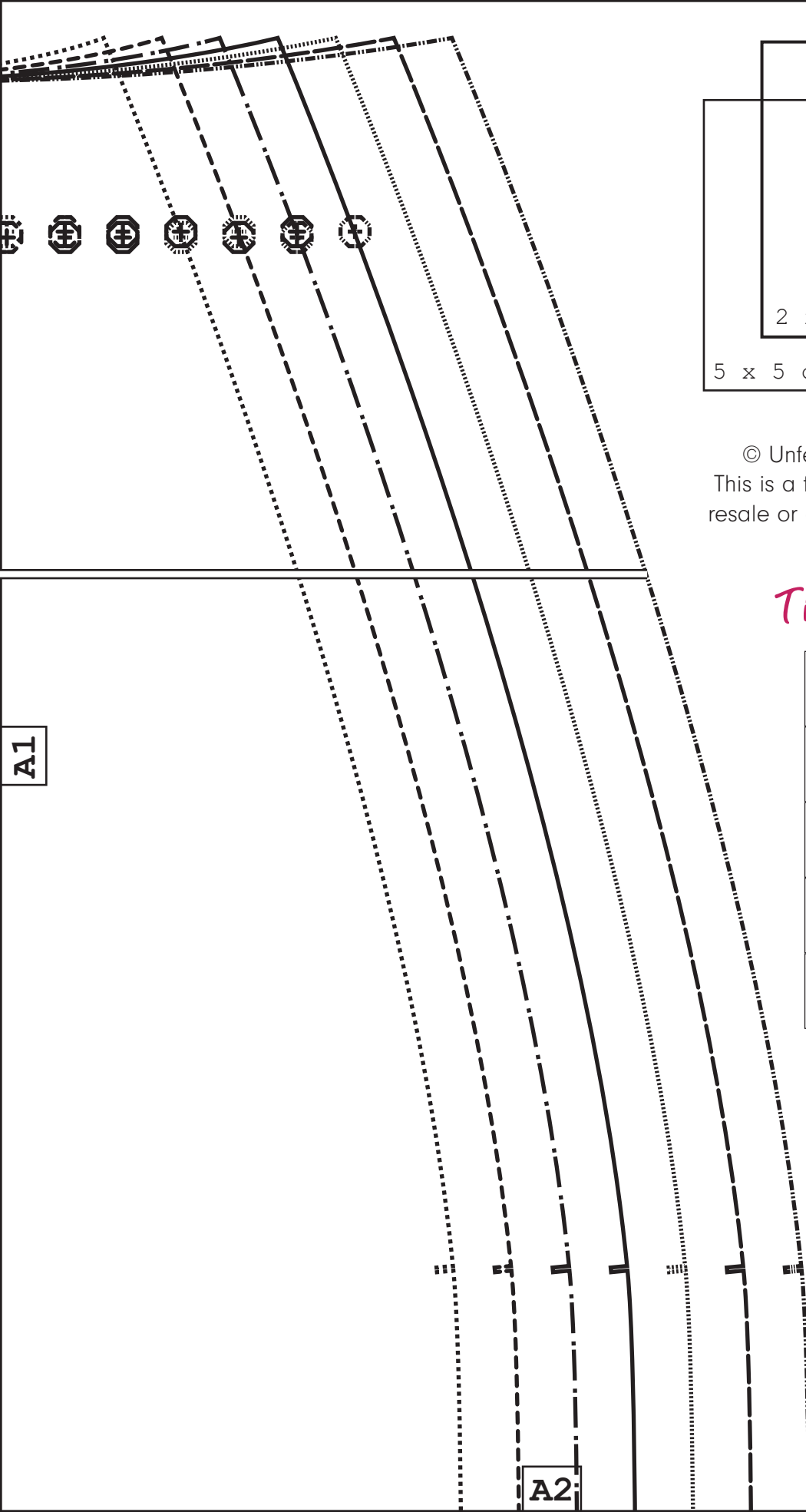


A1



A1

SIZE KEY



© Unfettered Patterns 2025  
 This is a free sewing pattern and resale or distribution is prohibited.

## Tiling layout

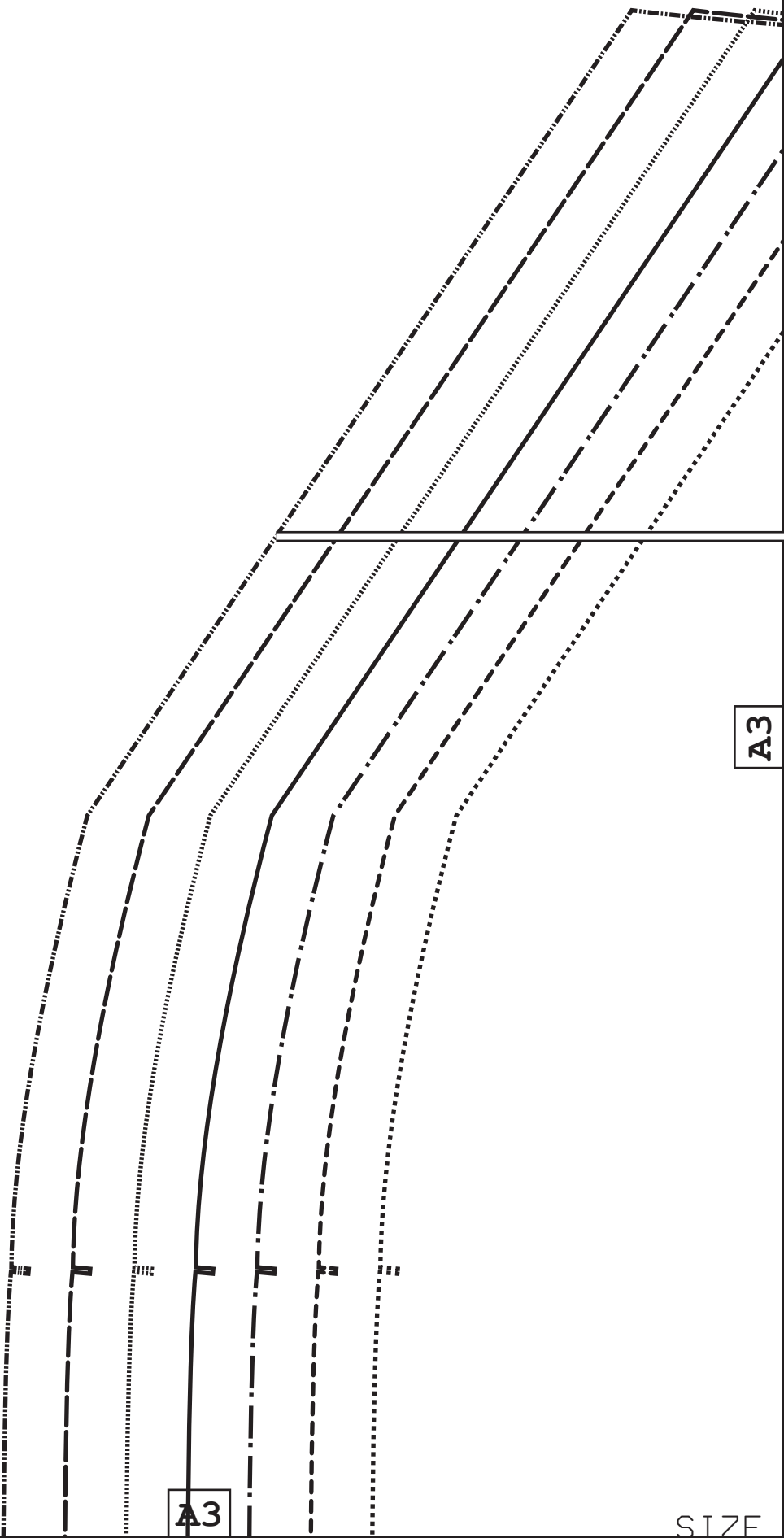
A1	A2	A3	A4
B1	B2	B3	B4
C1	C2	C3	C4
D1	D2	D3	D4
E1	E2	E3	

A1

A2

A2

A3



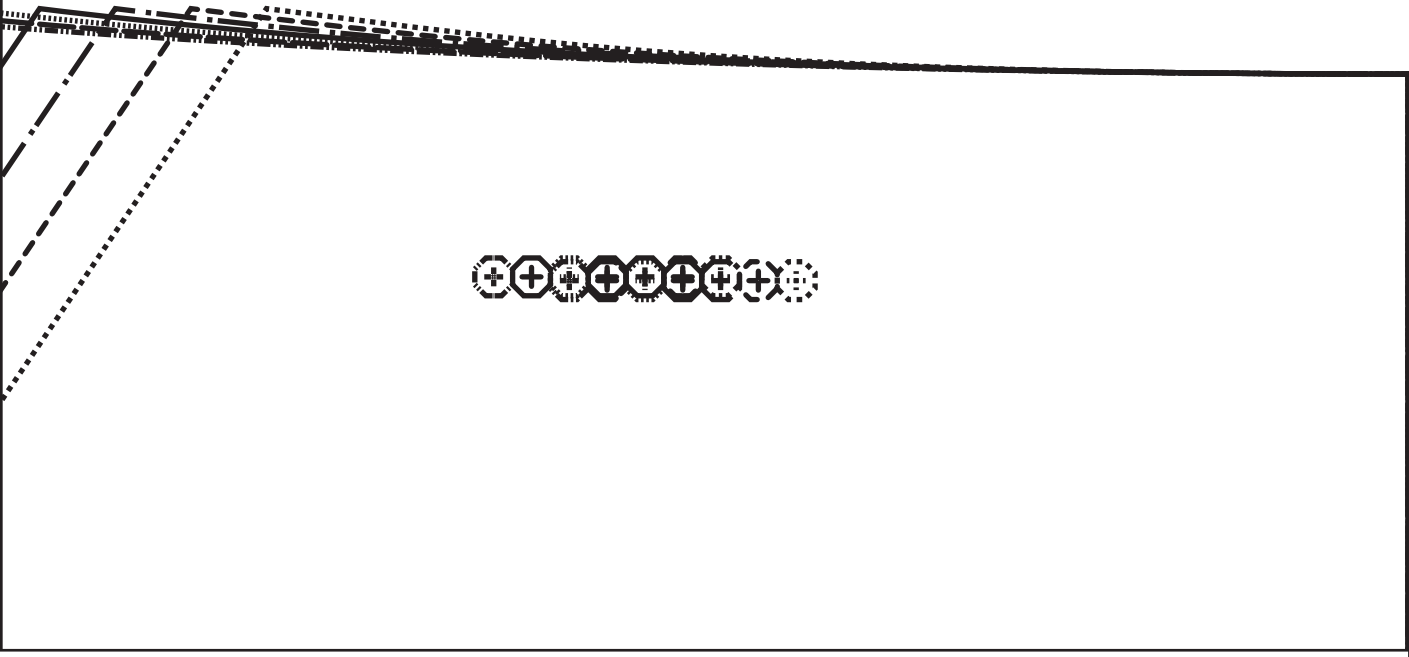
A3

SIZE

A2

*UP*

unfetteredpatterns.blog  
 Model #UP1057  
 Sizes XS-XL  
**Waistband**  
 Cut 1x fabric  
 Cut 1x interfacing



A3



A4

KEY

SIZE KEY

XL

L

M/L

M

S/M

S

XS

A1

Center back

B1

B1



- XL
- L
- M/L
- M
- S/M
- S
- XS

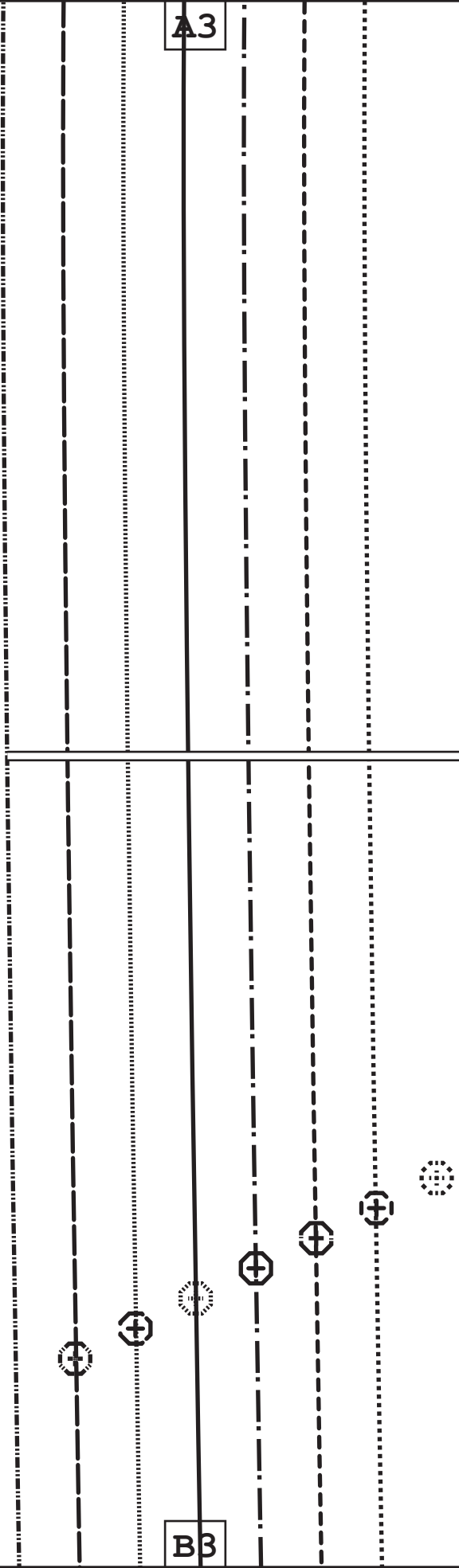
A3

B3

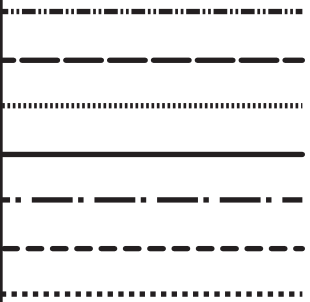
B3

Place this edge on the fold  
of the fabric

B2



A4



Center front

B3

B4

B1



unfetteredpatterns.blog

Model #UP1057

Sizes XS-XL

**Back**

Cut 2x fabric

\*\*Hem and seam allowances incl

Grainline



C1

C1

uded!xx

C1

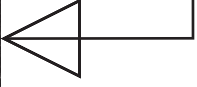
B2

C2

C2

erns.blog

C2



B3

C3

C3

xx

B4



unfetteredpatterns.blog

Model #UP1057

Sizes XS-XL

Front

Cut 2x fabric

em and seam allowances included! \*\*

Grainline

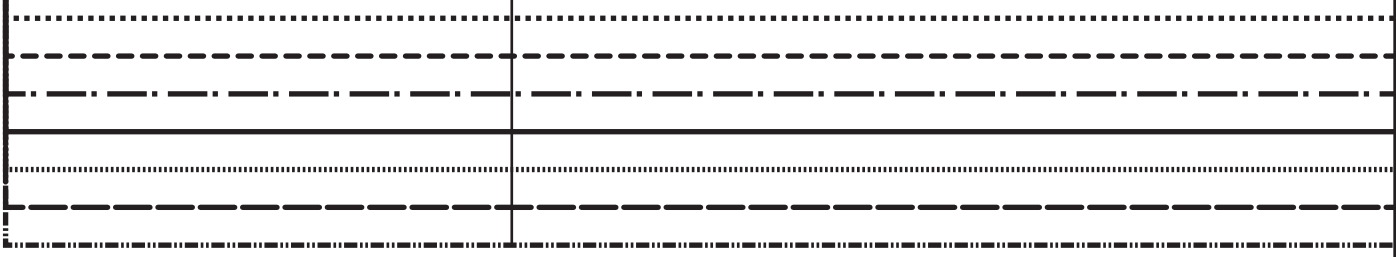
C3

C4

C1

D1

Hem allowance  
3 cm (1 1/4")



terns.blog

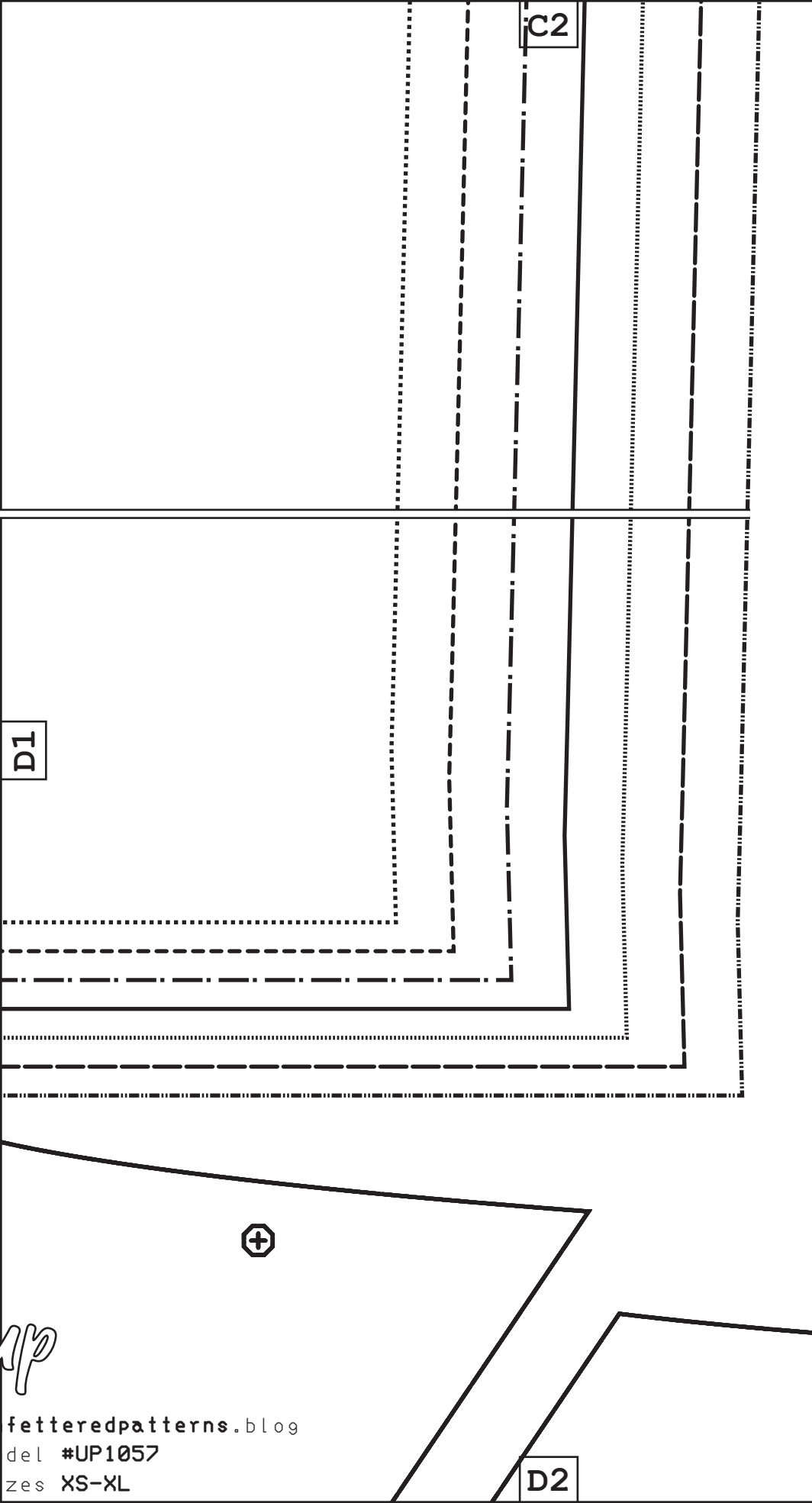
(wrong side up)  
acing (sticky side down)

atterns.blog

D1

ic  
rfacing

UR  
Mo  
S



*dp*

unfetteredpatt  
Model #UP1057  
Sizes XS-XL

**Belt loop**  
Cut 2x fabric



Grainline

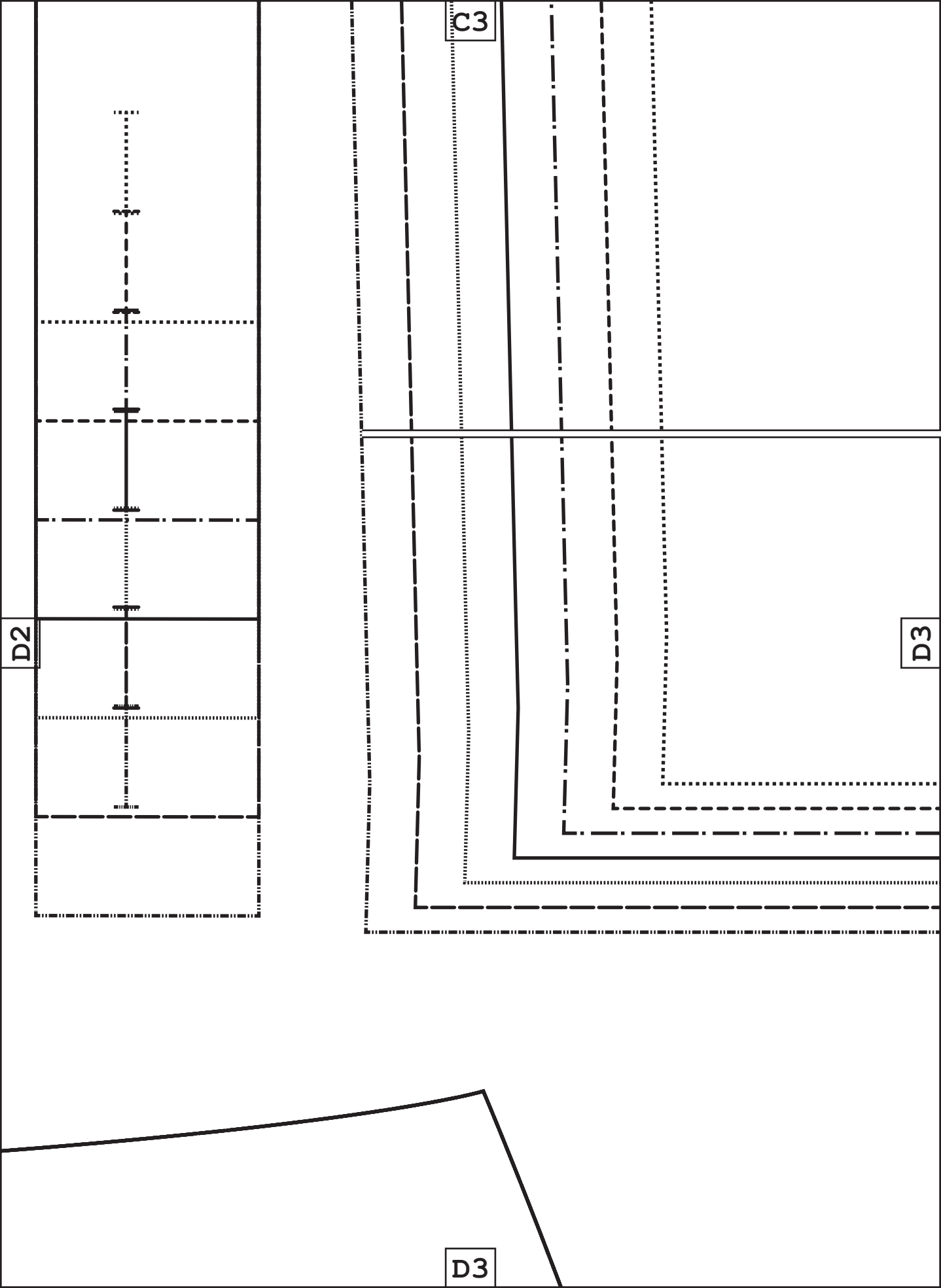
*dp*

D2

D2

C2

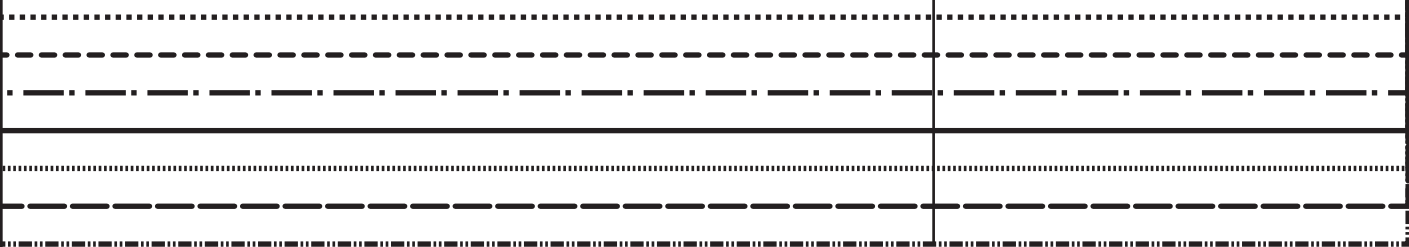
D1



C4

D3

Hem allowance  
3 cm (1 1/4")



unfetteredpat  
Model #UP1057  
Sizes XS-XL

*up*

Grainline



**Fly facing**

Cut 1x fabric  
Cut 1x interf

unfetteredpat  
Model #UP1057  
Sizes XS-XL

*up*

Grainline



**Fly shield**

Cut 1x fabric  
Cut 1x interf

**D**



Grainline



**E1**

Page  
Number

ocket backing  
t 2x fabric

D2



E1

E2

Grainline

unfetteredpatterns

Model #UP1057

Sizes XS-XL

**Pocket lining**

Cut 2x lining

**\*\*Hem and seam all**

D3

E2

.blog

owances included!xx