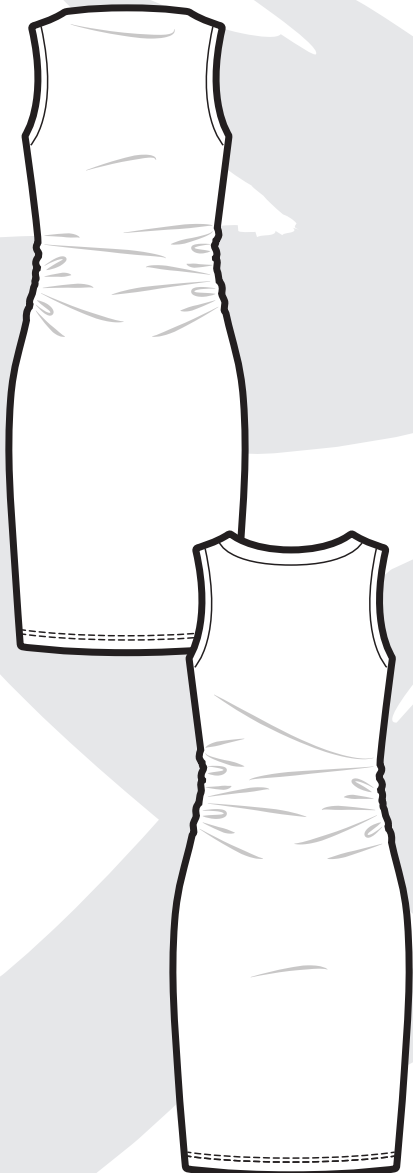


#UP1023

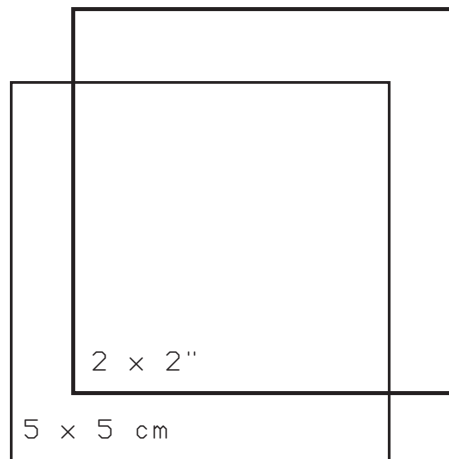
Knit dress

- Difficulty level: easy
- Sizes: XS-XL
- **Seam allowances included**



Read first!

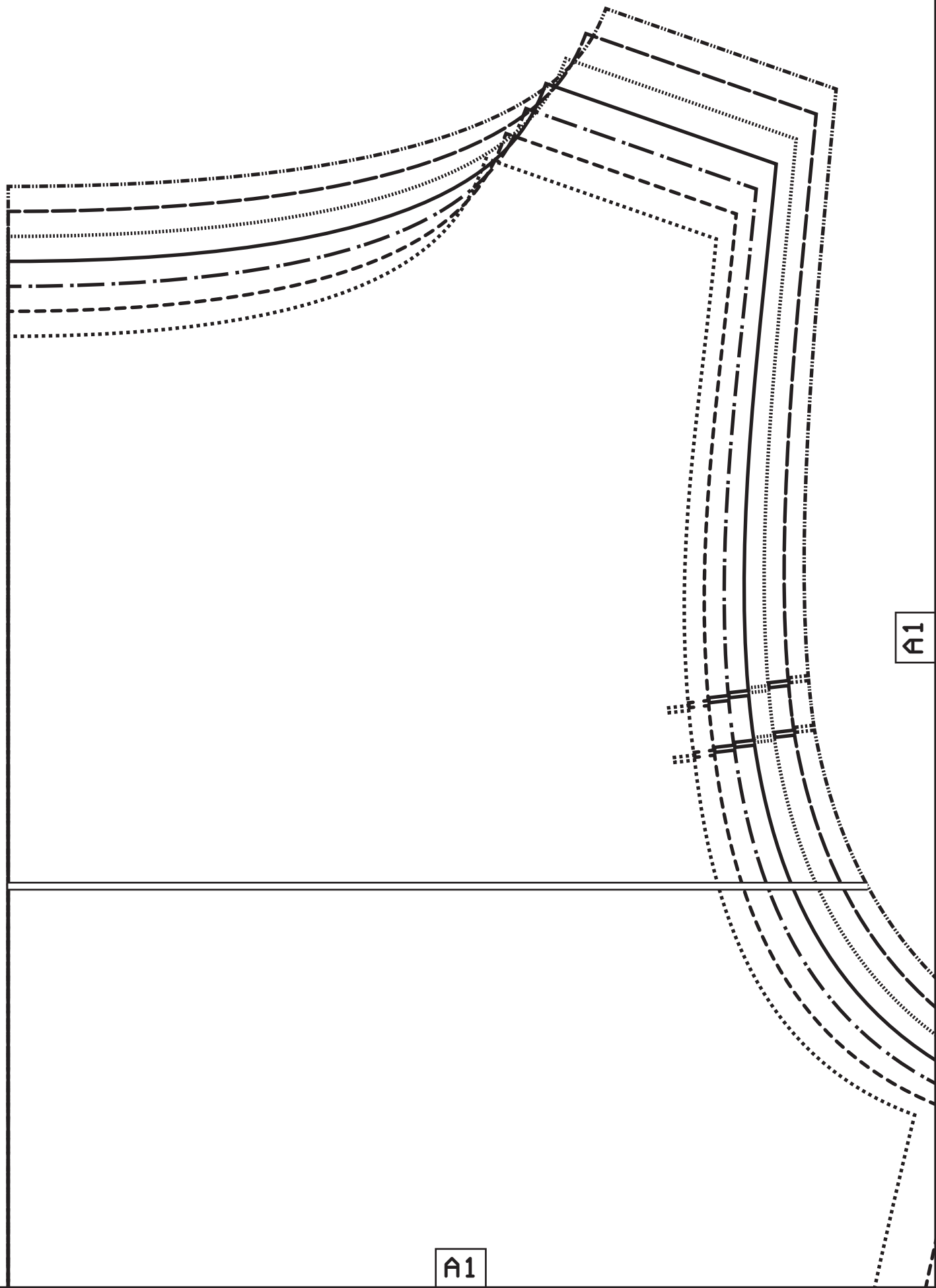
Open your PDF sewing patterns in the desktop version of Acrobat Reader, and use the layers feature to hide the sizes you don't need. Click the PRINT icon, ensuring the ACTUAL SIZE option is checked and the orientation is set to default before printing. The control square below is included for size verification. To assemble, trim the bottom and right margins of each sheet, then tape them together, aligning the corresponding markers.



© Unfettered Patterns 2025
This is a free sewing pattern and resale or distribution is prohibited.

Tiling layout

A1	A2	A3
B1	B2	B3
C1	C2	C3
D1	D2	D3
E1	E2	E3



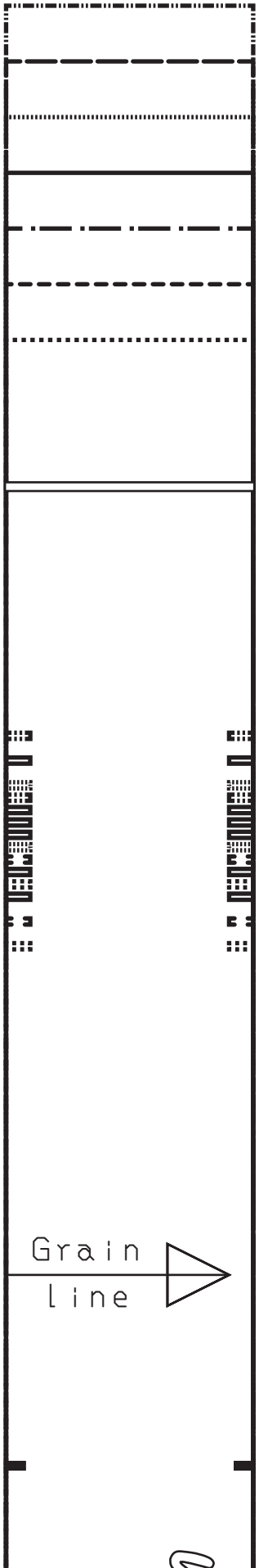
A1

A1

A2



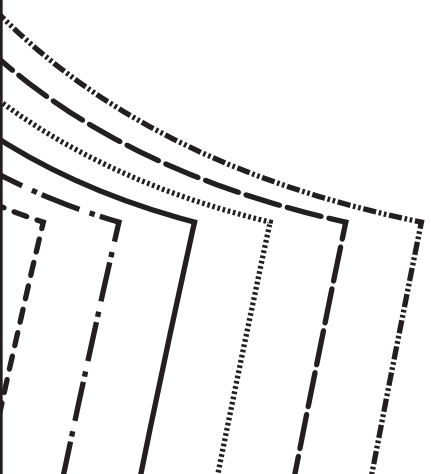
A2



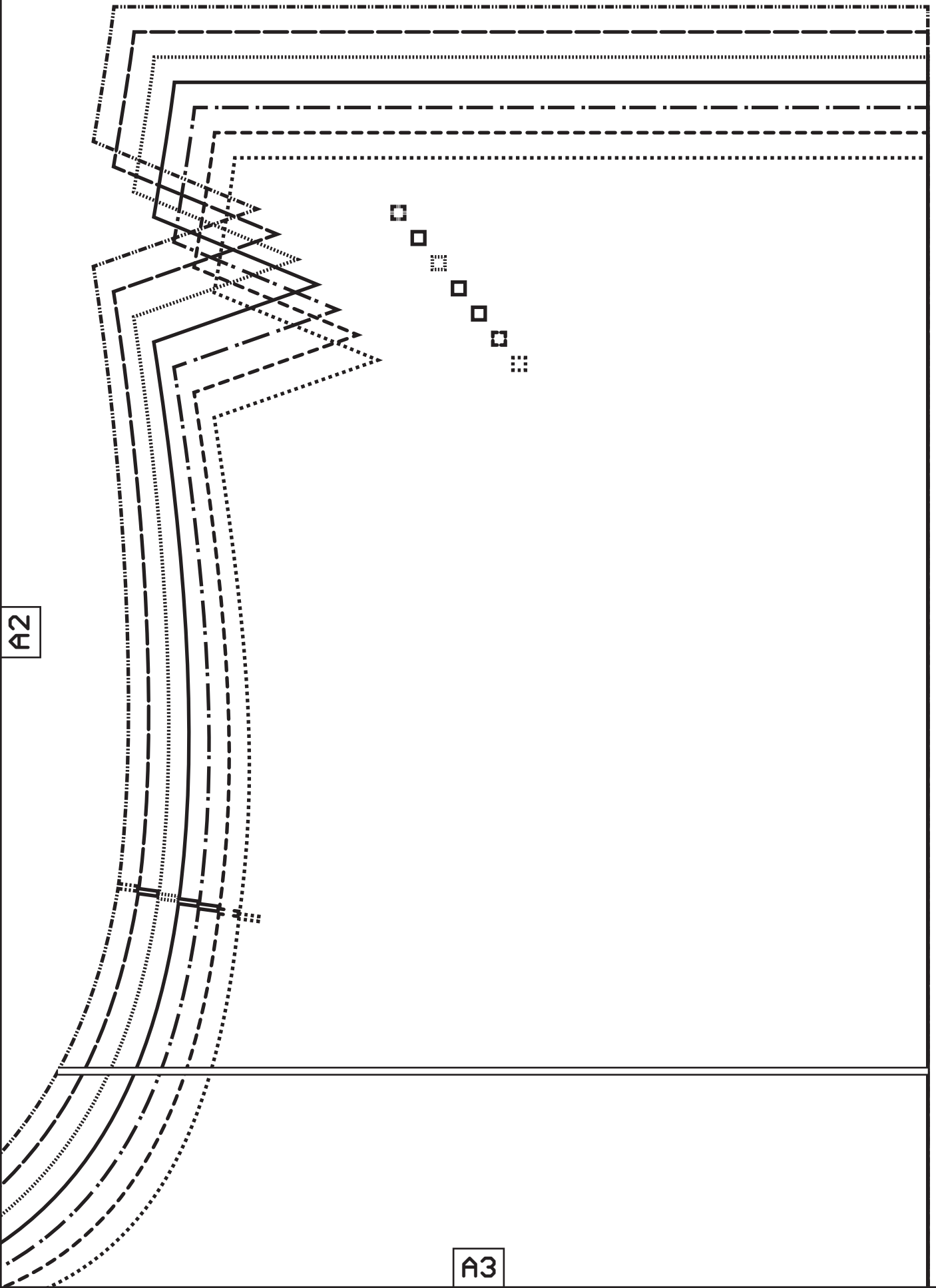
unfettered
unfetteredpatterns.blog
Model #UP1023
Sizes XS-XL

Side elastic
Cut 2x clear elastic
1 cm (3/8") wide

A1



A2



A3

A1

B1



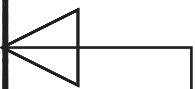
up

unfetteredpatterns.blog
 Model #UP1023
 Sizes XS-XL

Back
 Cut 1x fabric

xxHem and seam allowances included!xx

Place this edge
 on the fold of the fabric



Center back

B1

A2



unfetteredpatterns . blog

Model #UP1023

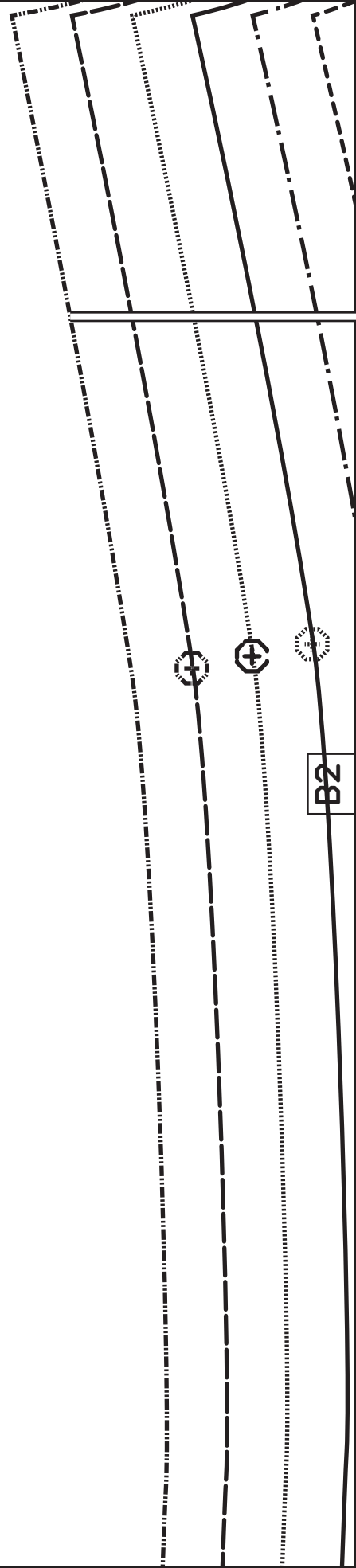
Sizes XS-XL

Armhole band

Cut 2x fabric

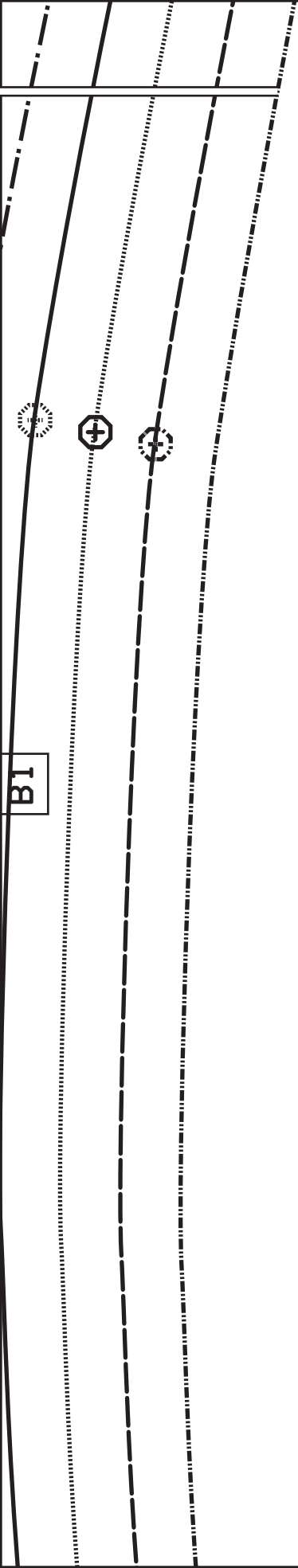


B2

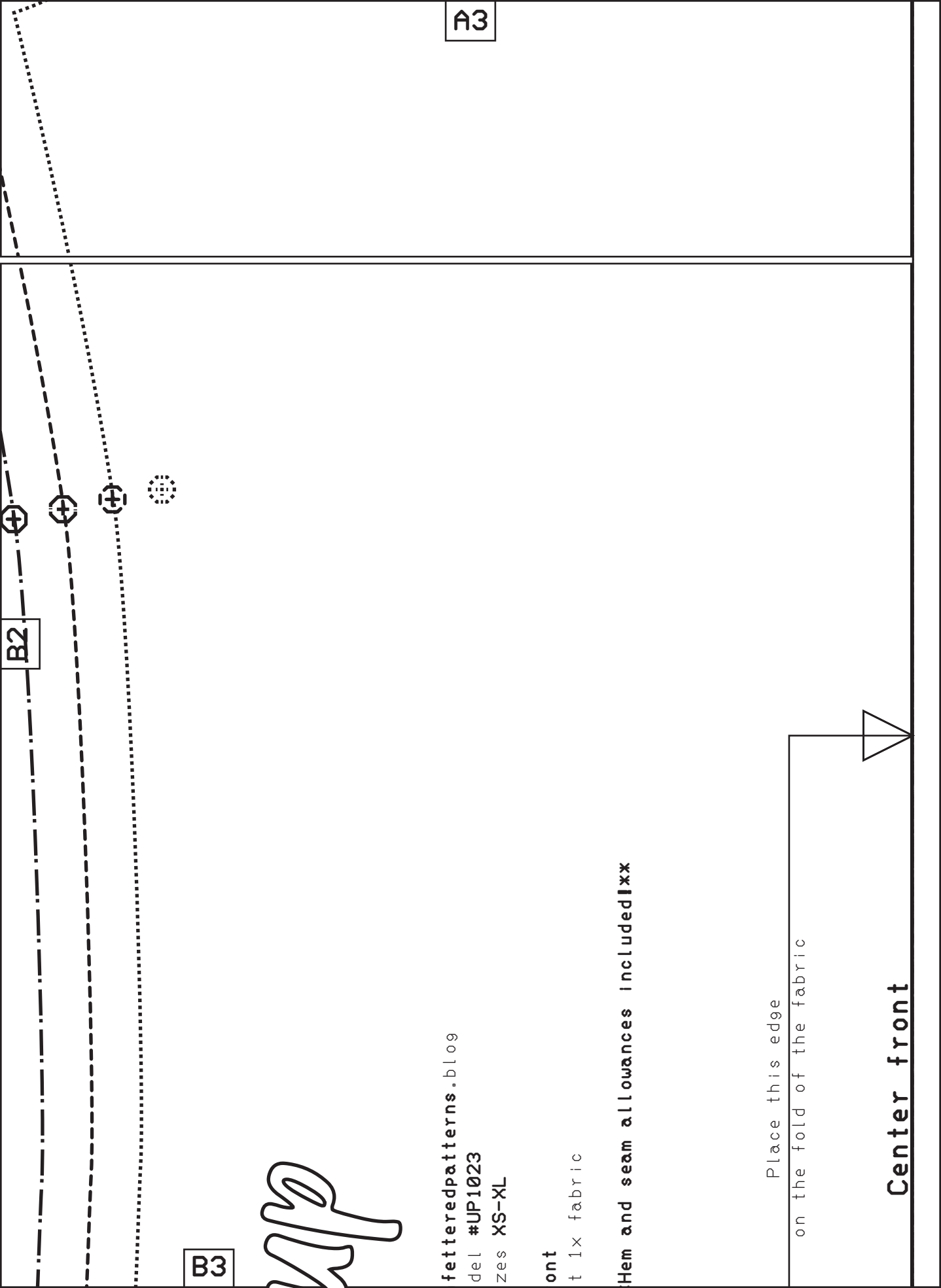


B2

B1



A3



B2

B3

fup

fetteredpatterns.blog
del #UP1023
zes XS-XL

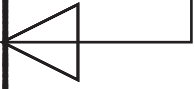
ont
t 1x fabric

Hem and seam allowances included**

Place this edge
on the fold of the fabric

Center front

B1



C1



C1

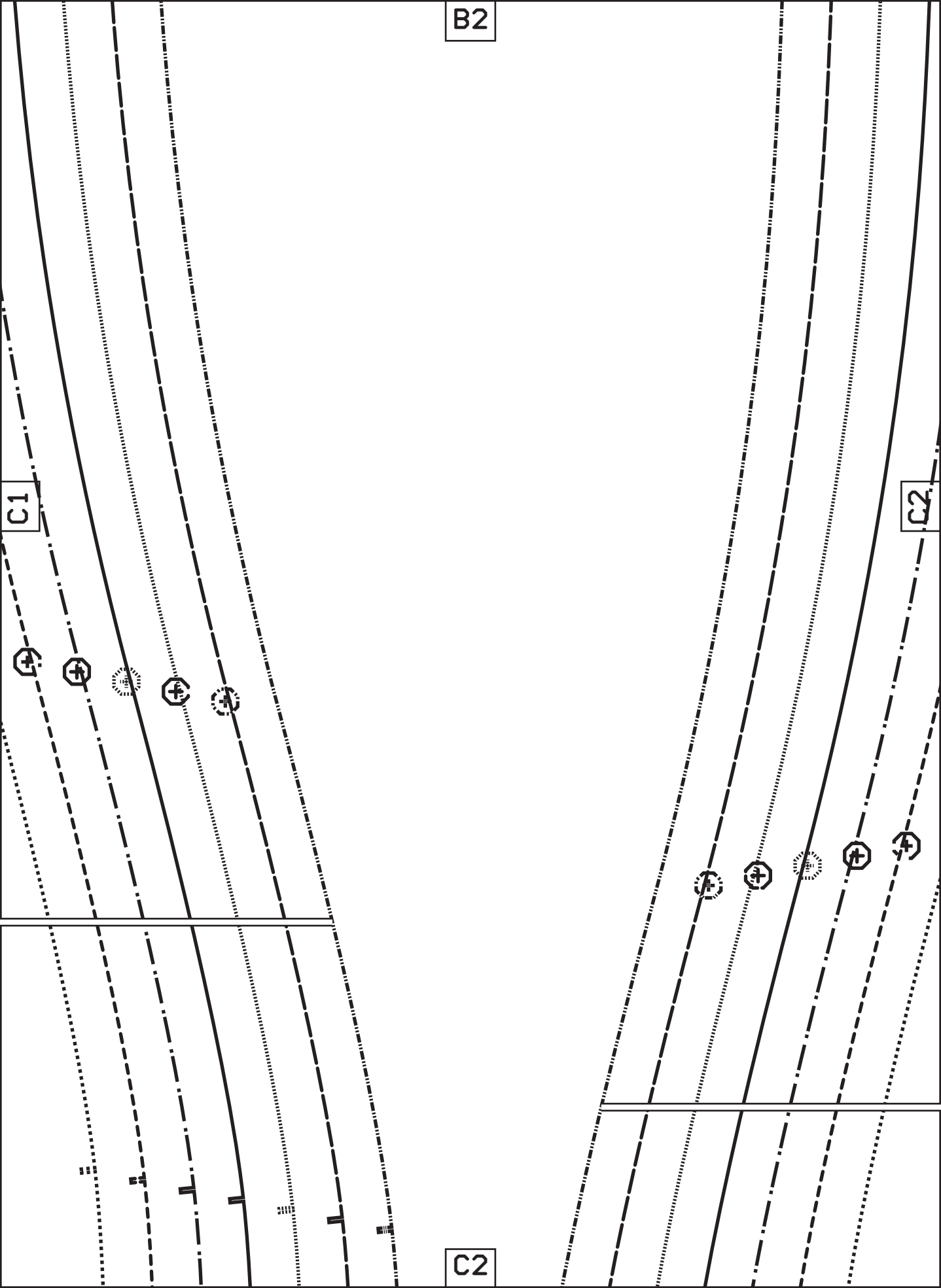
SIZE KEY

B2

C1

C2

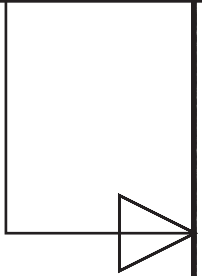
C2



B3



un
M
S
F
C
xx



C2

Find the **sewing instructions**, tips and sizing guide for this project by scanning the QR code with your smartphone.
OR
Go to **unfetteredpatterns.blog** and enter **UP1023** in the search bar.



C3

C1

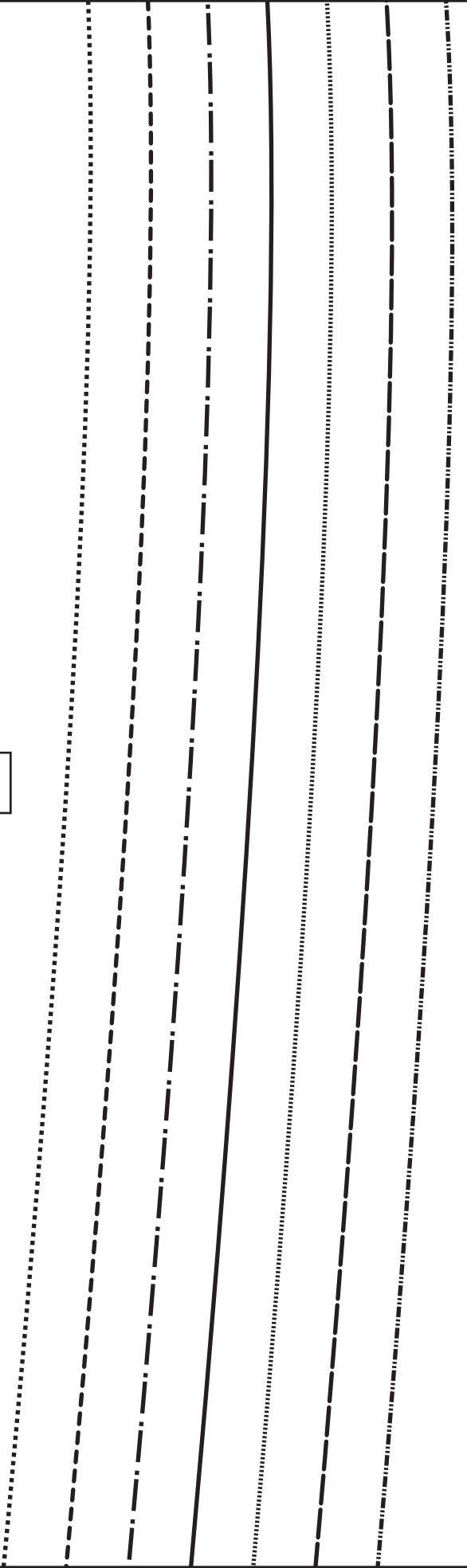
SIZE KEY

- XL
- L
- M/L
- M
- S/M
- S
- XS

D1

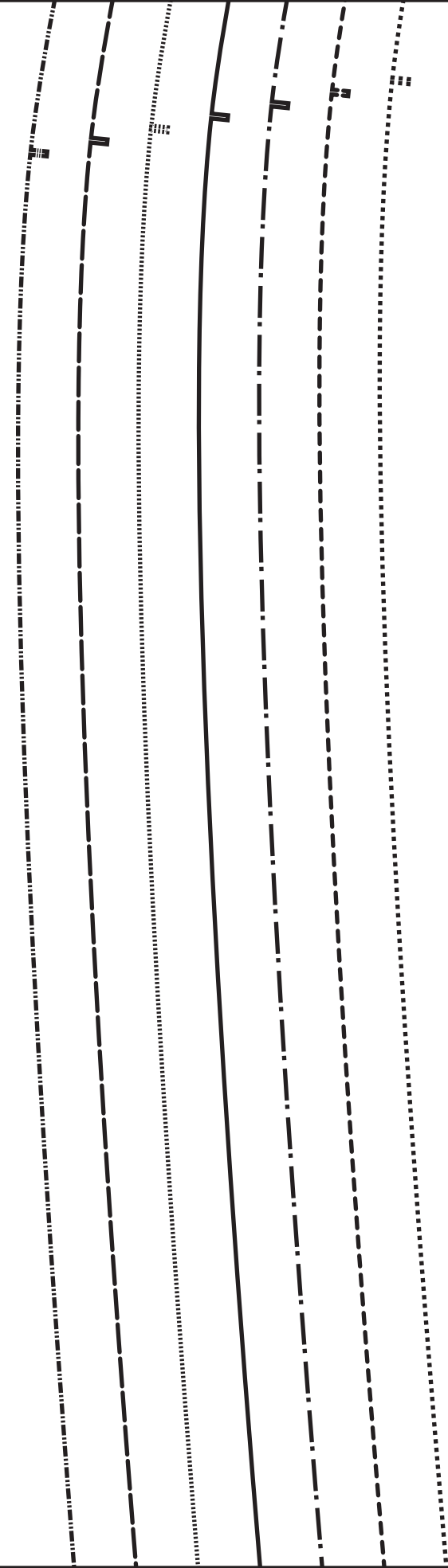
D1

D1



D2

C2



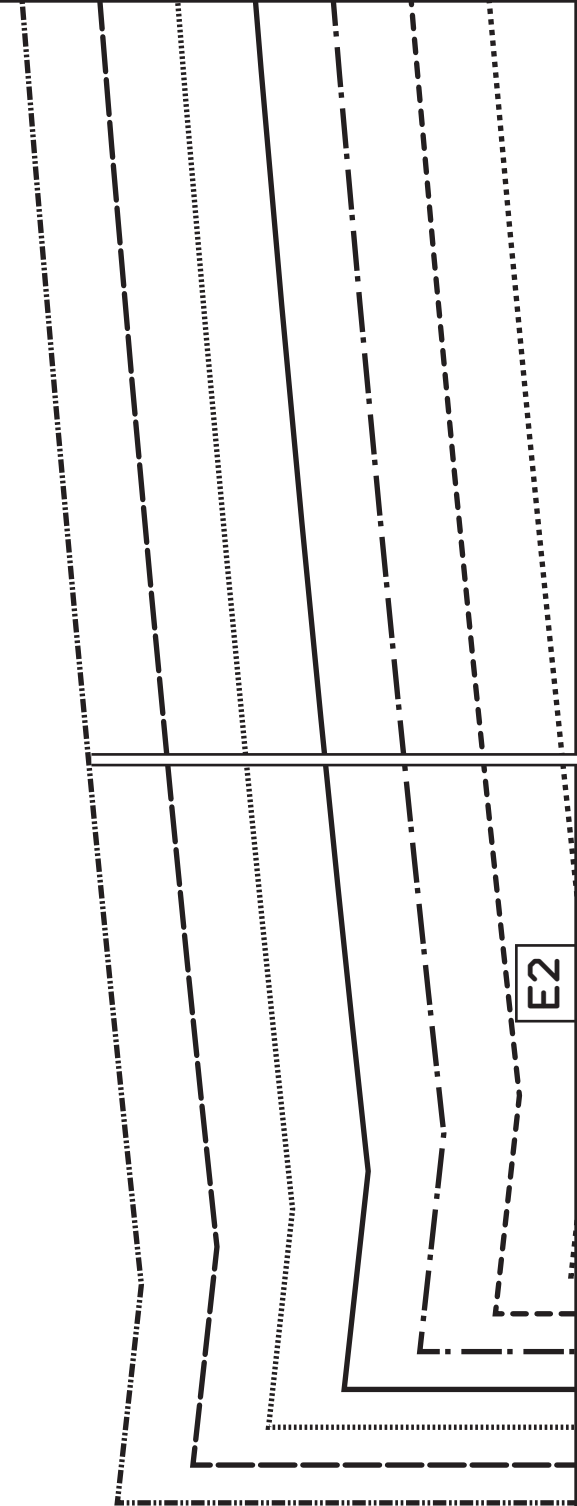
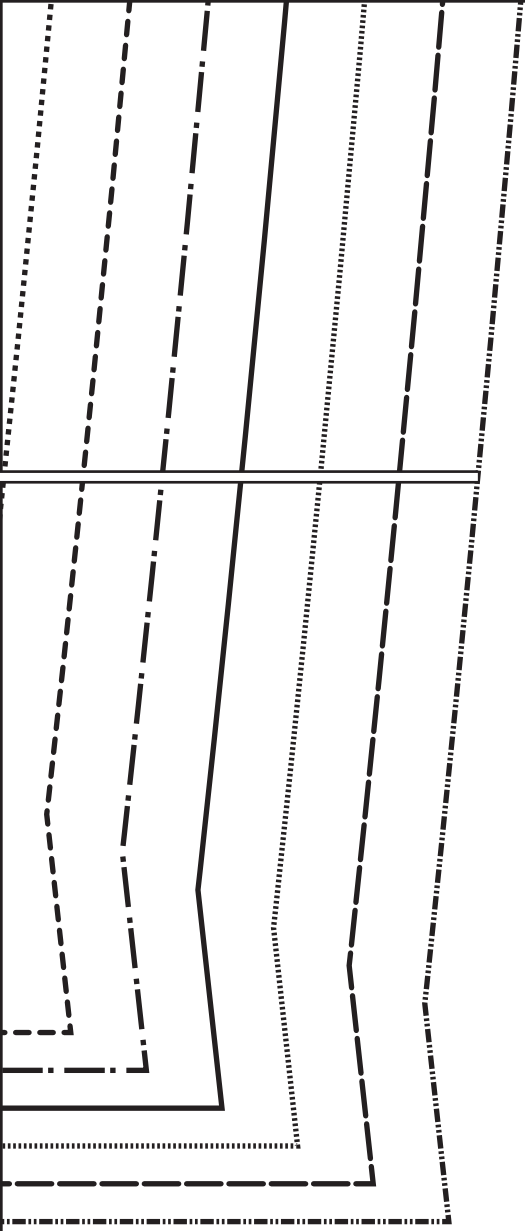
D2

D1

Hem allowance
3 cm (1 1/4")

E1

D2



E1

E2

D3

E2

Hem allowance
3 cm (1 1/4")

