

A1

A1

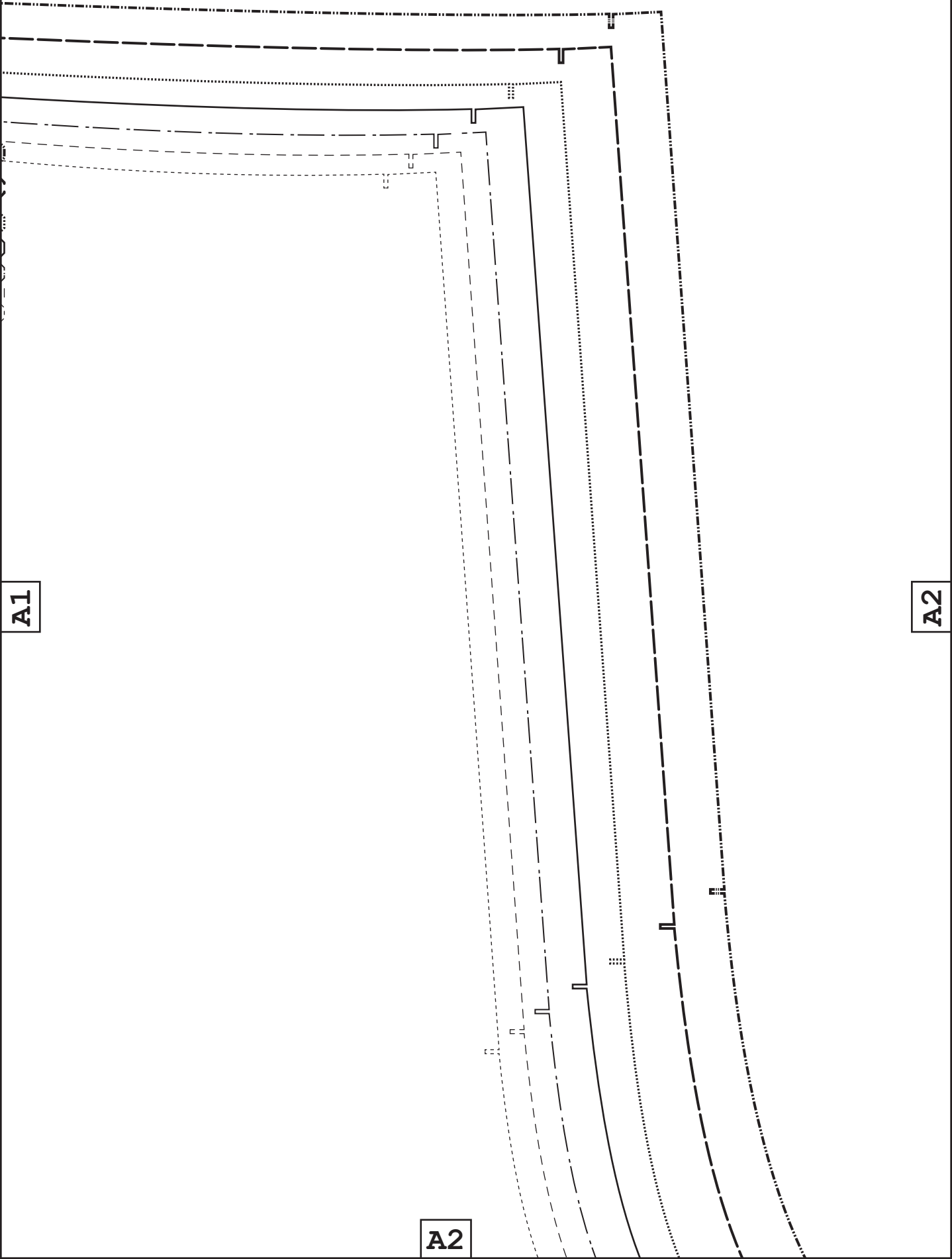
- ⊕
- ⊕
- ⊕
- ⊕
- ⊕
- ⊕
- ⊕
- ⊕



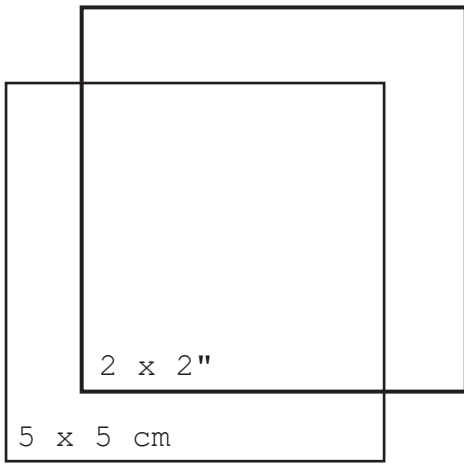
A1

A2

A2



A2



© Unfettered Patterns 2024
 This is a free sewing pattern and resale or distribution is prohibited.

Tiling layout

A1	A2	A3	A4
B1	B2	B3	B4
C1	C2	C3	C4
D1	D2	D3	D4
	E2	E3	E4
	F2	F3	F4

A3

unfetteredpatterns.wordpress.com

Model #UP1009

Sizes **XXS-XXL**

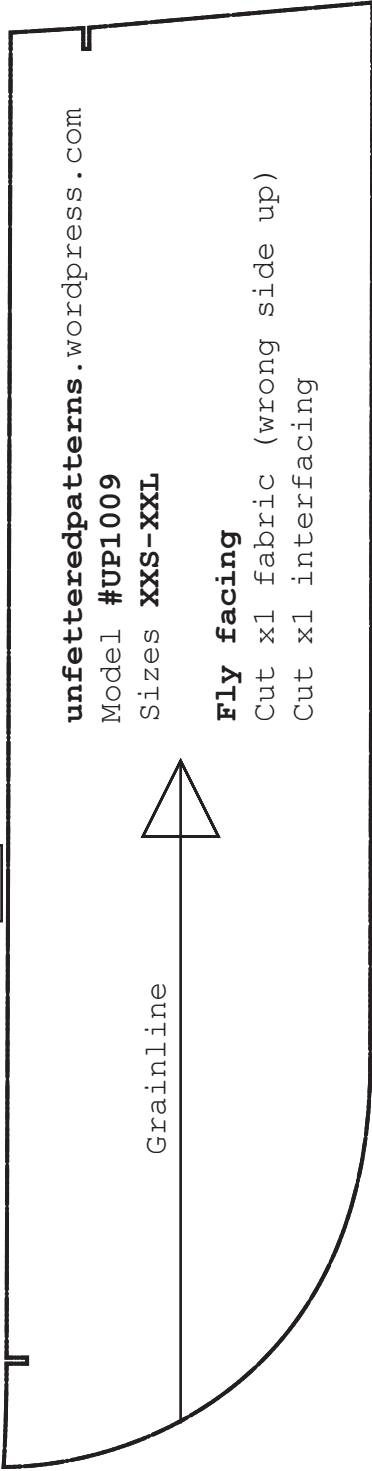
Belt loop

Cut x2 fabric



Grainline

A3



unfetteredpatterns.wordpress.com

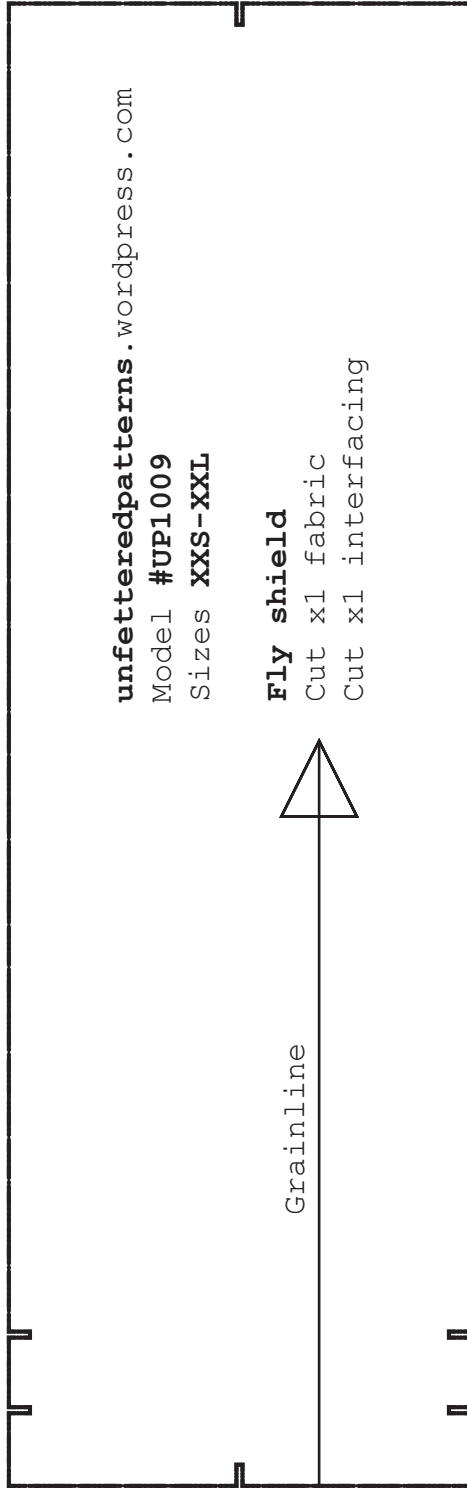
Model #UP1009

Sizes XXS-XXL

Fly facing

Cut x1 fabric (wrong side up)

Cut x1 interfacing



unfetteredpatterns.wordpress.com

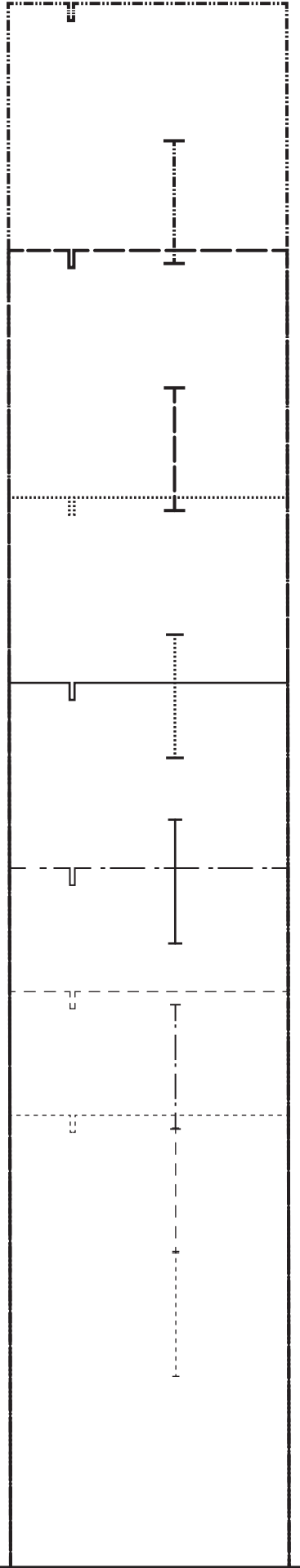
Model #UP1009

Sizes XXS-XXL

Fly shield

Cut x1 fabric

Cut x1 interfacing



A1

unfettered
— unfettered patterns —

unfetteredpatterns.wordpress.com

Model **#UP1009**

Sizes **XXS-XXL**

Front
Cut x2 fabric

B1

B1

A2

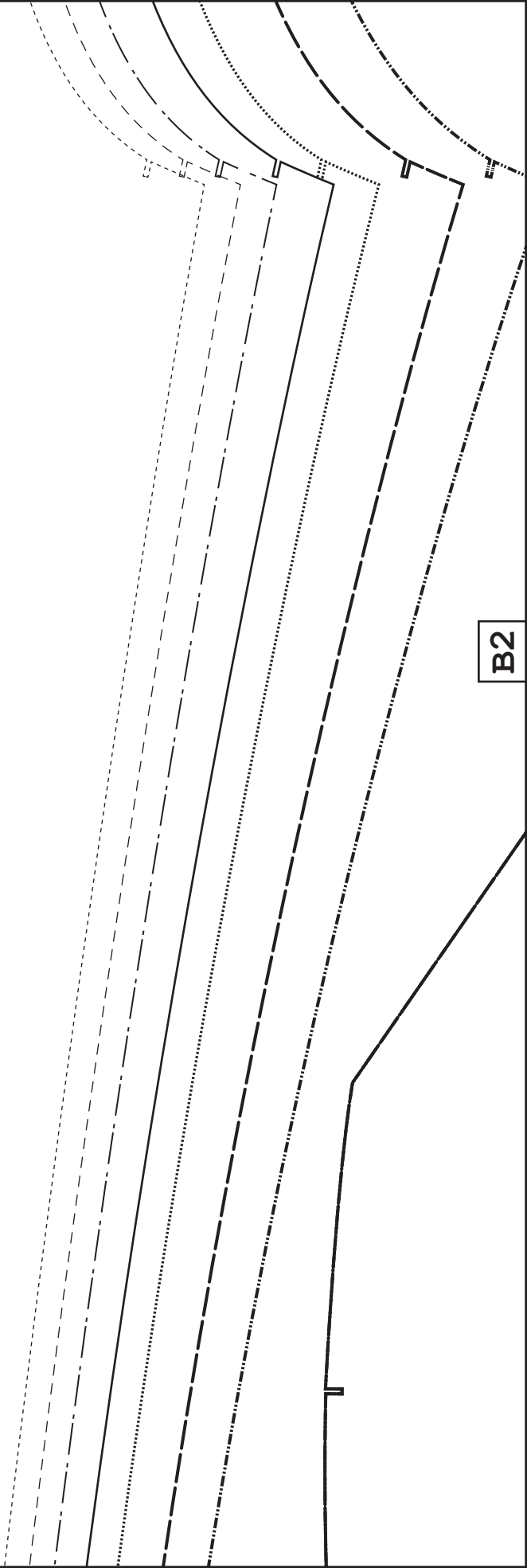
B2

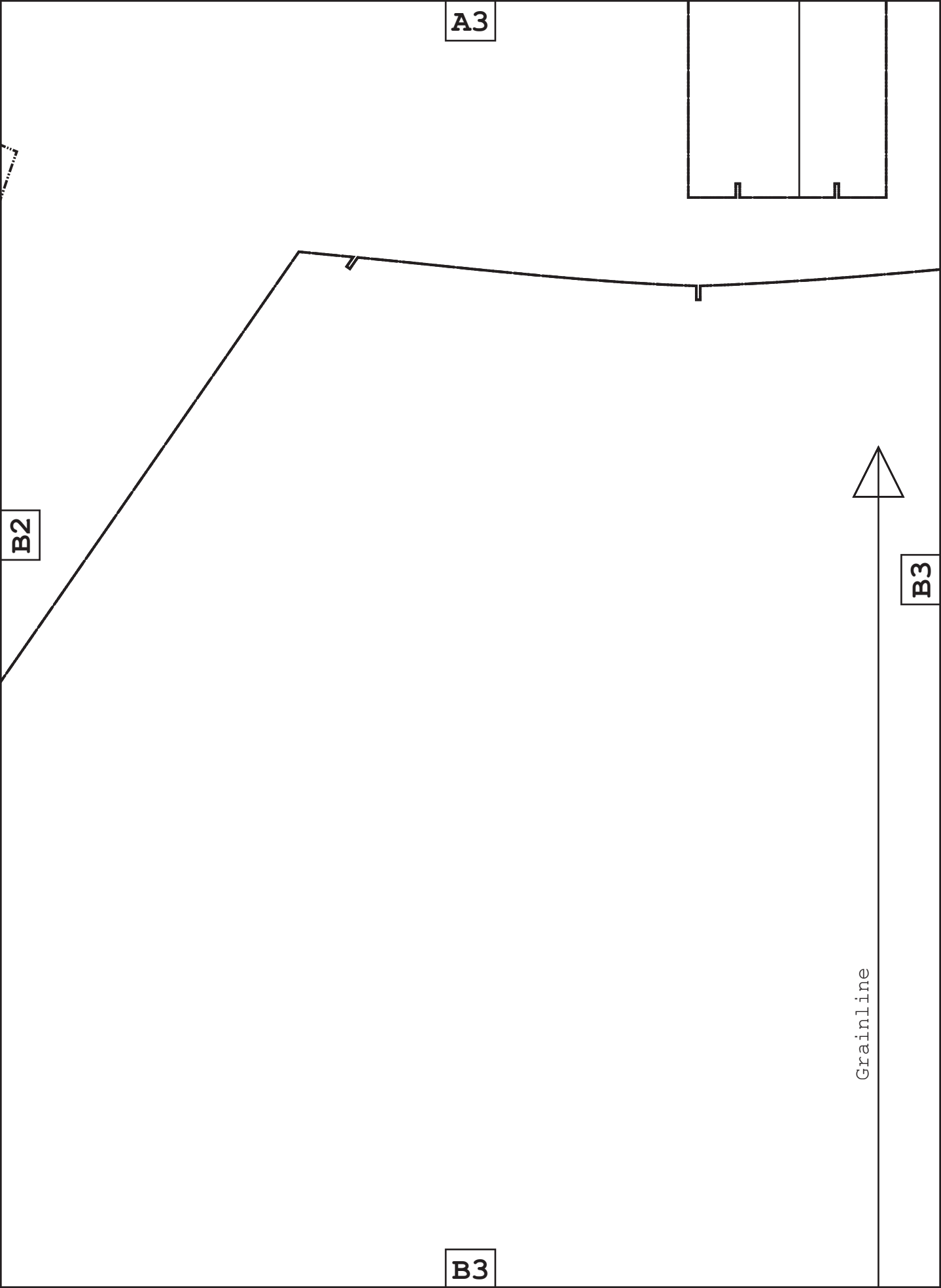
B1

SIZE KEY

XXL	-----
XL	-----
L
M	_____
S	-----
XS	-----
XXS	-----

B2





A3

B2

B3

B3

Grainline

A4

B3

unfettered
— unfettered patterns —

unfetteredpatterns.wordpress.com

Model #UP1009

Sizes **XXS-XXL**

Pocket lining

Cut x2 lining

B4

unfetteredpatterns.wordpress.com

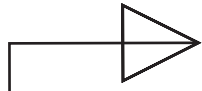
Model #UP1009

Sizes **XXS-XXL**

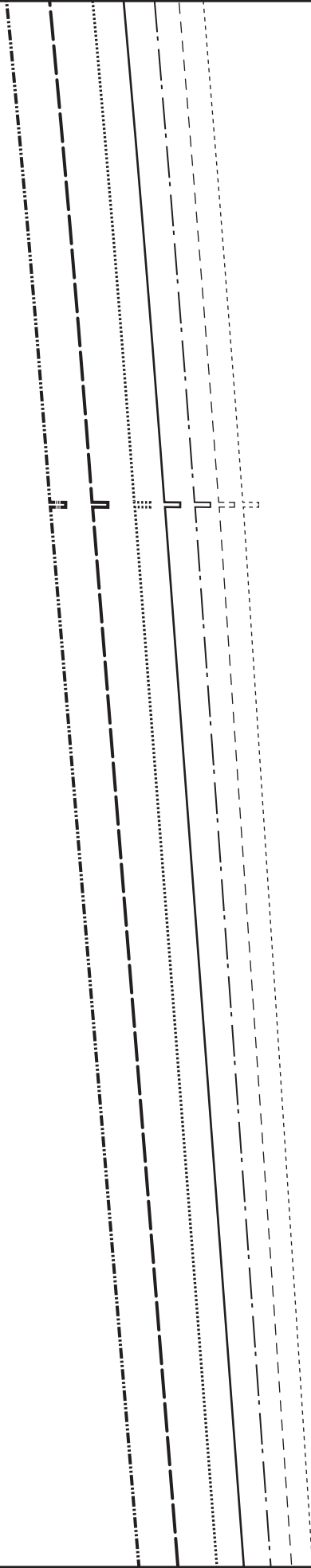
Belt

Cut x1 fabric

Cut x1 interfacing



B1



Grainline

C1

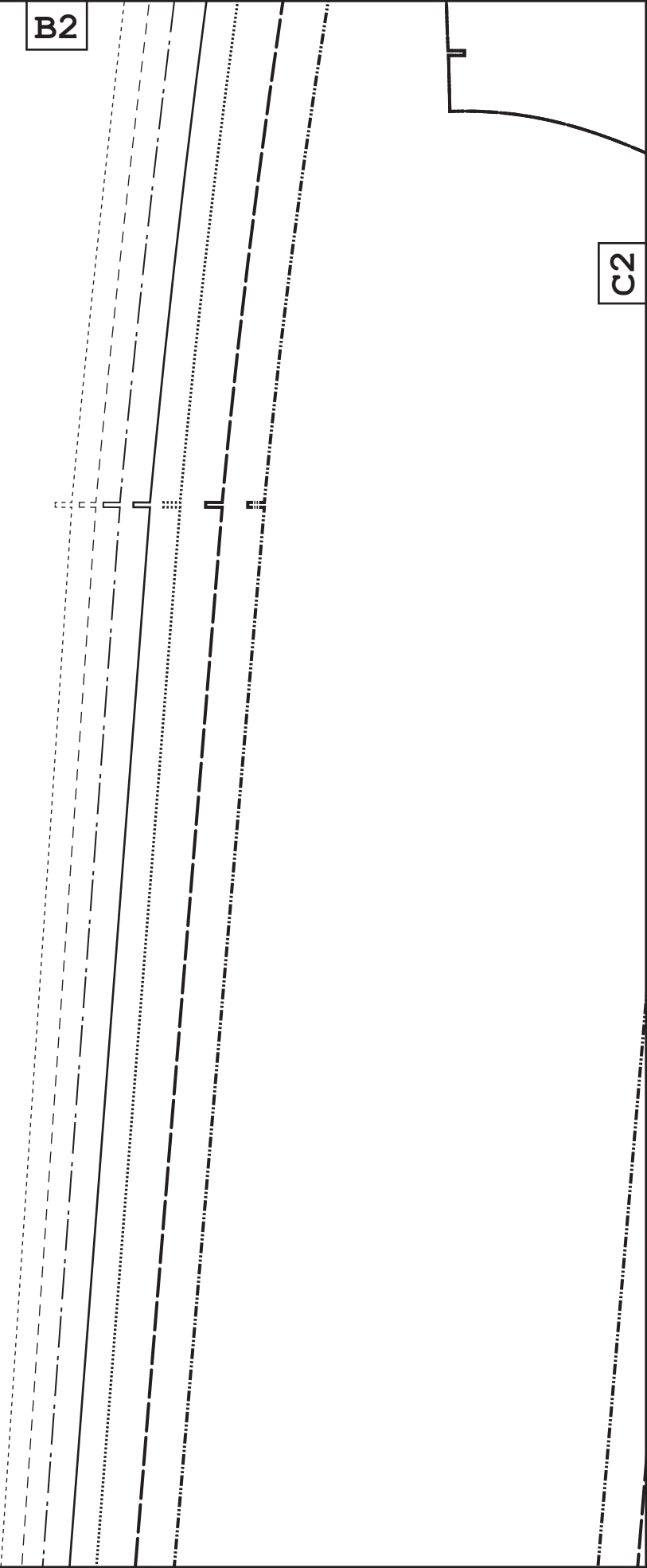
C1

B2

C2

C1

C2



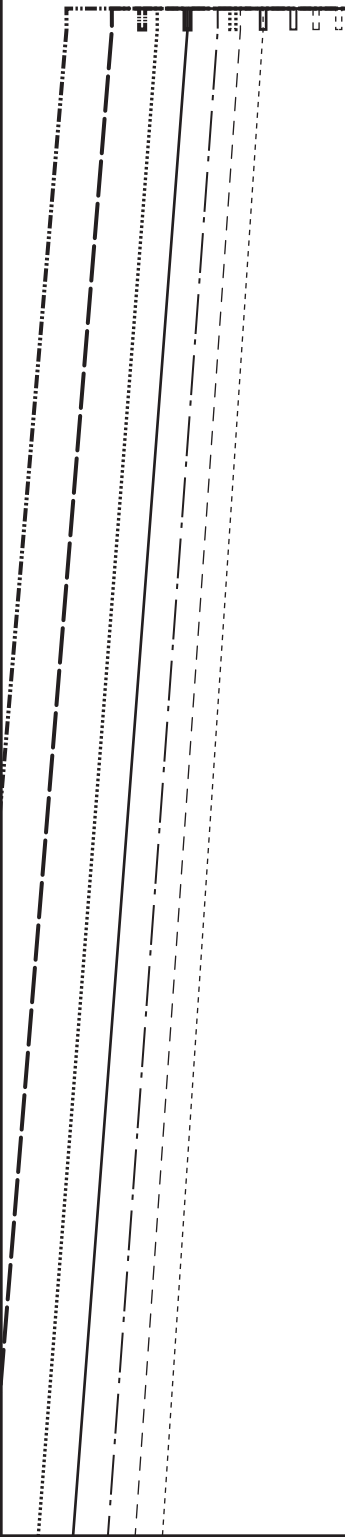
B3

C2

Hem allowance
3 cm

C3

C3

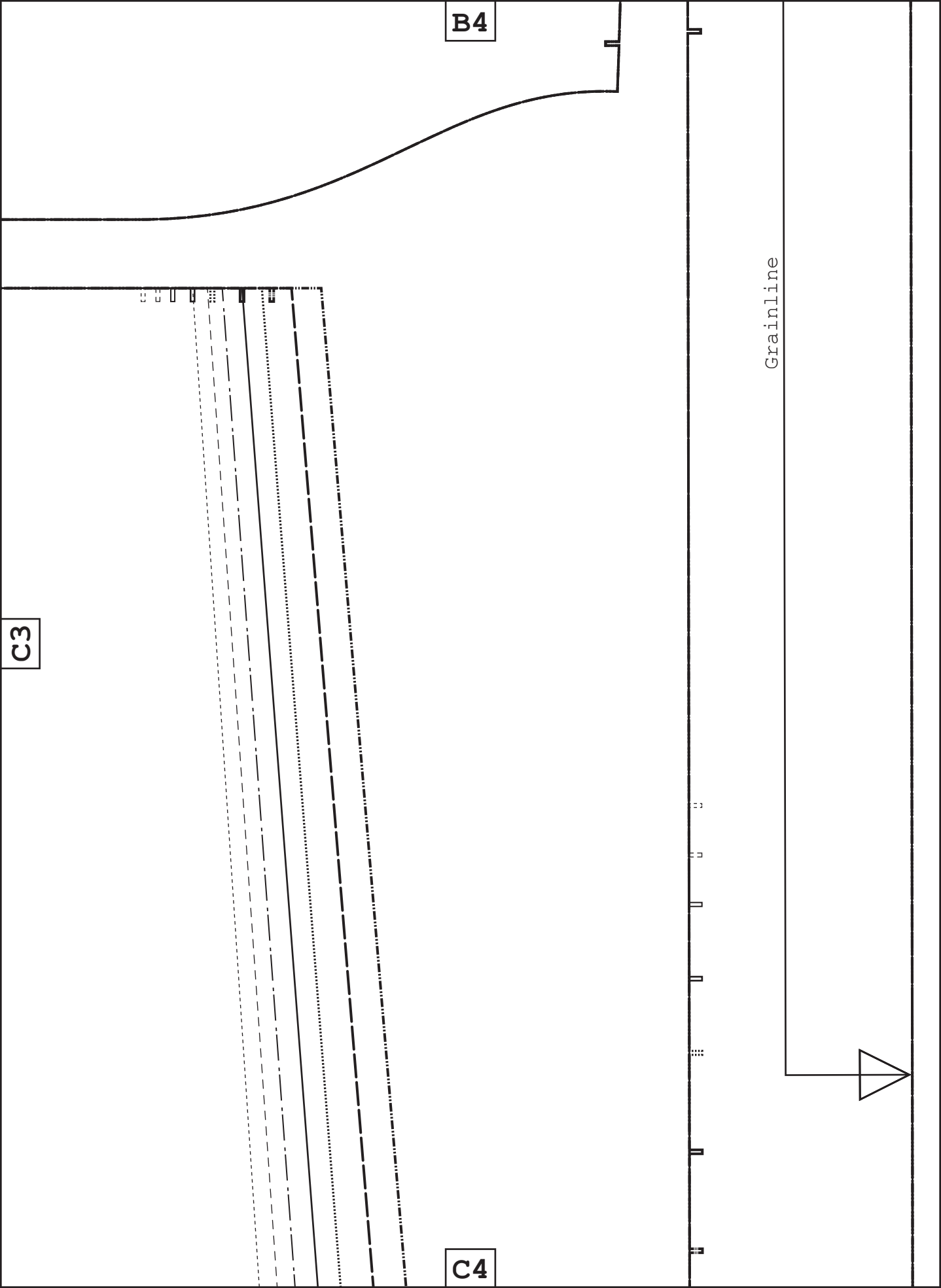


B4

C3

C4

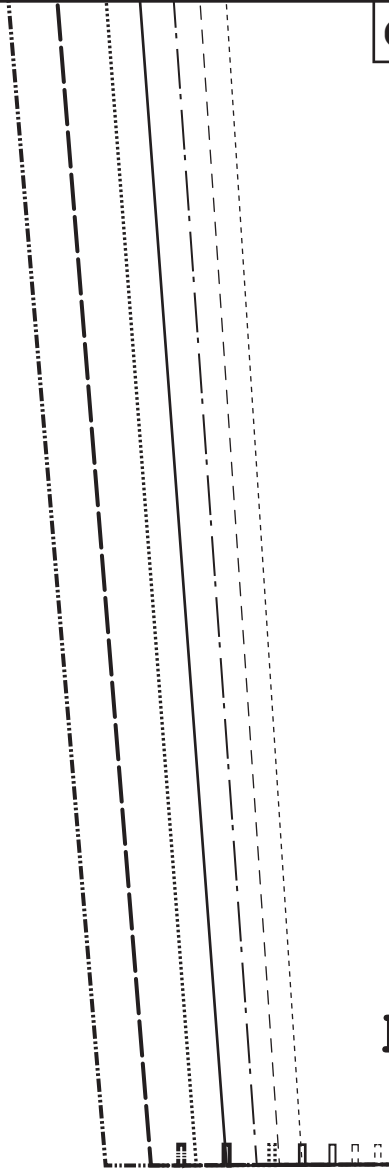
Grainline



C1

D1

Hem allowance
3 cm



D1

C2



mainline

unfetteredpatterns.wordpress.com

Model #UP1009

Sizes **XXS-XXL**

Pocket backing

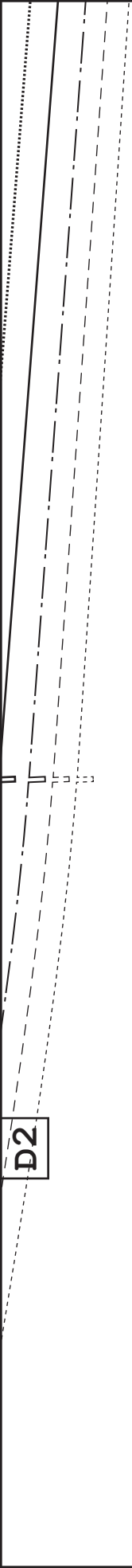
cut x2 fabric



D2

D2

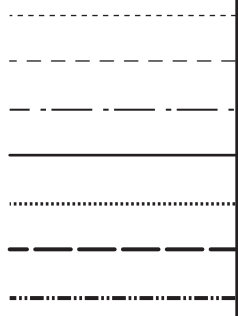
C3



D2

D3

Grainline



D3

A

C4

D3

D4

SIZE KE

SXX

SX

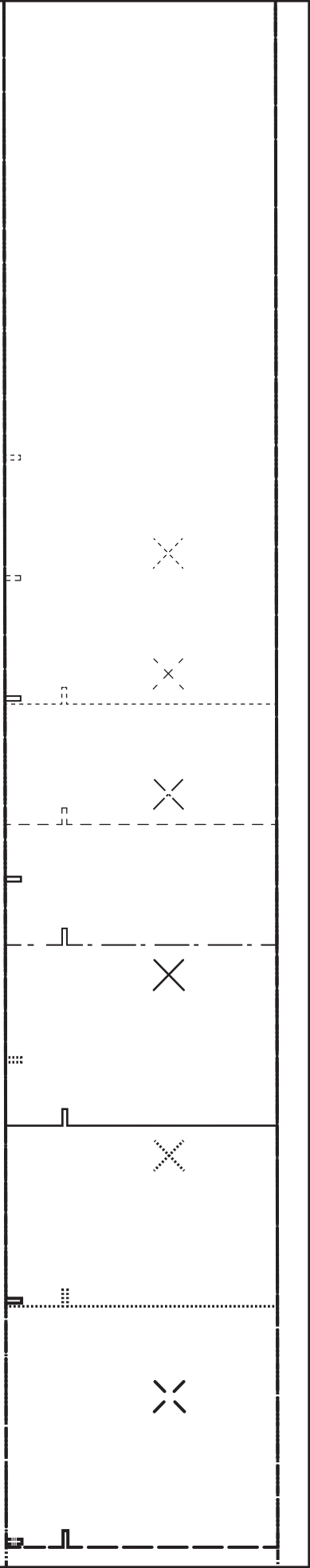
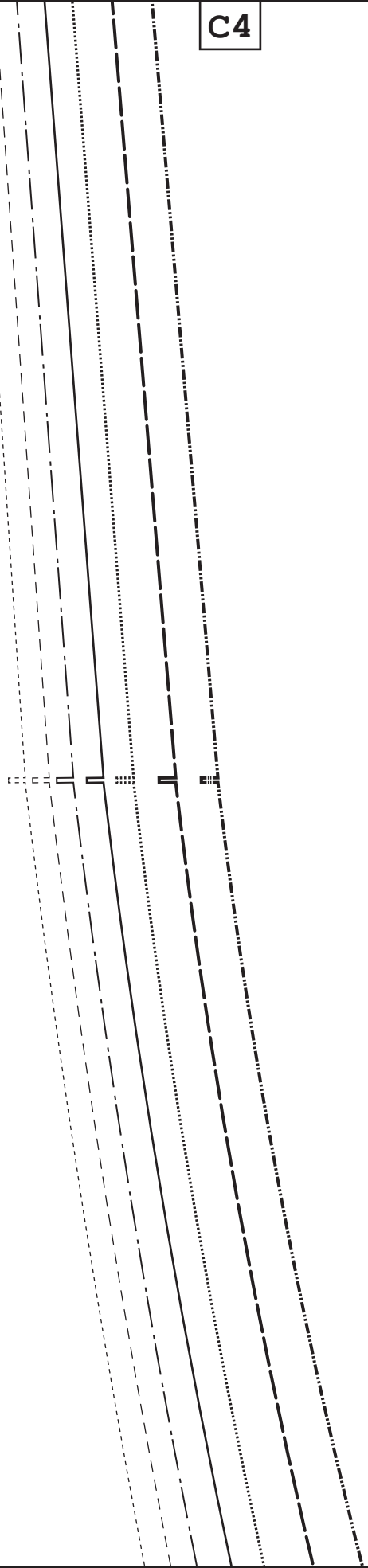
S

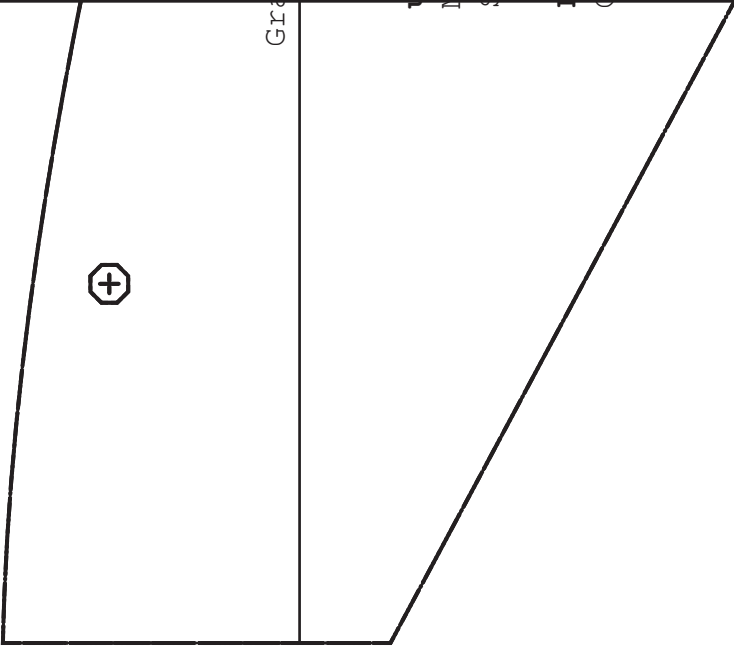
M

T

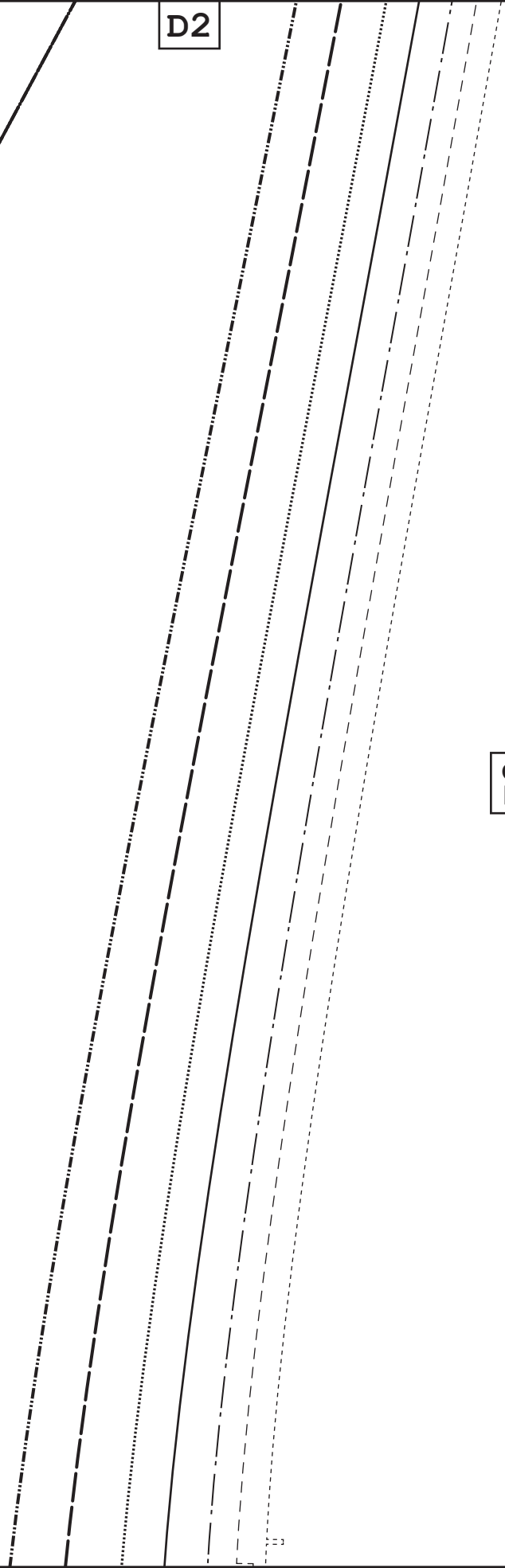
TX

XX





D2



E2

E2

D3

Cut x2 fabric

Back

Sizes **XXS-XXL**

Model #UP1009

unfetteredpatterns.wordpress.com

unfettered
—unfettered patterns—

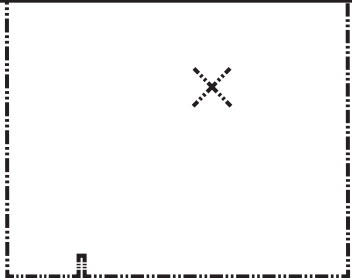


E3

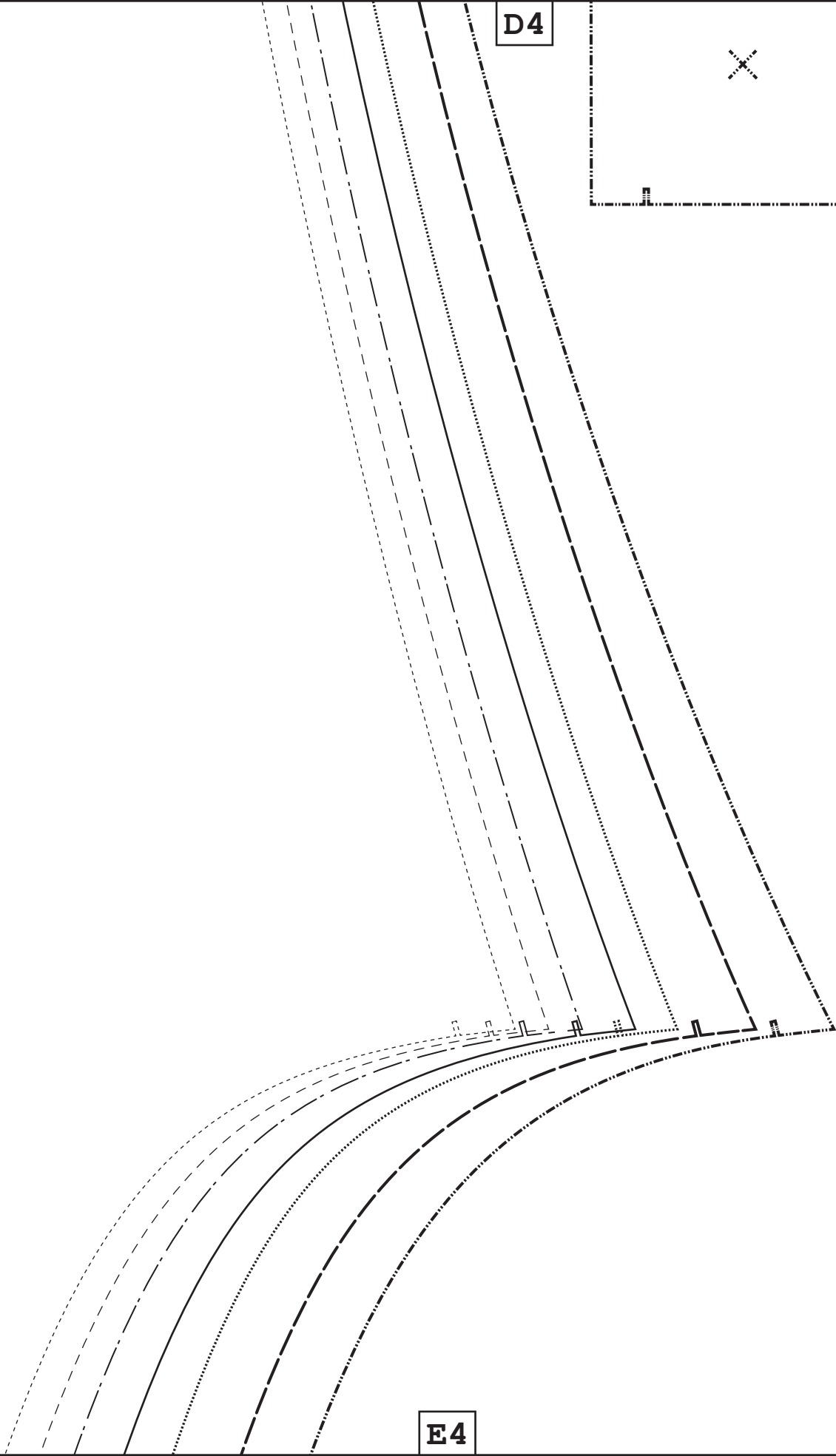
E3

E2

D4



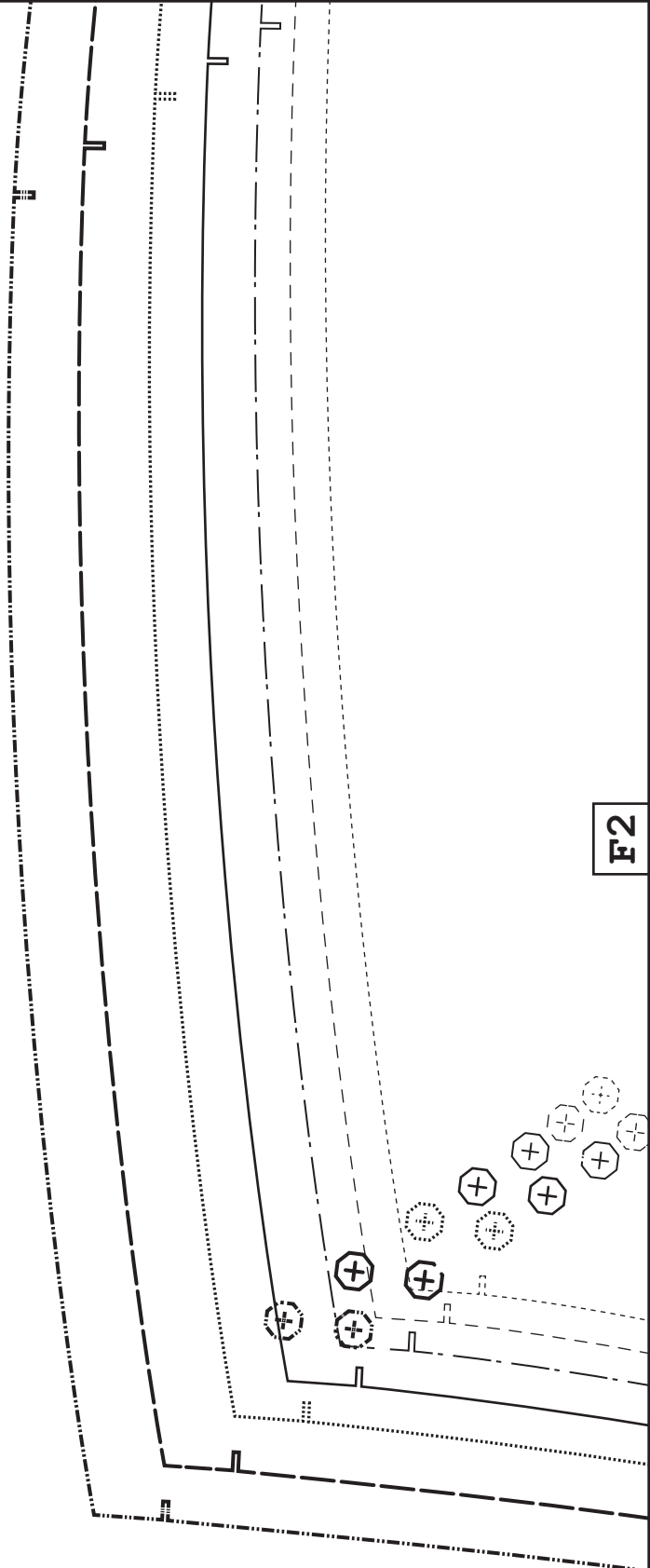
E3



E4

E2

F2

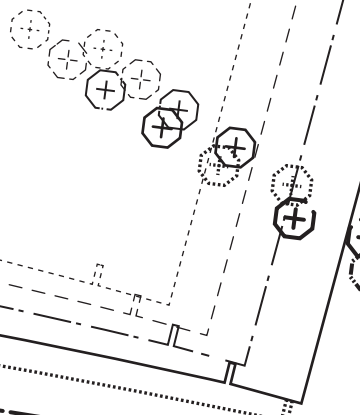


E3

F3



F2



E4

E3

